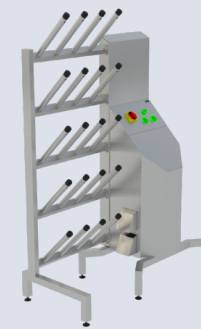
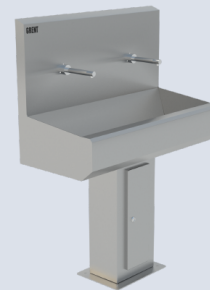
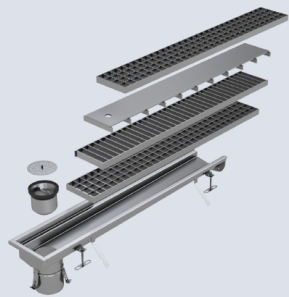


GRENT[®]



Hygiene Equipment
for Enterprises



GRENT.RU

About the company

GRENT LLC is not only a manufacturer of equipment and metal products, but also a team of professionals whose goal is to qualitatively produce and supply the branded product for the technical equipment of enterprises and the improvement of urban areas.

Many years of experience of the company's specialists guarantees our clients comfortable transaction support, and a high level of professionalism and skills allows us to fulfill a request of any complexity in the shortest possible time.

We work to make businesses more modern.

PRODUCTS:

Sanitary equipment for enterprises: hygiene stations, washbasins, clothes and boot washers;

Drainage systems: channels, gratings, floor drains and rodding eyes;

Neutral equipment: tables, racks, frames and containers;

Welded and pressed flooring.

ADVANTAGES:

15 YEARS ON THE MARKET: During this time we have accumulated extensive experience in this field and have proven as a reliable partner.

CORRECT PRICE: We do not impose expensive products. We match the client's needs.

WIDE SELECTION: A large assortment of products always allows the client to make a choice.

PROMPT AND PROFESSIONAL APPROACH: Our team consists of professional specialists who will promptly resolve your issues.



Own production and design bureau



Equipment warranty - 12 months



Prices are lower by up to 15% due to our own production



Production time from 3 days



Prompt pricing - within 24 hours

Contents

About the company 2
Boot hygiene stations 7
Hand hygiene stations 31
Full control hygiene stations 51
Hanging Wash Basins 75
Standing Wash Basins87
Boot Dryers 99
Diplomas and Certificates 114

GRENT internal drainage system

Description:

The GRENT internal drainage system is designed to collect and discharge liquids from the floor and surfaces inside the enterprise directly into the sewer, and is an integral part of enterprises' hygiene as a whole.

Our systems have a wide range of products: standard and slot channels, gratings, floor drains and rodding eyes.

It is also possible to manufacture products according to customer specifications.

The dimensions of channels are selected based on the volume of liquid collected and Customer's requirements. More detailed information can be obtained in a separate catalog or upon request from our specialists.

Design features:

Large size range

Drainage system with internal slope towards outlet

Welded and flanged connection (bolted connection through special rubber gasket)

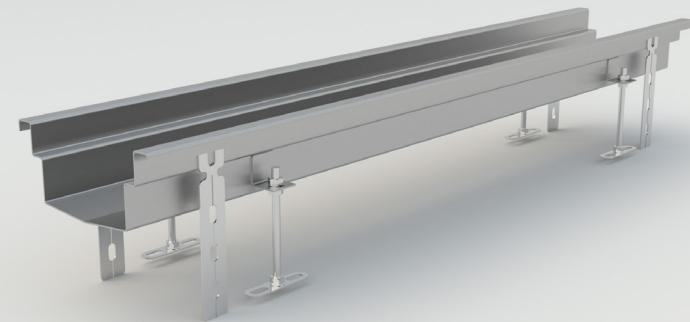
Additional reinforcement of the structure for loads is possible

Possibility of radius execution

Rotating elements are produced in the plant and shipped as ready-made elements

Embedded anchors and mounting feet are included

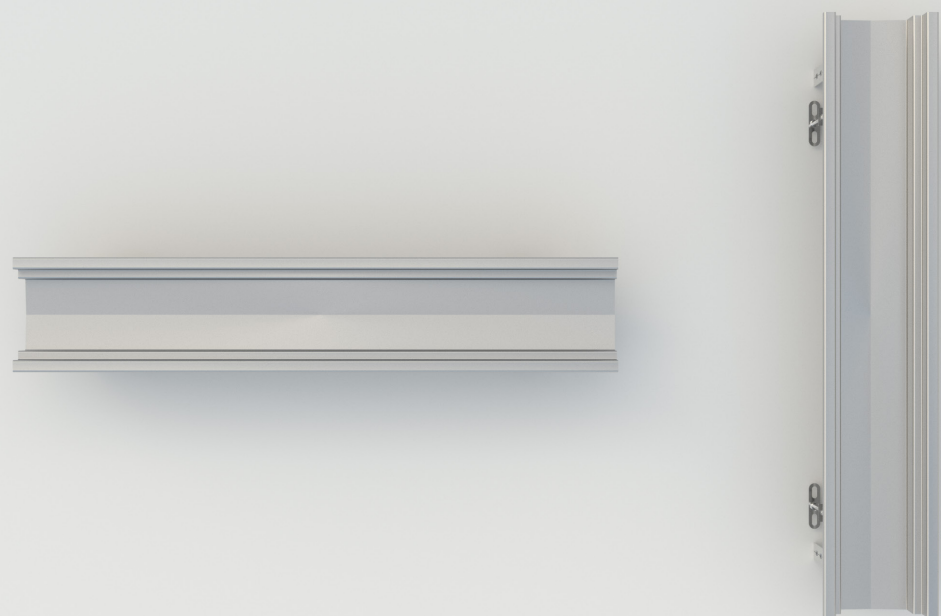
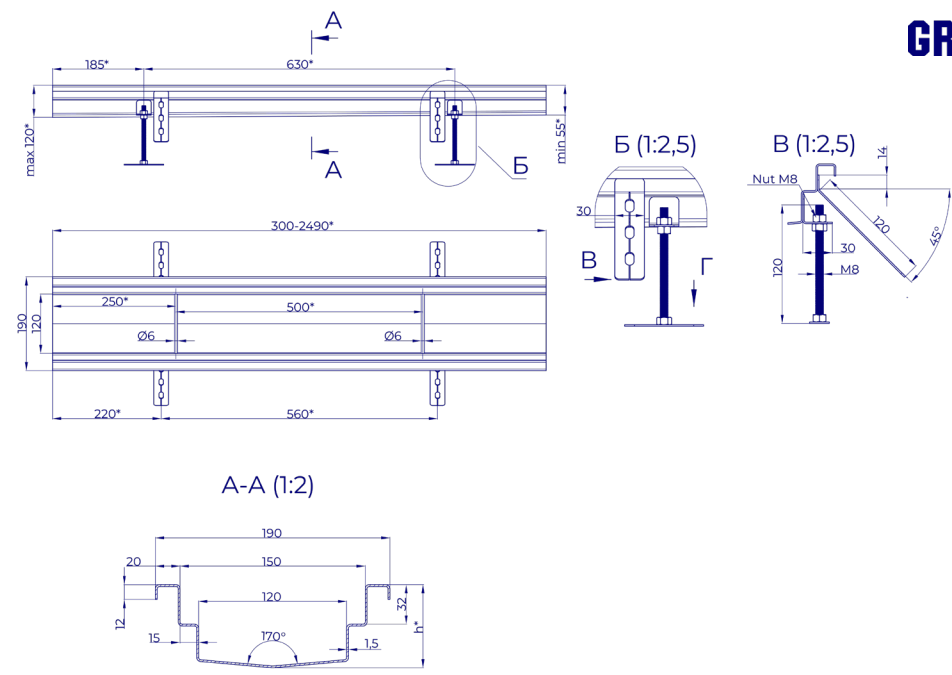
Manufacturing material: stainless steel AISI 304 (standard execution) / AISI 316 and other steel grades (as agreed)

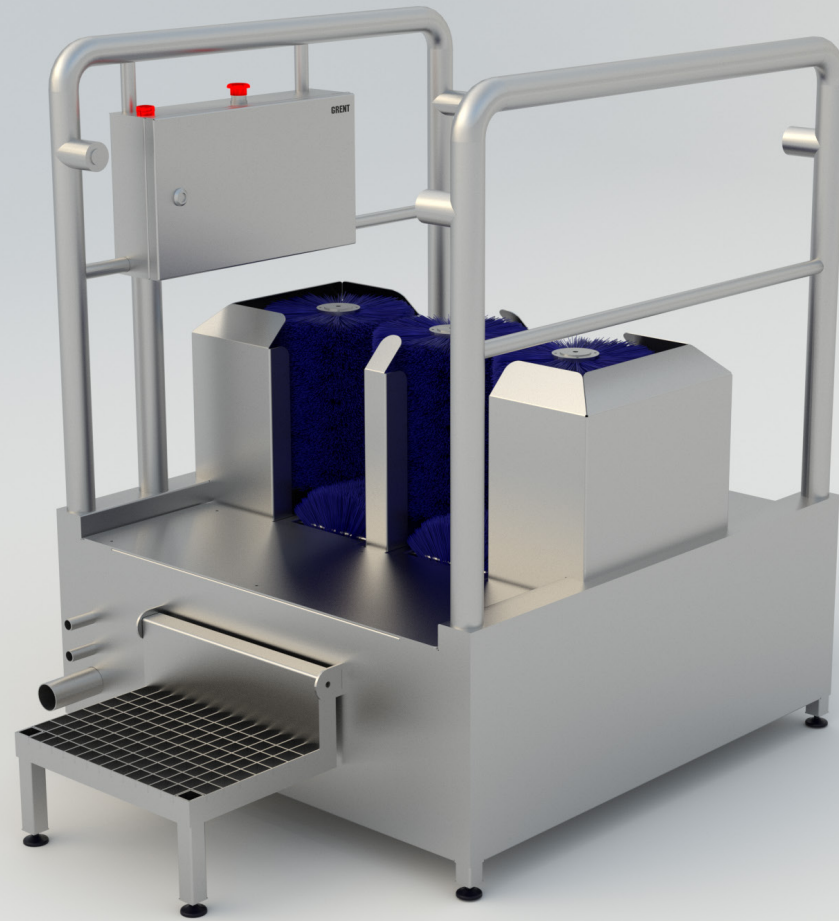


GRENT internal drainage system

Characteristics:

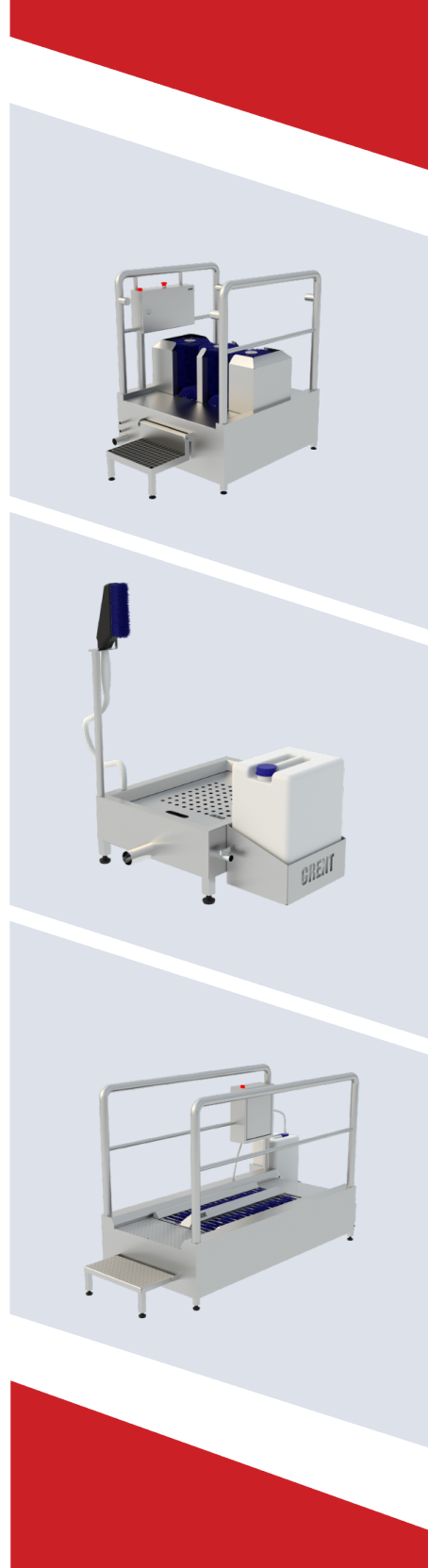
- Load class H1 – M125
- Length range, mm 500 – 2500
- Hydraulic width, mm 80-600
- External width, mm 150-690
- Height range, mm 45 – 500
- Standard steel thickness, mm 1,5-2
- Material AISI 304/ AISI 316





Boot hygiene stations

Boot hygiene station GRENT-001 N	8
Boot hygiene station GRENT-002 N	10
Boot hygiene station GRENT-002 N-M	12
Boot hygiene station GRENT-003 N	14
Boot hygiene station GRENT-004 N	16
Boot hygiene station GRENT-005 N	18
Boot hygiene station GRENT-006 N	20
Boot hygiene station GRENT-007 N	22
Boot hygiene station GRENT-008 N	24
Boot hygiene station GRENT-009 N	26
Boot hygiene station GRENT-010 N	28



Boot hygiene station GRENT-001 N

Description:

Boot hygiene station GRENT-001 N is designed to disinfect the soles of personnel boots before entering (exiting) a clean area

Design features:

Standard protection against dust and moisture according to IP54 classification, optional - IP65

The bathtub of the station is equipped with a drip-grate with an anti-slip surface to remove excess disinfectant

Adding of the disinfectant solution is done manually

The liquid level should be 1.5 - 2.5 mm above the grid level

Material - stainless steel AISI 304

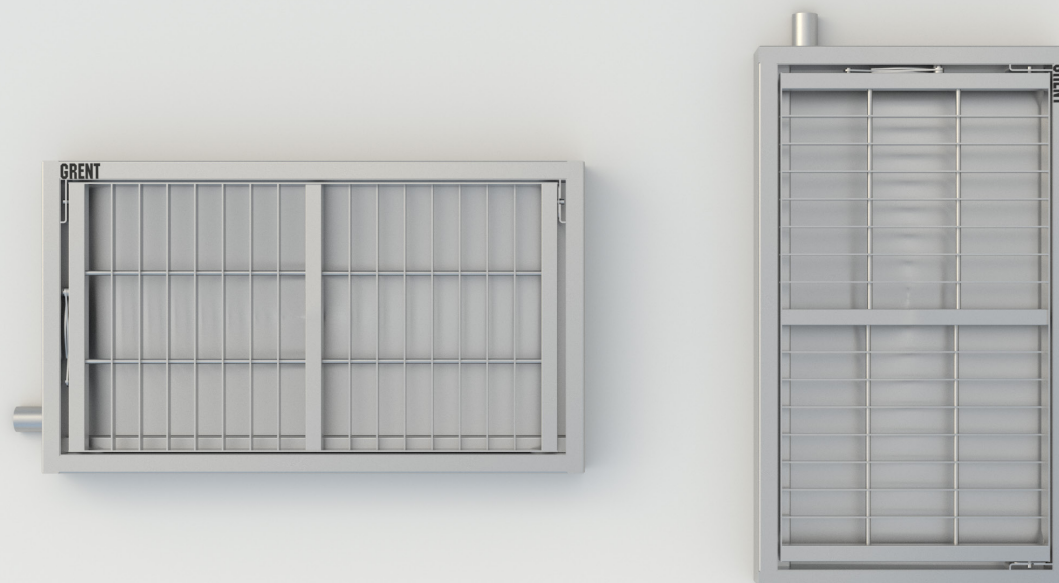
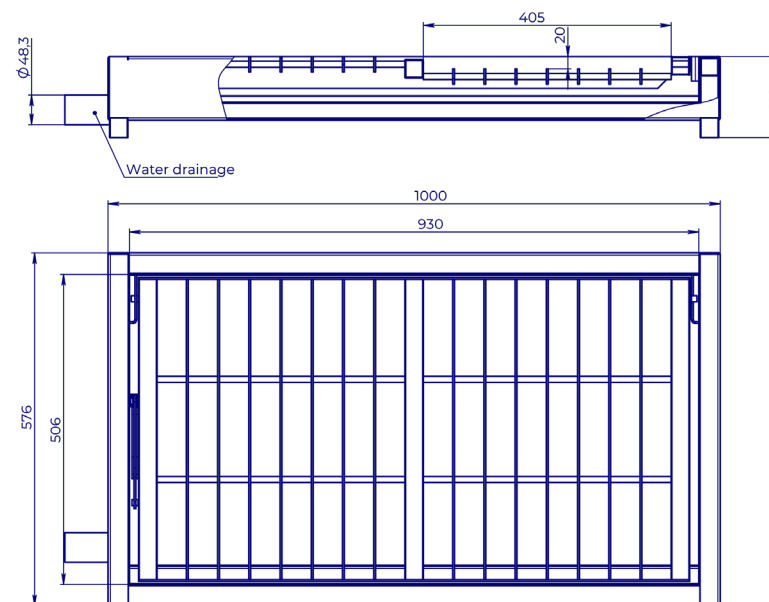
Discharge of used disinfectant – 50 mm



Boot hygiene station GRENT-001 N
Product ID: 1.8.1.01

Characteristics:

Weight, kg	35
Length, mm	1000
Width, mm	576
Height, mm.....	132
Material	AISI 304



Boot hygiene station GRENT-002 N

Description:

Boot hygiene station GRENT-002 N is designed to disinfect the soles of personnel boots before entering (exiting) a clean area

Design features:

Standard protection against dust and moisture according to IP54 classification, optional - IP65

The bathtub of the station is equipped with a drip-grate with an anti-slip surface to remove excess disinfectant

Adding of the disinfectant solution is done manually

The liquid level should be 1.5 - 2.5 mm above the grid level

Material - stainless steel AISI 304

Discharge of used disinfectant – 50 mm

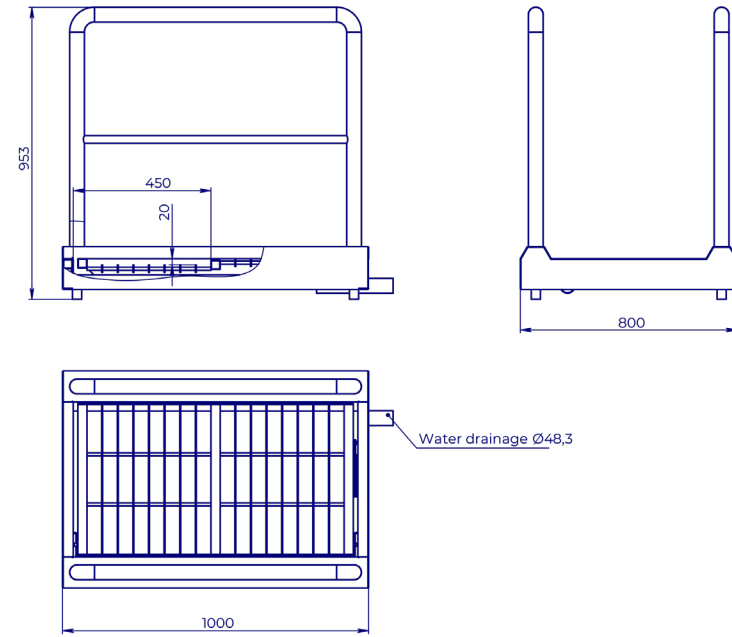


Boot hygiene station GRENT-002 N
Product ID: 1.8.1.02

Characteristics:

Weight, kg.....	50
Length, mm.....	1000
Width, mm.....	800
Height, mm.....	953
Material.....	AISI 304

GRENT



Scan and turn
ROUND



3D MODEL



Boot hygiene station GRENT-002 N-M

Description:

Boot hygiene station GRENT-002 N-M is designed to disinfect the soles of personnel boots before entering (exiting) a clean area

Design features:

Standard protection against dust and moisture according to IP54 classification, optional - IP65

The bathtub of the station is equipped with a drip-grate with an anti-slip surface to remove excess disinfectant

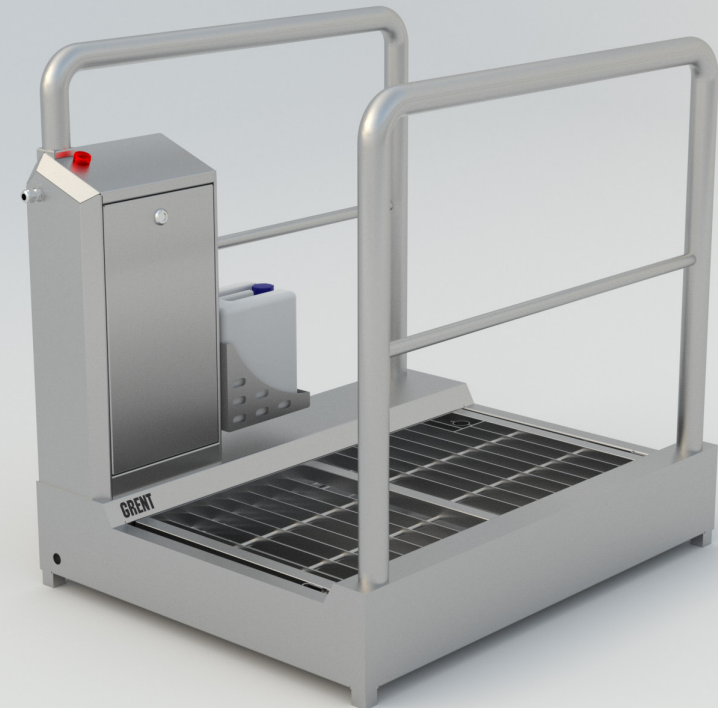
Automatic preparation of disinfectant solution in the bathtub

Adding of the disinfectant solution is performed automatically

Light indication of the end of the disinfectant solution in the canister

Material - stainless steel AISI 304

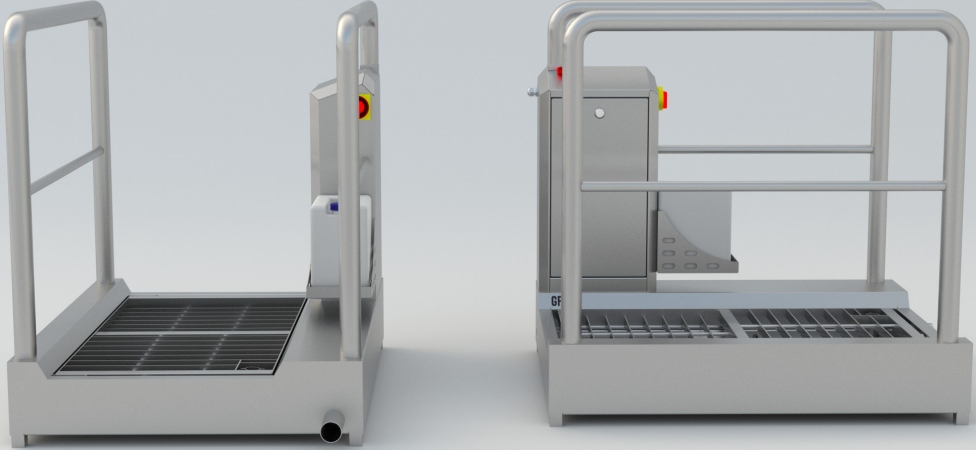
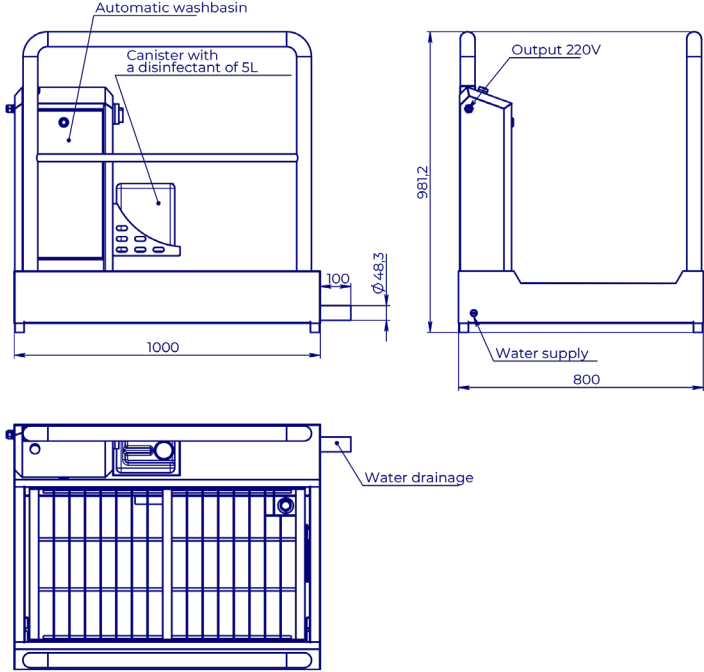
Discharge of used disinfectant – 50 mm



Boot hygiene station GRENT-002 N-M
Product ID: 1.8.1.02.1

Characteristics:

Weight, kg	67
Power consumption	kW 0,2
Mains voltage, V	220
Mains frequency, Hz	60
Connection to hot or cold water supply G	½
Length, mm	1000
Width, mm	800
Height, mm	981,2
Material	AISI 304



Boot hygiene station GRENT-003 N

Description:

Boot hygiene station GRENT-003 N is designed to disinfect the soles of personnel boots before entering (exiting) a clean area

Design features:

Standard protection against dust and moisture according to IP54 classification, optional - IP65

Automatic preparation of disinfectant solution

Manual boot brushing

Material - stainless steel AISI 304

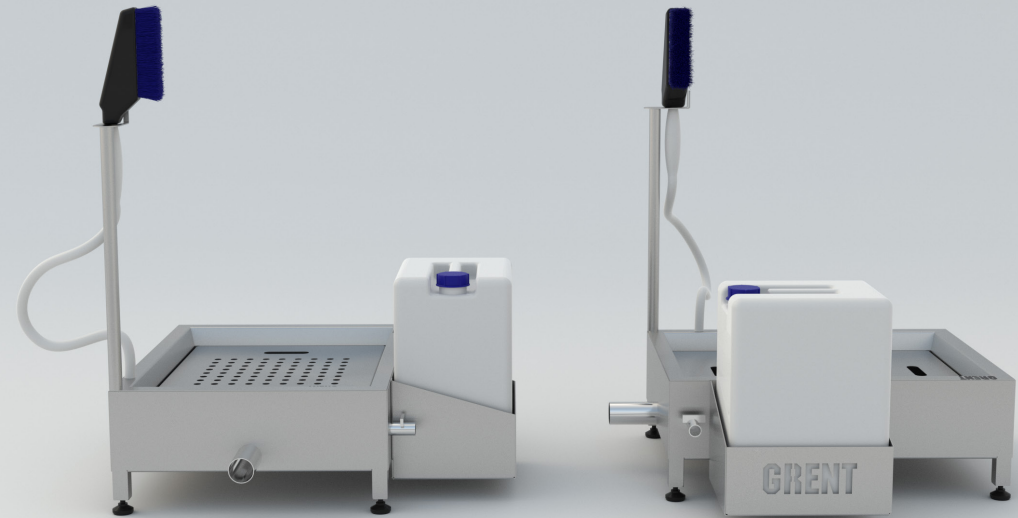
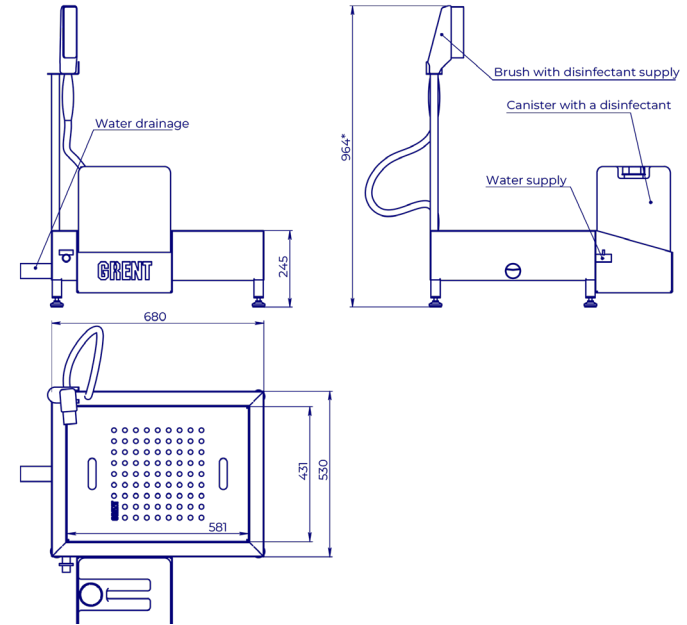
Discharge of used disinfectant – 50 mm



Boot hygiene station GRENT-003 N
Product ID: 1.8.1.03

Characteristics:

- Weight, kg 30
- Connection to hot or cold water supply G 1/2
- Length, mm 680
- Width, mm 530
- Height, mm 964
- Material AISI 304



Boot hygiene station GRENT-004 N

Description:

Boot hygiene station GRENT-004 N is designed to disinfect the soles of personnel boots before entering (exiting) a clean area

Design features:

Standard protection against dust and moisture according to IP54 classification, optional - IP65

Automatic preparation of disinfectant solution

Manual boot brushing

Brush for cleaning soles is activated by button

Material - stainless steel AISI 304

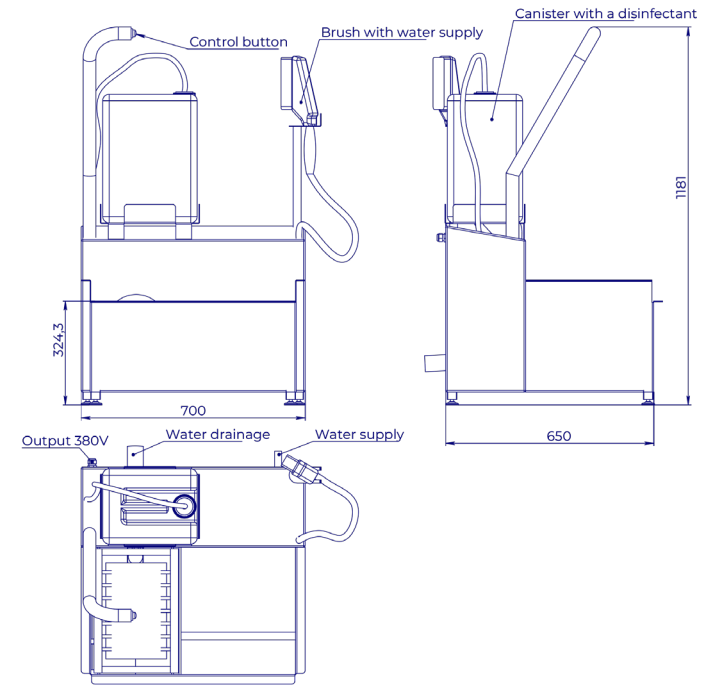
Discharge of used disinfectant – 50 mm



Boot hygiene station GRENT-004 N
Product ID: 1.8.1.04

Characteristics:

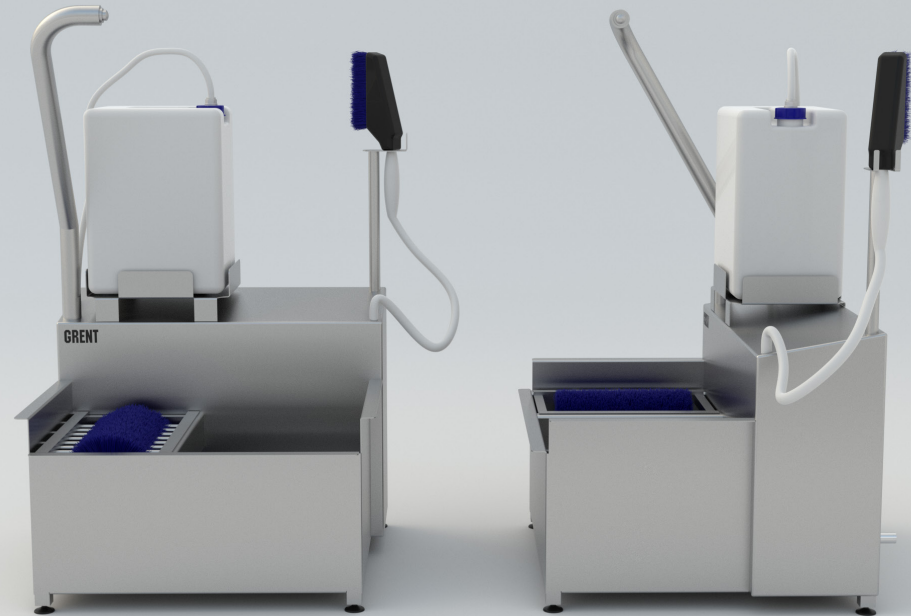
Weight, kg	55
Power consumption, kW	0,5
Mains voltage, V	220/380
Mains frequency, Hz	50
Connection to hot or cold water supply G	½
Length, mm	700
Width, mm	650
Height, mm	1181
Material	AISI 304



Scan and turn
ROUND



3D MODEL



Boot hygiene station GRENT-005 N

Description:

Boot hygiene station GRENT-005 N is designed to disinfect the soles of personnel boots before entering (exiting) a clean area

Design features:

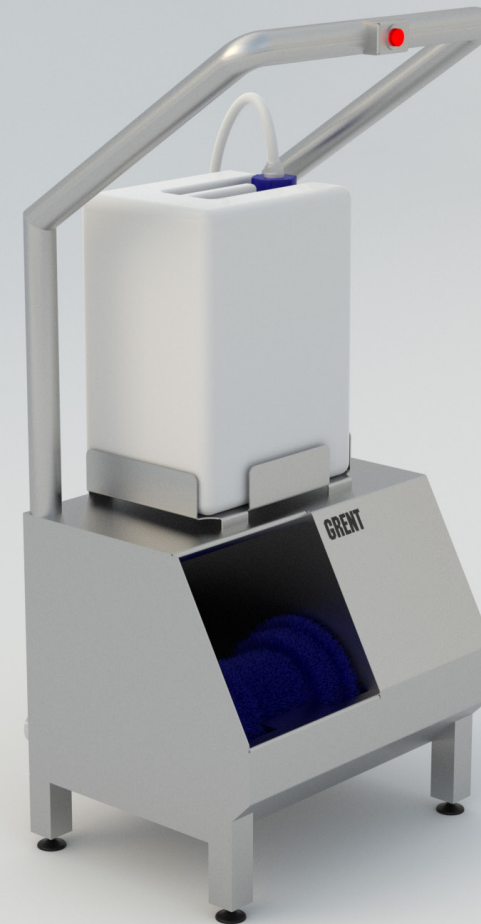
Standard protection against dust and moisture according to IP54 classification, optional - IP65

Automatic preparation of disinfectant solution

Brush for cleaning soles is activated by button

Material - stainless steel AISI 304

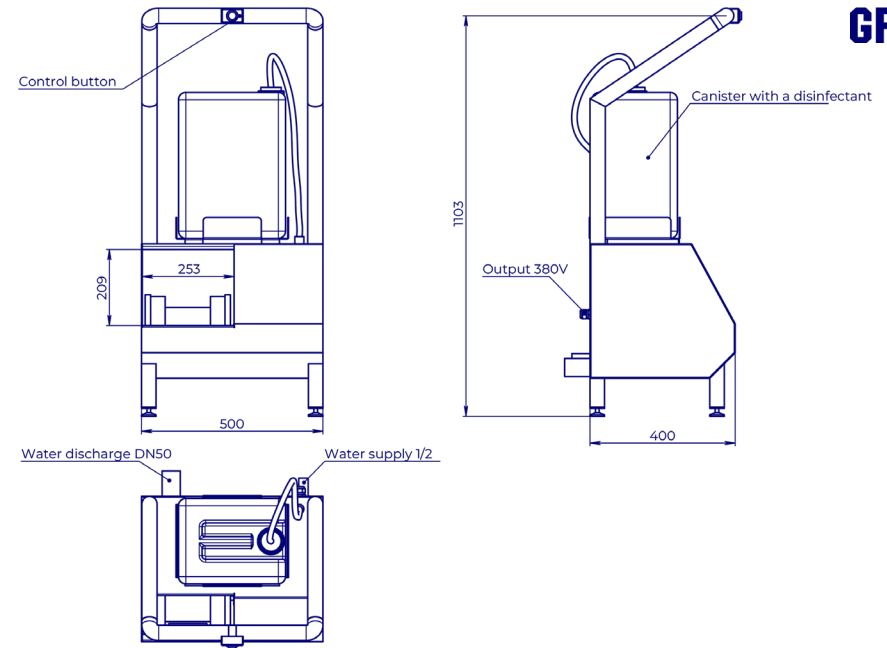
Discharge of used disinfectant – 50 mm



Boot hygiene station GRENT-005 N
Product ID: 1.8.1.05

Characteristics:

Weight, kg.....	40
Power consumption, kW.....	0,5
Mains voltage, V	220/380
Mains frequency, Hz	50
Connection to hot or cold water supply G	1/2
Length, mm	500
Width, mm	400
Height, mm	1103
Material	AISI 304



Scan and turn
ROUND



3D MODEL



Boot hygiene station GRENT-006 N

Description:

Boot hygiene station GRENT-006 N is designed to disinfect the soles of personnel boots before entering (exiting) a clean area

Design features:

Standard protection against dust and moisture according to IP54 classification, optional - IP65

Automatic preparation of disinfectant solution

Brush for cleaning soles is activated by button

Material - stainless steel AISI 304

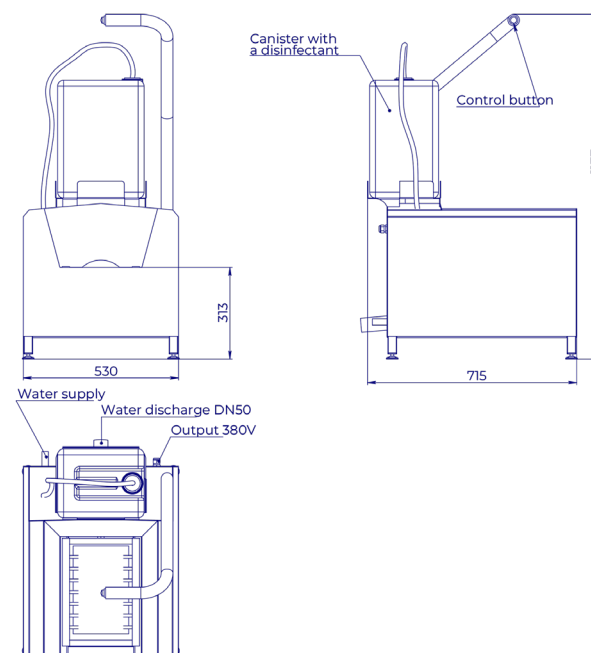
Discharge of used disinfectant – 50 mm



Boot hygiene station GRENT-006 N
Product ID: 1.8.1.06

Characteristics:

Weight, kg	52
Power consumption, kW	0,5
Mains voltage, V.....	220/380
Mains frequency, Hz	50
Connection to hot or cold water supply G	½
Length, mm	530
Width, mm	715
Height, mm	1177
Material	AISI 304



Scan and turn
ROUND



3D MODEL



Boot hygiene station GRENT-007 N

Description:

Boot hygiene station GRENT-007 N is designed to disinfect the soles of personnel boots before entering (exiting) a clean area

Design features:

Standard protection against dust and moisture according to IP54 classification, optional - IP65

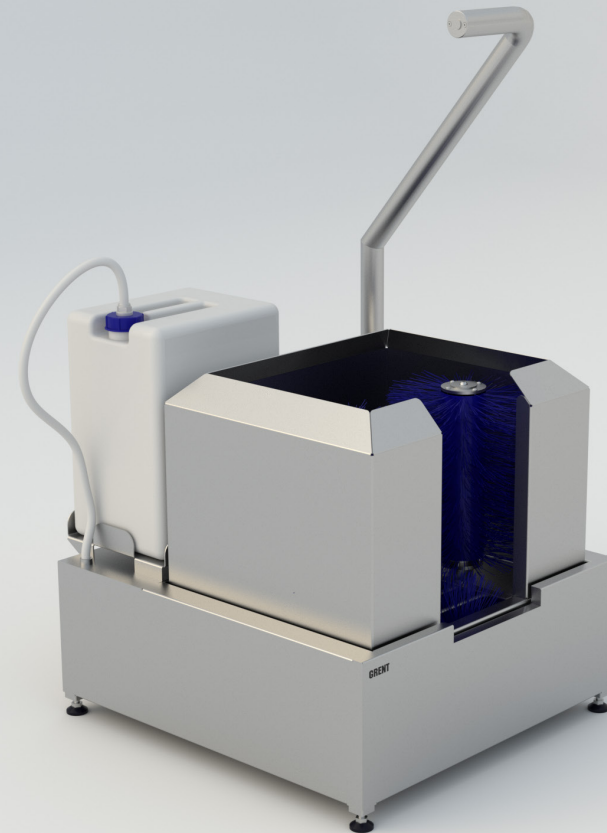
Automatic preparation of disinfectant solution

Sole brushes start automatically

Light indication of the end of the disinfectant solution in the canister

Material - stainless steel AISI 304

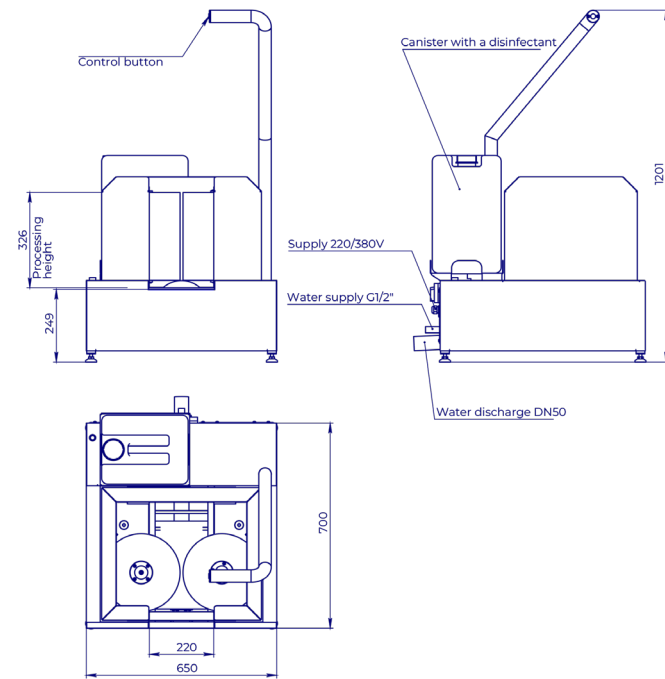
Discharge of used disinfectant – 50 mm



Boot hygiene station GRENT-007 N
Product ID: 1.8.1.07

Characteristics:

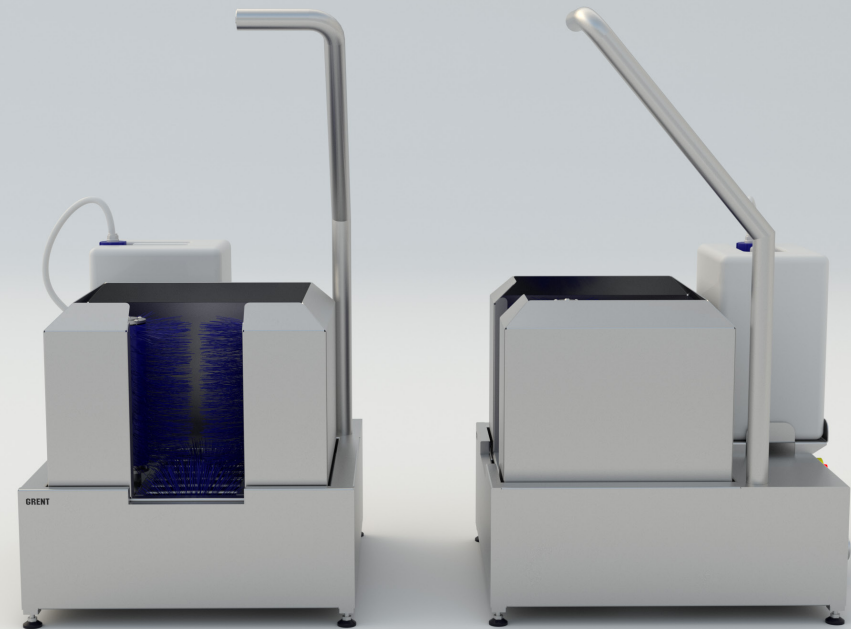
Weight, kg	65
Power consumption, kW	0,85
Mains voltage, V	220/380
Mains frequency, Hz	50
Connection to hot or cold water supply G	1/2
Length, mm	650
Width, mm	700
Height, mm	1201
Material	AISI 304



Scan and turn
ROUND



3D MODEL



Boot hygiene station GRENT-008 N

Description:

Boot hygiene station GRENT-008 N is designed to disinfect the soles of personnel boots before entering (exiting) a clean area

Design features:

Standard protection against dust and moisture according to IP54 classification, optional - IP65

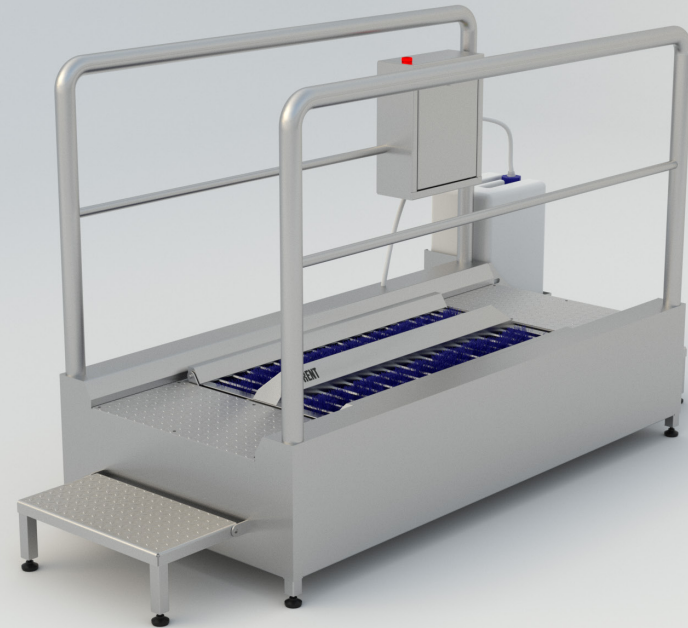
Automatic preparation of disinfectant solution

Sole and shin brushes start automatically

Light indication of the end of the disinfectant solution in the canister

Material - stainless steel AISI 304

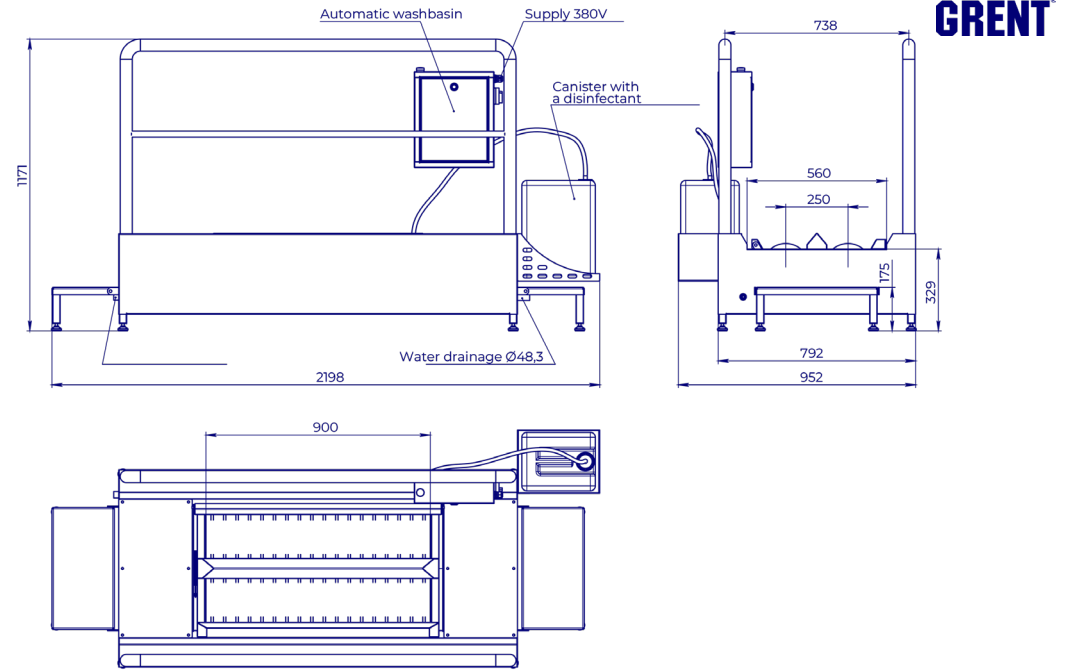
Discharge of used disinfectant – 50 mm



Boot hygiene station GRENT-008 N
Product ID: 1.8.1.08

Characteristics:

Flow rate, sec. per person	20
Weight, kg	40
Power consumption, kW	0,65
Mains voltage, V	220/380
Mains frequency, Hz	50
Connection to hot or cold water supply G	½
Height, mm	1157

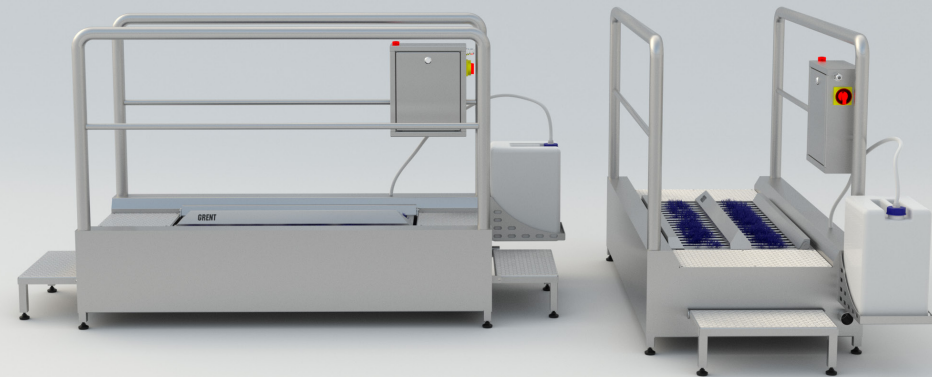


GRENT

Scan and turn
ROUND



3D MODEL



Boot hygiene station GRENT-009 N

Description:

Boot hygiene station GRENT-009 N is designed to disinfect the soles of personnel boots before entering (exiting) a clean area

Design features:

Standard protection against dust and moisture according to IP54 classification, optional - IP65

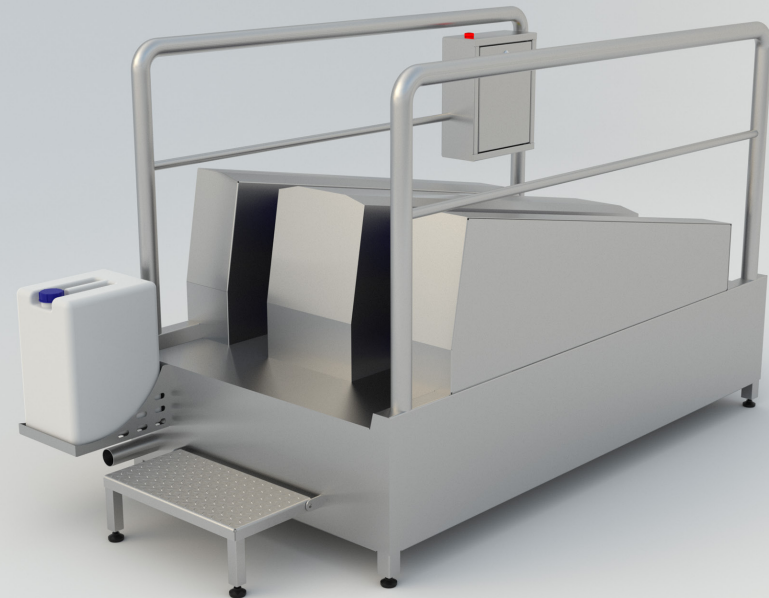
Automatic preparation of disinfectant solution

Sole and shin brushes start automatically

Light indication of the end of the disinfectant solution in the canister

Material - stainless steel AISI 304

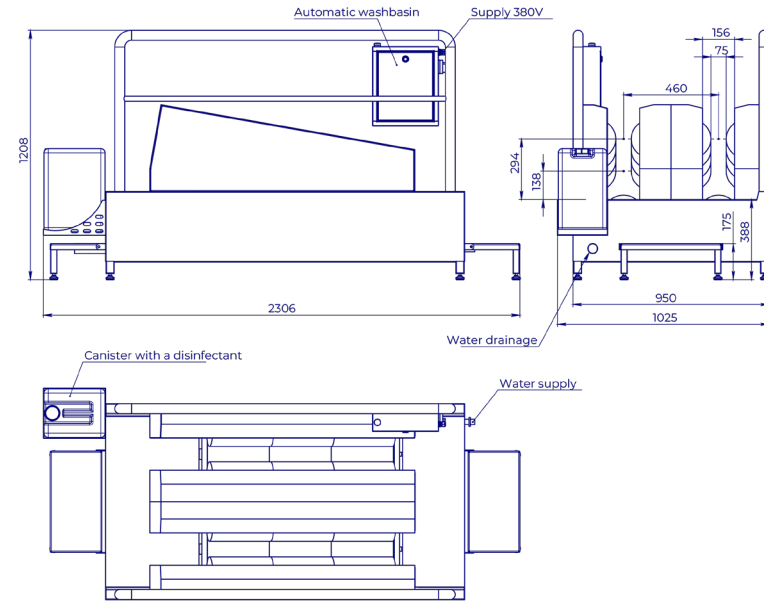
Discharge of used disinfectant – 50 mm



Boot hygiene station GRENT-009 N
Product ID: 1.8.1.09

Characteristics:

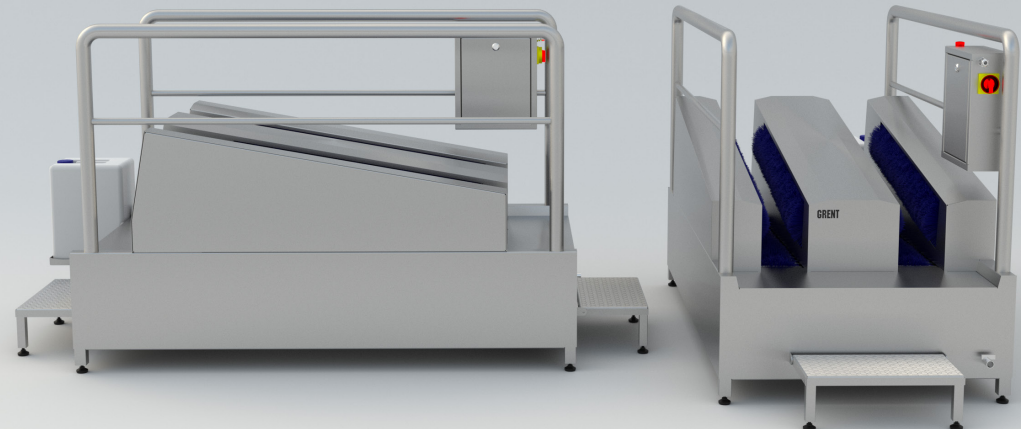
Flow rate, sec. per person	20
Weight, kg	330
Power consumption, kW	1,65
Mains voltage, V	220/380
Mains frequency, Hz	50
Connection to hot or cold water supply G	½
Length, mm	2306
Width, mm	1025
Height, mm	1208
Material	AISI 304



Scan and turn
ROUND



3D MODEL



Boot hygiene station GRENT-010 N

Description:

Boot hygiene station GRENT-010 N is designed to disinfect the soles of personnel boots before entering (exiting) a clean area

Design features:

Standard protection against dust and moisture according to IP54 classification, optional - IP65

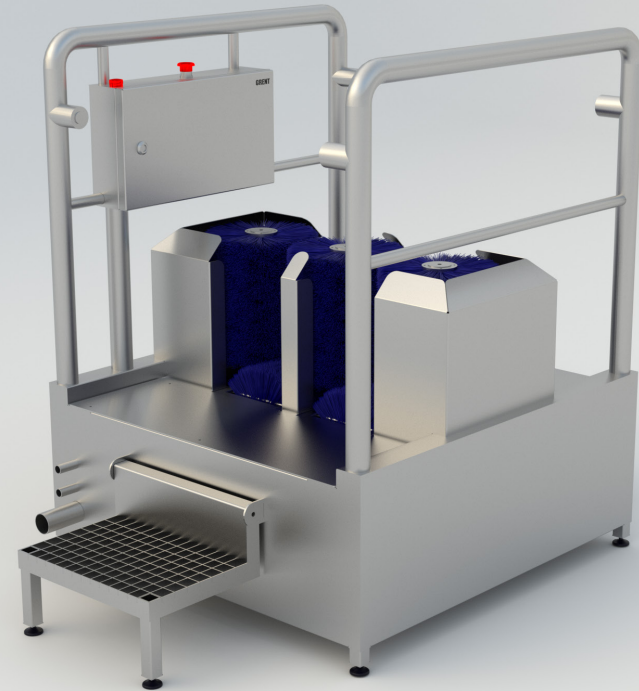
Automatic preparation of disinfectant solution

Sole and shin brushes start automatically

Light indication of the end of the disinfectant solution in the canister

Material - stainless steel AISI 304

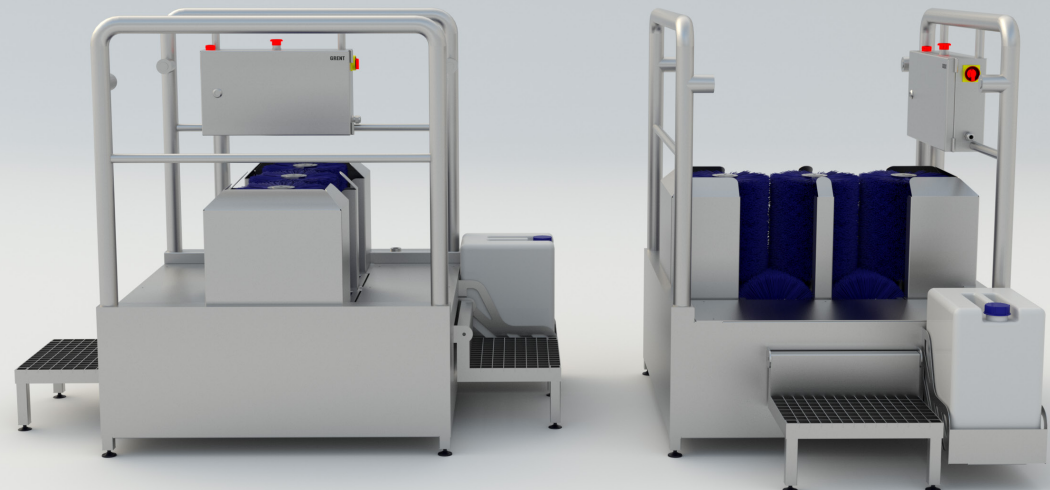
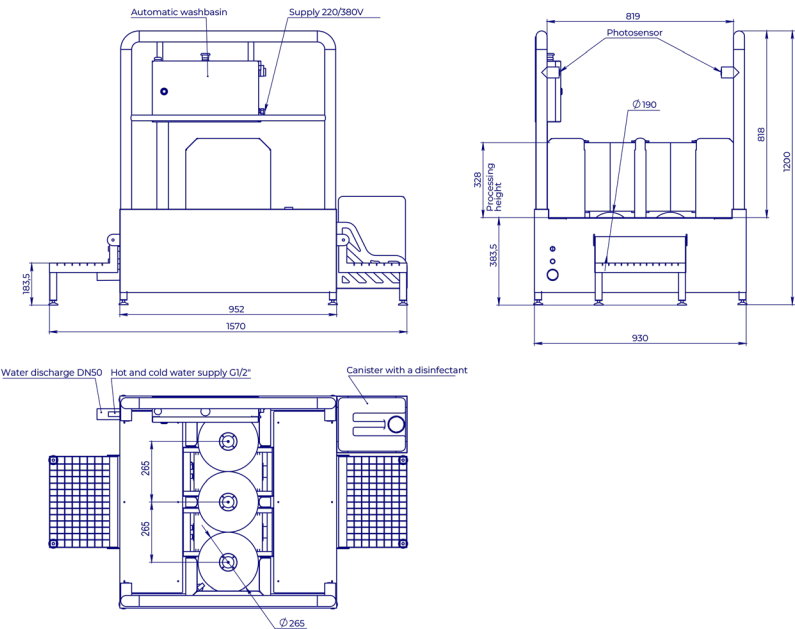
Discharge of used disinfectant – 50 mm



Boot hygiene station GRENT-010 N
Product ID: 1.8.1.10

Characteristics:

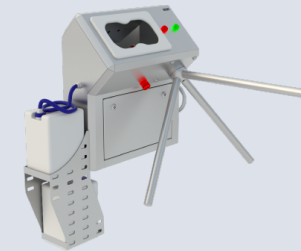
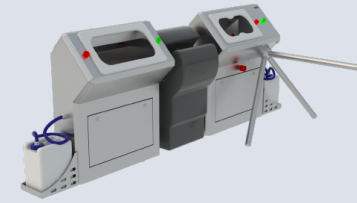
Flow rate, sec. per person	20
Weight, kg	175
Power consumption, kW	1,4
Mains voltage, V	220/380
Mains frequency, Hz	50
Connection to hot or cold water supply G	½
Length, mm	1570
Width, mm	930
Height, mm	1200
Material	AISI 304





Hand hygiene stations

Hand hygiene station GRENT-011 R	32
Hand hygiene station GRENT-012 R	34
Hand hygiene station GRENT-013 R	36
Hand hygiene station GRENT-014 R	38
Hand hygiene station GRENT-015 R	40
Hand hygiene station GRENT-016 R	42
Hand hygiene station GRENT-017 R	44
Hand hygiene station GRENT-018 R	46
Hand hygiene station GRENT-019 R	48



Hand hygiene station GRENT-011 R

Description:

Hand hygiene station GRENT-011 R is designed for automatic non-contact disinfection of personnel's hands before entering a clean area.

The supply of disinfectant is turned on when both hands are brought into the activation zone of the photocells located in the disinfection chamber.

The disinfectant is supplied automatically using an electric pump. The disinfectant is sprayed by 4 nozzles located in the upper and lower parts of the disinfection chamber, which ensures that hands are treated on both sides.

Design features:

Standard protection against dust and moisture according to IP54 classification, optional - IP65

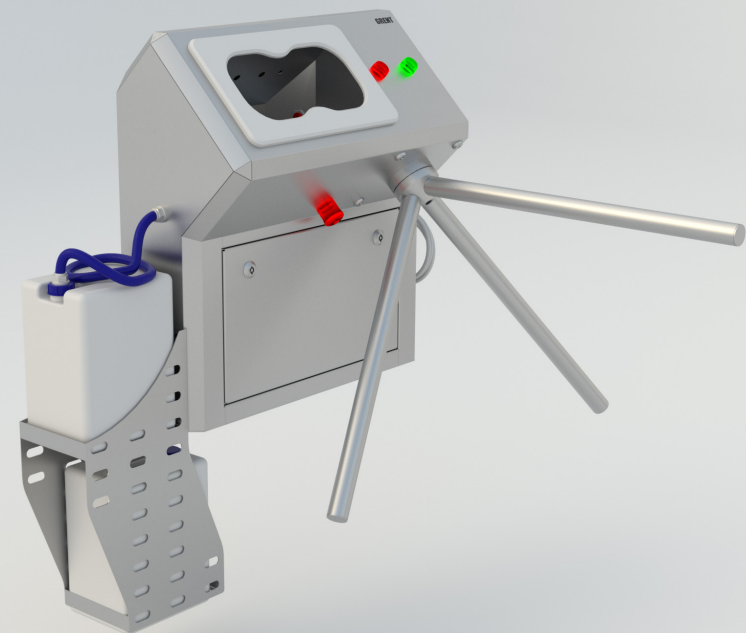
Wall version

Light indication of the end of the disinfectant solution in the canister

A turnstile of our own design, the mechanism of which is entirely made of stainless steel. With manual and automatic shut-off system (if the station is connected to the fire alarm system)

Fine-tuning the operation of the system, the ability to independently adjust the volume of liquid supply and other parameters depending on the configuration of the station

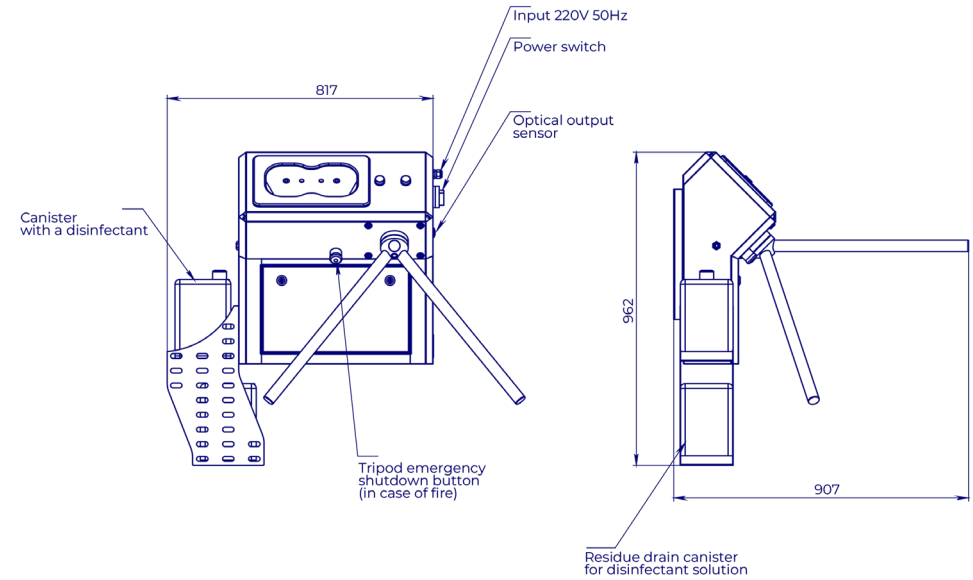
Material - stainless steel AISI 304



Hand hygiene station GRENT-011 R
Product ID: 1.8.1.11

Characteristics:

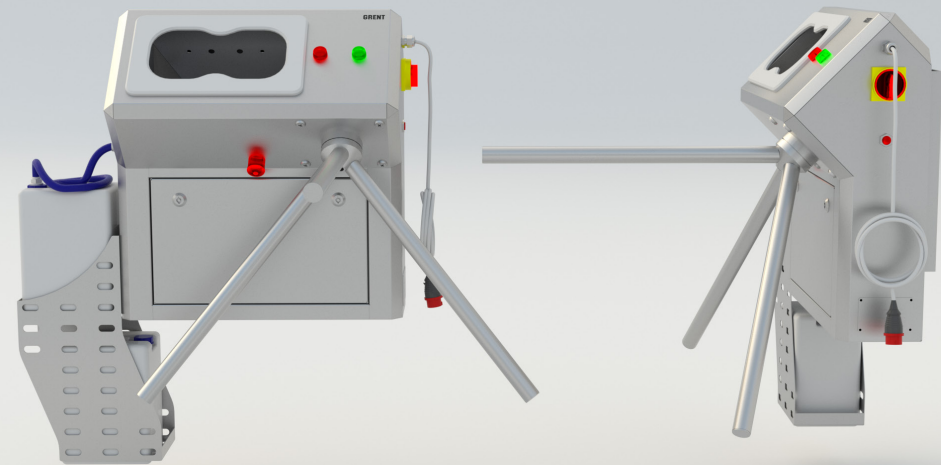
Weight, kg	47
Power consumption, kW	0,2
Mains voltage, V	220
Mains frequency, Hz	50
Length, mm	817
Width, mm	313,6
Height, mm	962
Width with turnstile, mm	907
Material	AISI 304



Scan and turn
ROUND



3D MODEL



Hand hygiene station GRENT-012 R

Description:

Hand hygiene station GRENT-012 R is designed for automatic non-contact disinfection of personnel's hands before entering a clean area.

The supply of disinfectant is turned on when both hands are brought into the activation zone of the photocells located in the disinfection chamber.

The disinfectant is supplied automatically using an electric pump. The disinfectant is sprayed by 4 nozzles located in the upper and lower parts of the disinfection chamber, which ensures that hands are treated on both sides.

Design features:

Standard protection against dust and moisture according to IP54 classification, optional - IP65

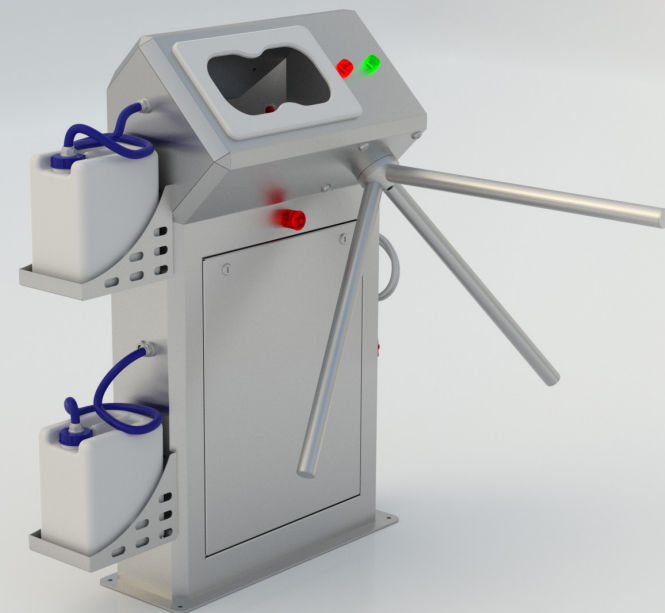
Floor-standing version

Light indication of the end of the disinfectant solution in the canister

A turnstile of our own design, the mechanism of which is entirely made of stainless steel. With manual and automatic shut-off system (if the station is connected to the fire alarm system)

Fine-tuning the operation of the system, the ability to independently adjust the volume of liquid supply and other parameters depending on the configuration of the station

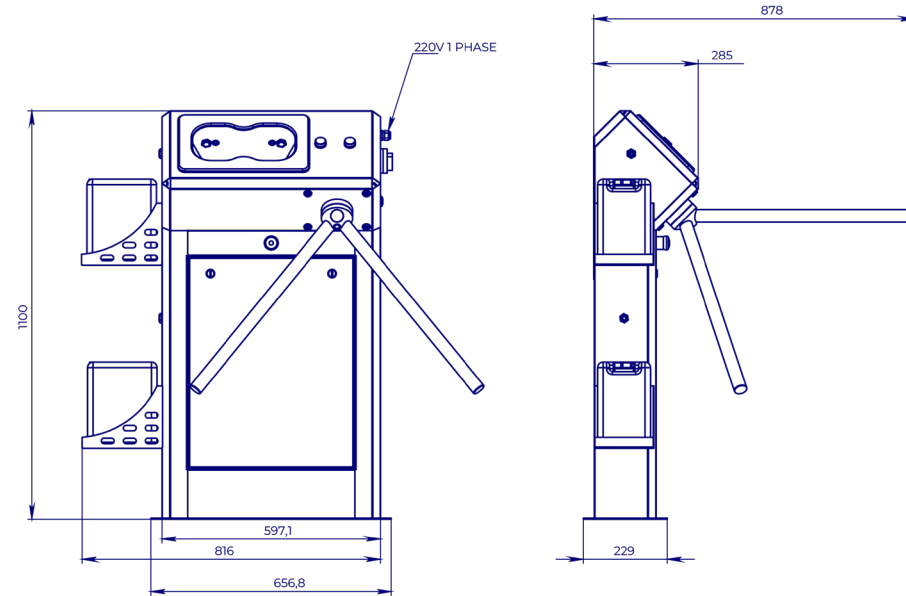
Material - stainless steel AISI 304



Hand hygiene station GRENT-012 R
Product ID: 1.8.1.12

Characteristics:

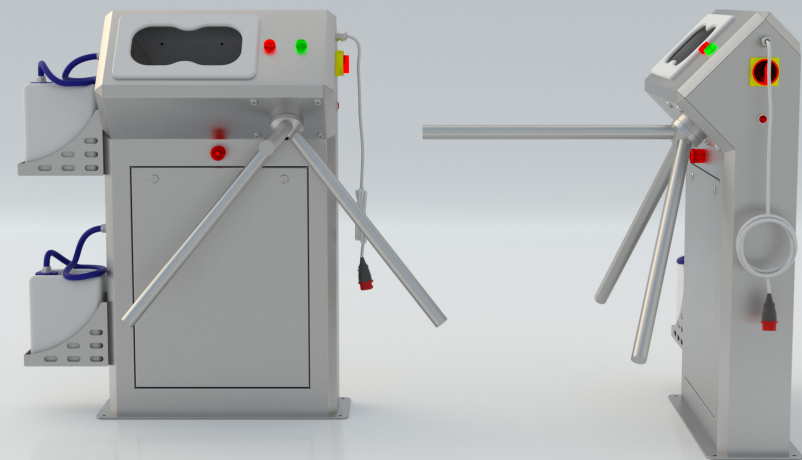
Weight, kg	67
Power consumption, kW	0,2
Mains voltage, V	220
Mains frequency, Hz	50
Length, mm	817
Width, mm	284
Width with turnstile, mm	906
Height, mm	1054
Material	AISI 304



Scan and turn
ROUND



3D MODEL



Hand hygiene station GRENT-013 R

Description:

Hand hygiene station GRENT-013 R is designed for automatic non-contact supply of soap with subsequent supply of water to personnel before approaching the disinfection unit.

The soap supply is turned on when you bring your hands to the trigger zone of the first photocell located in the chamber. Liquid soap is supplied automatically using an electric pump. Soap is supplied by one nozzle located in the upper part of the chamber.

Then, when you raise your hands, the water supply is triggered, after which the turnstile opens.

Design features:

Standard protection against dust and moisture according to IP54 classification, optional - IP65

Floor-standing version

Light indication of the end of soap in the canister

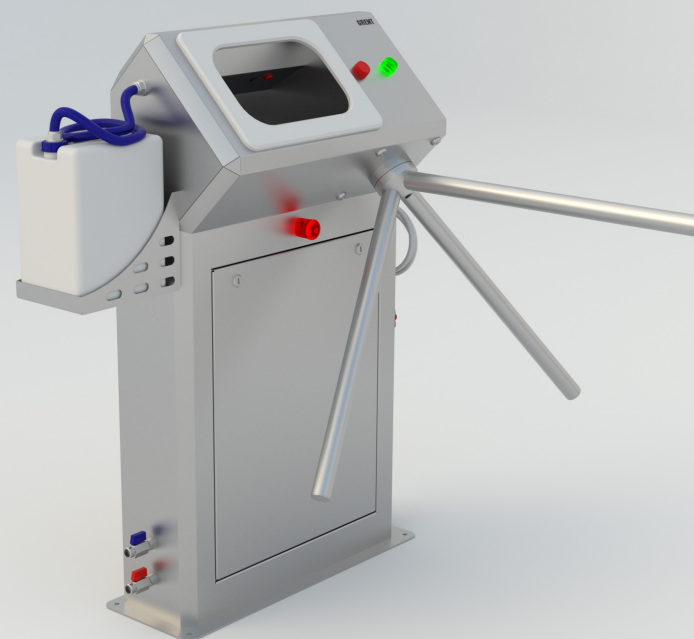
A turnstile of our own design, the mechanism of which is completely made of stainless steel. With manual and automatic shut-off system (if the station is connected to the fire alarm system)

Fine-tuning the operation of the system, the ability to independently adjust the volume of soap supply, water temperature and other parameters depending on the station configuration

Material - stainless steel AISI 304

Hot and cold water supply

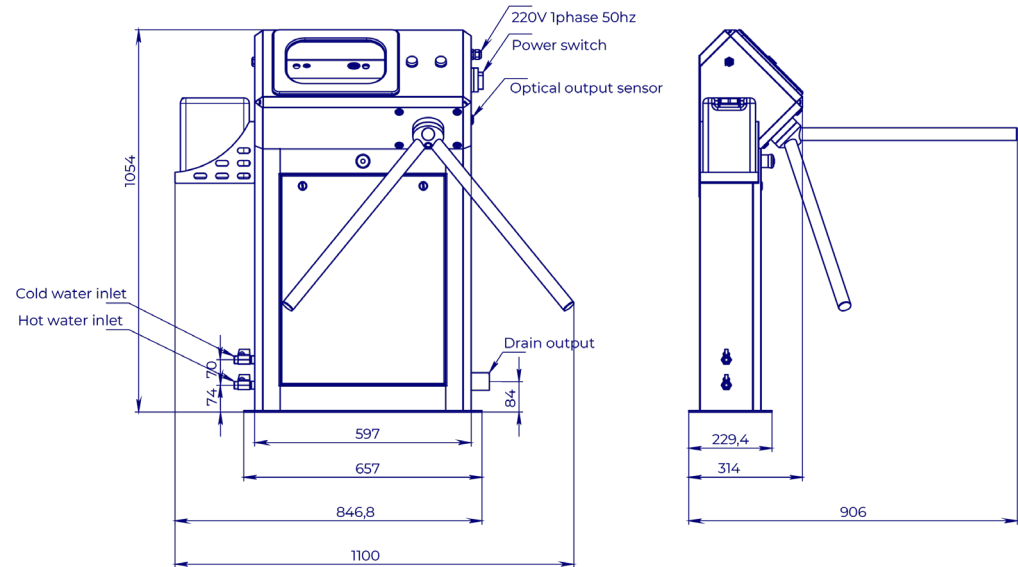
Sewer drain, mm 50



Hand hygiene station GRENT-013 R
Product ID: 1.8.1.13

Characteristics:

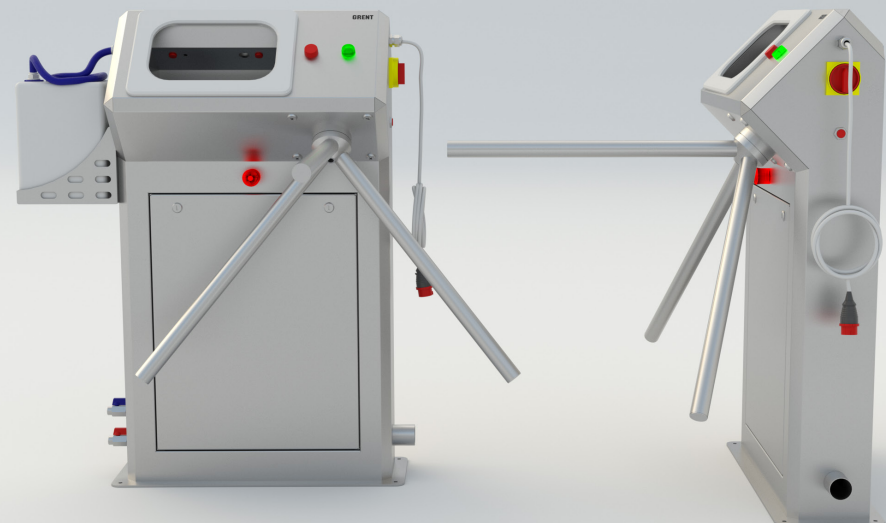
Weight, kg	69
Power consumption, kW	0,25
Mains voltage, V	220
Mains frequency, Hz	50
Connection to hot and cold water supply G	½
Length, mm	1100
Width, mm	314
Width with turnstile, mm	906
Height, mm	1054
Material	AISI 304



Scan and turn
ROUND



3D MODEL



Hand hygiene station GRENT-014 R

Description:

Hand hygiene station GRENT-014 R is designed for washing and disinfecting hands when entering clean areas in production.

Design features:

Standard protection against dust and moisture according to IP54 classification, optional - IP65

Modern ergonomic design

Floor-standing version

Fine-tuning of the system operation, the ability to independently adjust the water temperature, supply volume of liquid, soap and other parameters depending on the station configuration

A turnstile of our own design, the mechanism of which is completely made of stainless steel. With manual and automatic shut-off system (if the station is connected to the fire alarm system)

Voice notification system. Voice notification of employees to speed up passage and notify about emergency situations, such as running out of soap or liquid, turning off the turnstile, etc.

The cloud control system will allow you to remotely configure station parameters and obtain station usage statistics

Possibility of integration with any access control systems

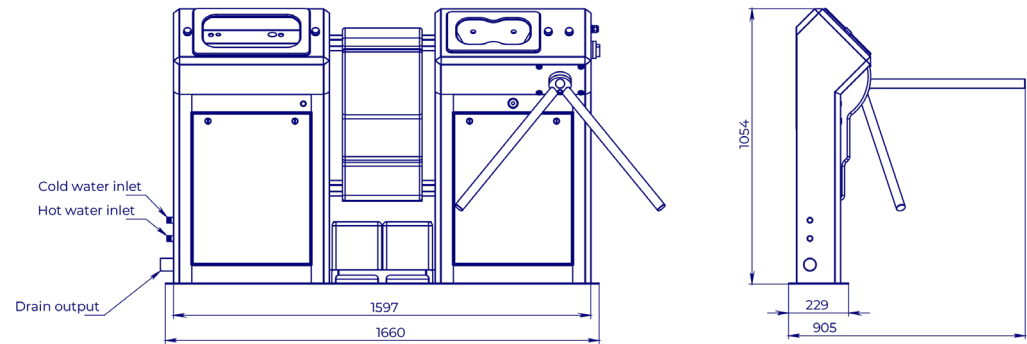
1 year factory warranty



Hand hygiene station GRENT-014 R
Product ID: 1.8.1.14

Characteristics:

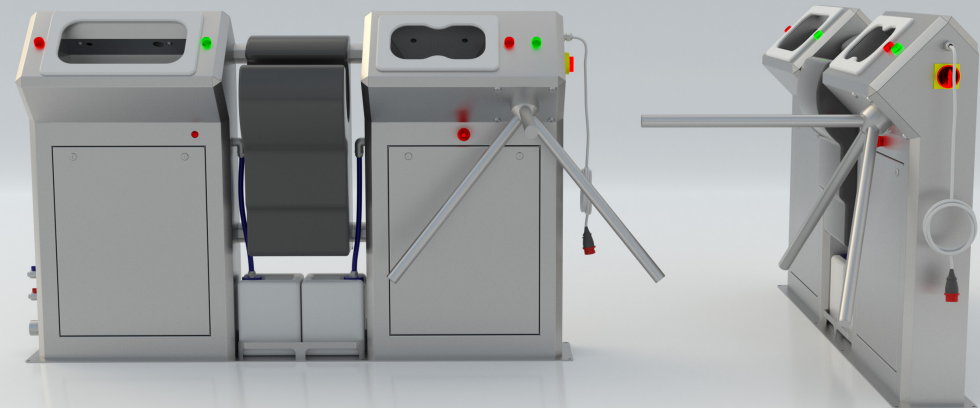
Weight, kg	109
Power consumption, kW	1,7
Mains voltage, V	220
Mains frequency, Hz	50
Connection to hot and cold water supply G	½
Length, mm	1660
Width, mm	229
Width with turnstile, mm	905
Height, mm	1054
Material	AISI 304



Scan and turn
ROUND



3D MODEL



Hand hygiene station GRENT-015 R

Description:

Hand hygiene station GRENT-015 R is designed for automatic non-contact disinfection of personnel's hands before entering a clean area.

The supply of disinfectant is turned on when both hands are brought into the activation zone of the photocells located in the disinfection chamber.

The disinfectant is supplied automatically using an electric pump. The disinfectant is sprayed by 4 nozzles located in the upper and lower parts of the disinfection chamber, which ensures that hands are treated on both sides.

Design features:

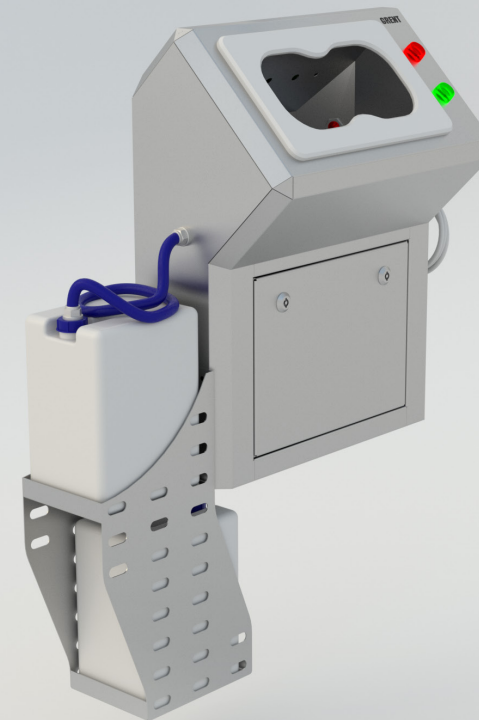
Standard protection against dust and moisture according to IP54 classification, optional - IP65

Suspended version

Light indication of the end of the disinfectant solution in the canister

Fine-tuning the operation of the system, the ability to independently adjust the volume of liquid supply and other parameters depending on the configuration of the station

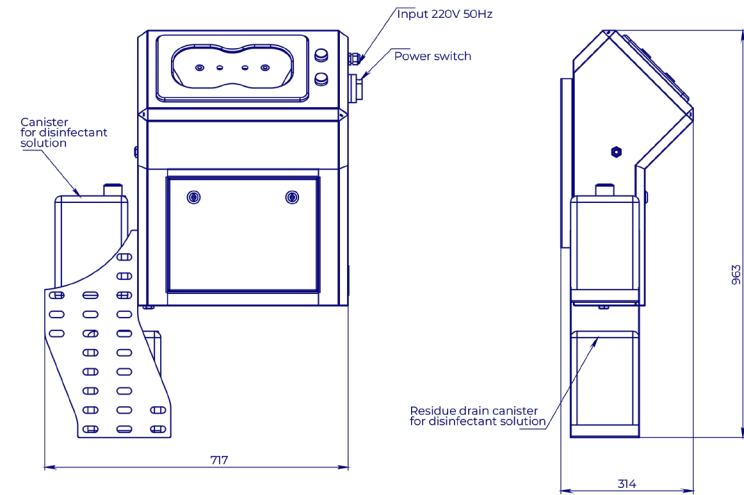
Material - stainless steel AISI 304



Hand hygiene station GRENT-015 R
Product ID: 1.8.1.15

Characteristics:

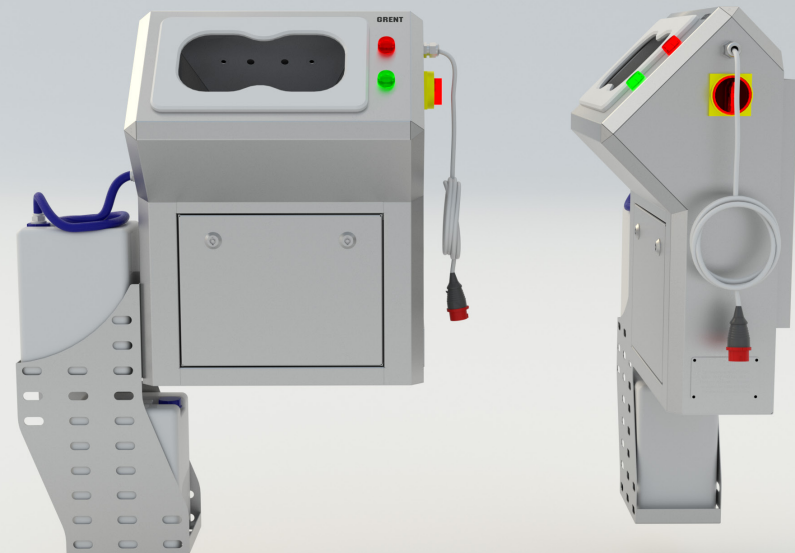
Weight, kg	25
Power consumption, kW	0,1
Mains voltage, V	220
Mains frequency, Hz	50
Length, mm	717
Width, mm	314
Height, mm	963
Material	AISI 304



Scan and turn
ROUND



3D MODEL



Hand hygiene station GRENT-016 R

Description:

Hand hygiene station GRENT-016 R is designed for automatic contactless supply of soap to personnel before approaching the washbasin.

The soap supply is turned on when both hands are brought into the activation zone of the photocells located in the chamber. Liquid soap is supplied automatically using an electric pump. Soap is supplied by 2 nozzles located in the upper part of the chamber.

Design features:

Standard protection against dust and moisture according to IP54 classification, optional - IP65

Floor-standing version

Light indication of the end of soap in the canister

A turnstile of our own design, the mechanism of which is completely made of stainless steel. With manual and automatic shut-off system (if the station is connected to the fire alarm system)

Fine-tuning the operation of the system, the ability to independently adjust the volume of soap supply and other parameters depending on the configuration of the station.

Additional canister for collecting excess soap

Material - stainless steel AISI 304

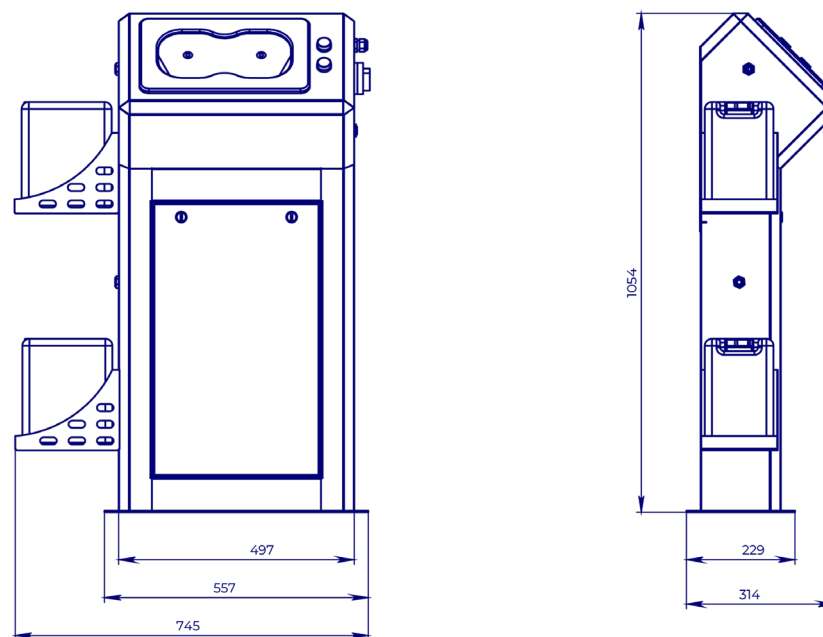


Hand hygiene station GRENT-016 R
Product ID: 1.8.1.16

Characteristics:

Weight, kg	49
Power consumption, kW	0,1
Mains voltage, V	220
Mains frequency, Hz	50
Length, mm	745
Width, mm	314
Height, mm	1054
Material	AISI 304

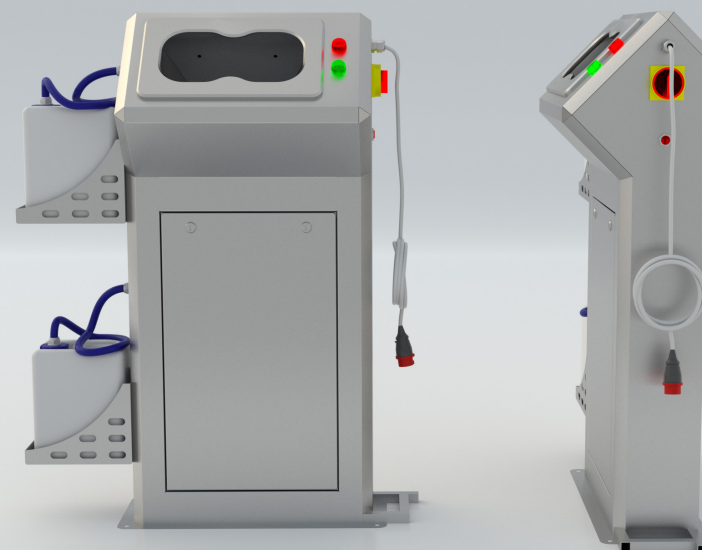
GRENT®



Scan and turn
ROUND



3D MODEL



Hand hygiene station GRENT-017 R

Description:

Hand hygiene station GRENT-017 R is designed for automatic contactless supply of soap with subsequent supply of water to personnel before approaching the disinfection unit.

The soap supply is turned on when you bring your hands to the trigger zone of the first photocell located in the chamber. Liquid soap is supplied automatically using an electric pump. Soap is supplied by one nozzle located in the upper part of the chamber.

Then, when you raise your hands, the water supply is triggered.

Design features:

Standard protection against dust and moisture according to IP54 classification, optional - IP65

Floor-standing version

Light indication of the end of soap in the canister

Fine-tuning the operation of the system, the ability to independently adjust the volume of soap supply, water temperature and other parameters depending on the station configuration

Material - stainless steel AISI 304

Hot and cold water supply

Sewer drain - mm 50



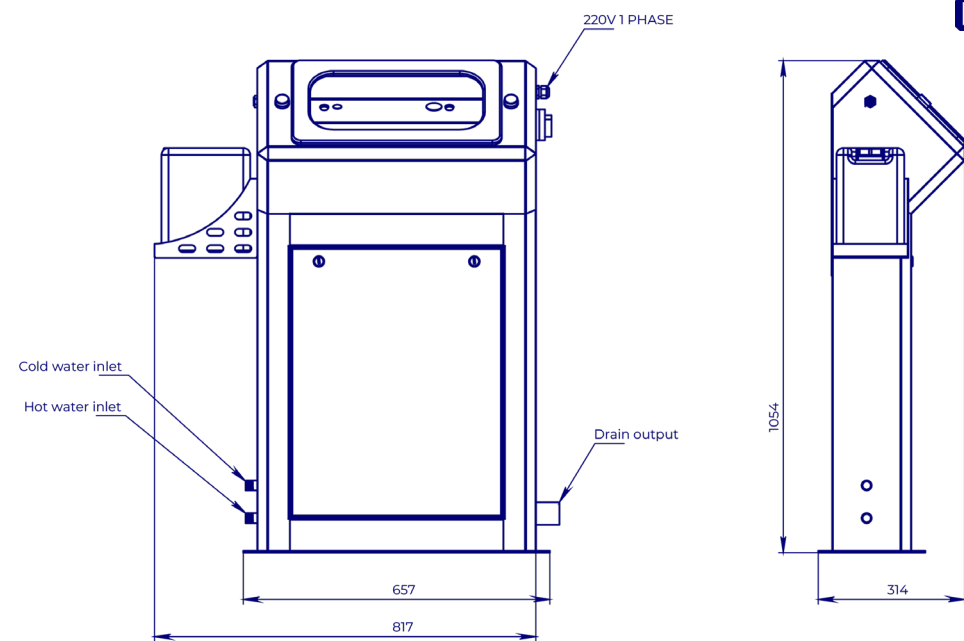
Hand hygiene station GRENT-017 R

Product ID: 1.8.1.17

Characteristics:

Weight, kg	58
Power consumption, kW	0,15
Mains voltage, V	220
Mains frequency, Hz	50
Connection to hot and cold water supply G	½
Length, mm	817
Width, mm	314
Height, mm	1054
Material	AISI 304

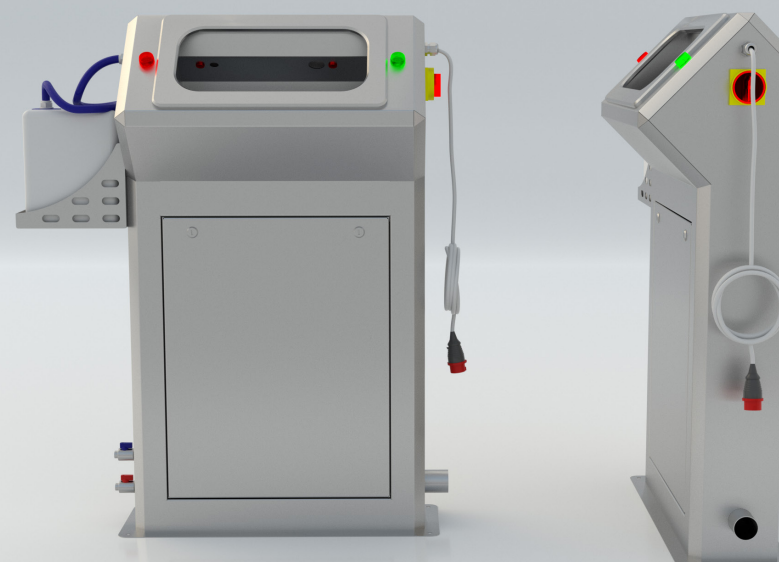
GRENT



Scan and turn
ROUND



3D MODEL



Hand hygiene station GRENT-018 R

Description:

Hand hygiene station GRENT-018 R is designed for washing and disinfecting hands when entering clean areas in production.

Design features:

Standard protection against dust and moisture according to IP54 classification, optional - IP65

Modern ergonomic design

Floor-standing version

Fine-tuning of the system operation, the ability to independently adjust the water temperature, supply volume of liquid, soap and other parameters depending on the station configuration

Voice notification system. Voice notification of employees to speed up passage and notify about emergency situations, such as running out of soap or liquid, turning off the turnstile, etc.

The cloud control system will allow you to remotely configure station parameters and obtain station usage statistics

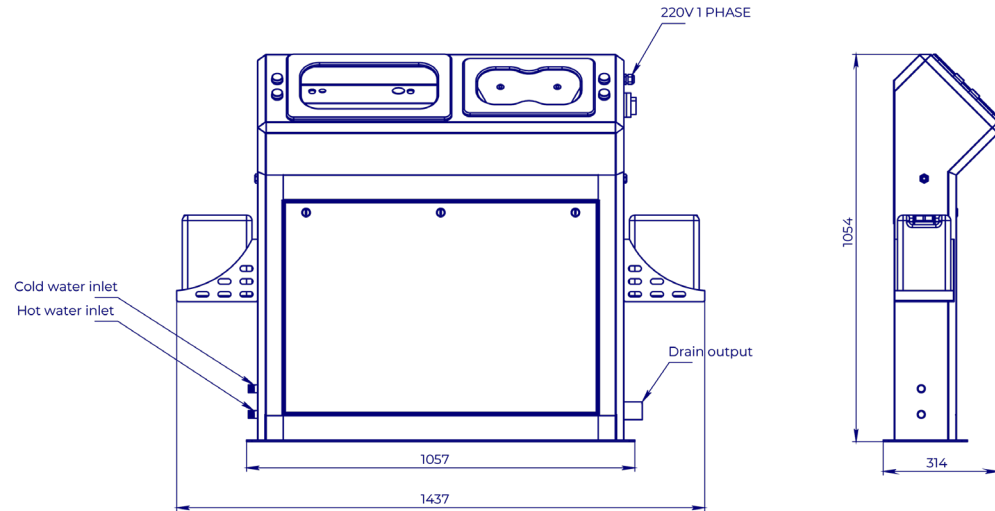
1 year factory warranty



Hand hygiene station GRENT-018 R
Product ID: 1.8.1.18

Characteristics:

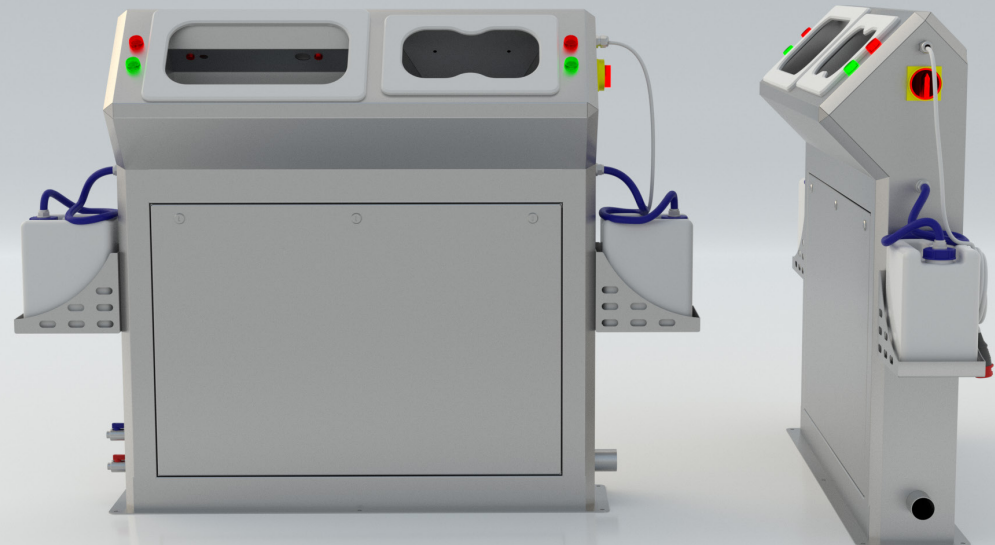
Weight, kg	78
Power consumption, kW	0,16
Mains voltage, V	220
Mains frequency, Hz	50
Connection to hot and cold water supply G	½
Length, mm	1437
Width, mm	314
Height, mm	1054
Material	AISI 304



Scan and turn
ROUND



3D MODEL



Hand hygiene station GRENT-019 R

Description:

Hand hygiene station GRENT-019 R is designed for washing and disinfecting hands when entering clean areas in production.

Design features:

Standard protection against dust and moisture according to IP54 classification, optional - IP65

Modern ergonomic design

Wall version

Fine-tuning of the system operation, the ability to independently adjust the water temperature, supply volume of liquid, soap and other parameters depending on the station configuration

A turnstile of our own design, the mechanism of which is completely made of stainless steel. With manual and automatic shut-off system (if the station is connected to the fire alarm system)

Voice notification system. Voice notification of employees to speed up passage and notify about emergency situations, such as running out of soap or liquid, turning off the turnstile, etc.

The cloud control system will allow you to remotely configure station parameters and obtain station usage statistics

Possibility of integration with any access control systems

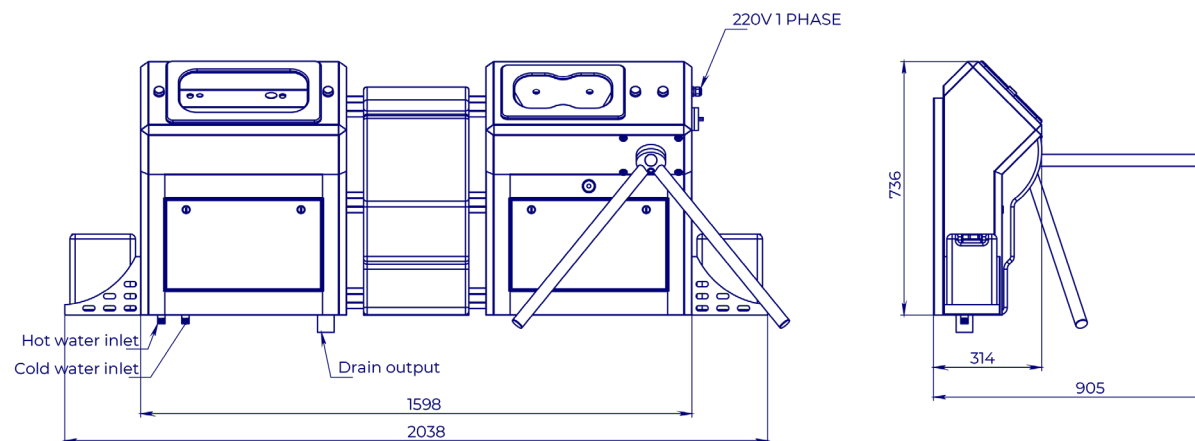
1 year factory warranty



Hand hygiene station GRENT-019 R
Product ID: 1.8.1.19

Characteristics:

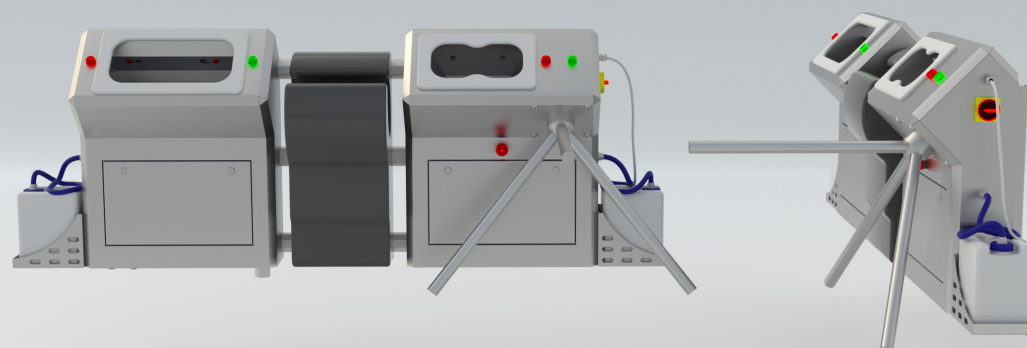
Weight, kg	127
Power consumption, kW	1,7
Mains voltage, V	220
Mains frequency, Hz	50
Connection to hot and cold water supply G	½
Length, mm	2038
Width, mm	314
Width with turnstile, mm	905
Height, mm	736
Material	AISI 304



Scan and turn
ROUND



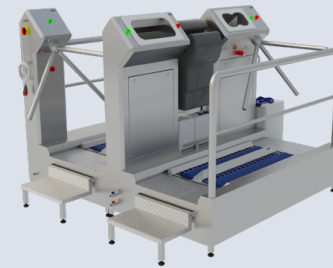
3D MODEL





Full control hygiene stations

Full control hygiene station GRENT-021 P	52
Full control hygiene station GRENT-022 P (brushes 600 mm)	54
Full control hygiene station GRENT-022 P (brushes 800 mm)	56
Full control hygiene station GRENT-023 P	58
Full control hygiene station GRENT-024 P	60
Full control hygiene station GRENT-025 P	62
Full control hygiene station GRENT-026 P	64
Full control hygiene station GRENT-027 P	66
Full control hygiene station GRENT-028 P	68
Full control hygiene station GRENT-029 P	70
Full control hygiene station GRENT-030 P	72



Full control hygiene station GRENT-021 P

Description:

One-sided full control hygiene station GRENT-021 P is designed for disinfection of hands and soles of boots when entering clean areas in production.

Design features:

Standard protection against dust and moisture according to IP54 classification, optional - IP65

Modern ergonomic design

Fine-tuning of the system operation, the ability to independently adjust the water temperature, supply volume of liquid, soap and other parameters depending on the station configuration

A turnstile of our own design, the mechanism of which is completely made of stainless steel. With manual and automatic shut-off system (if the station is connected to the fire alarm system)

Voice notification system. Voice notification of employees to speed up passage and notify about emergency situations, such as running out of soap or liquid, turning off the turnstile, etc.

The cloud control system will allow you to remotely configure station parameters and obtain station usage statistics

Possibility of integration with any access control systems

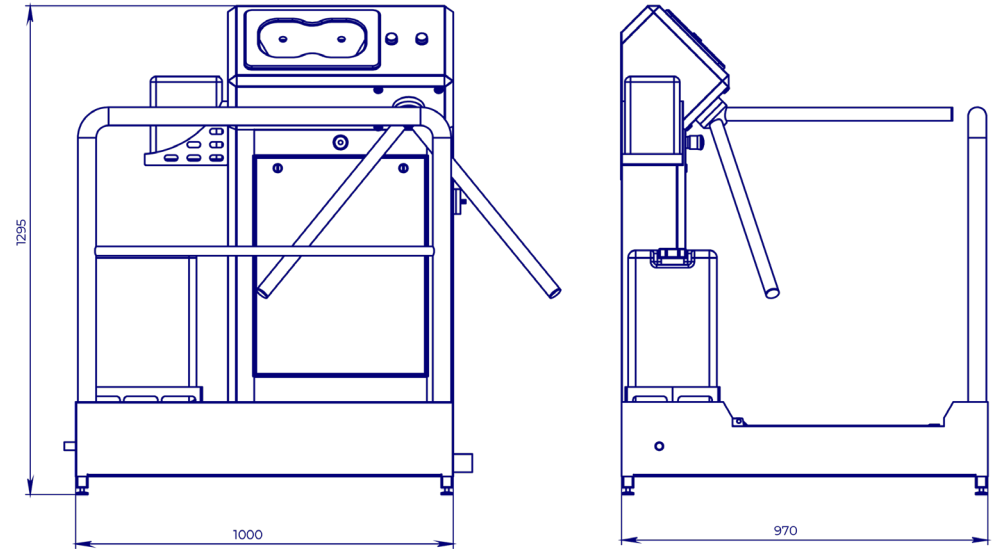
1 year factory warranty



Full control hygiene station GRENT-021 P
Product ID: 1.8.1.21

Characteristics:

Flow rate, sec. per person	11
Sewer drain, mm	50
Weight, kg	120
Power consumption, kW	0,2
Mains voltage, V	220
Mains frequency, Hz	50
Connection to hot and cold water supply G	½
Length, mm	1000
Width, mm	970
Height, mm	1295



Scan and turn
ROUND



3D MODEL



Full control hygiene station GRENT-022 P (brushes 600 mm)

Description:

One-sided full control hygiene station GRENT-022 P is designed for disinfection of hands and soles of boots when entering clean areas in production.

Design features:

Standard protection against dust and moisture according to IP54 classification, optional - IP65

Modern ergonomic design

Fine-tuning of the system operation, the ability to independently adjust the water temperature, supply volume of liquid, soap and other parameters depending on the station configuration

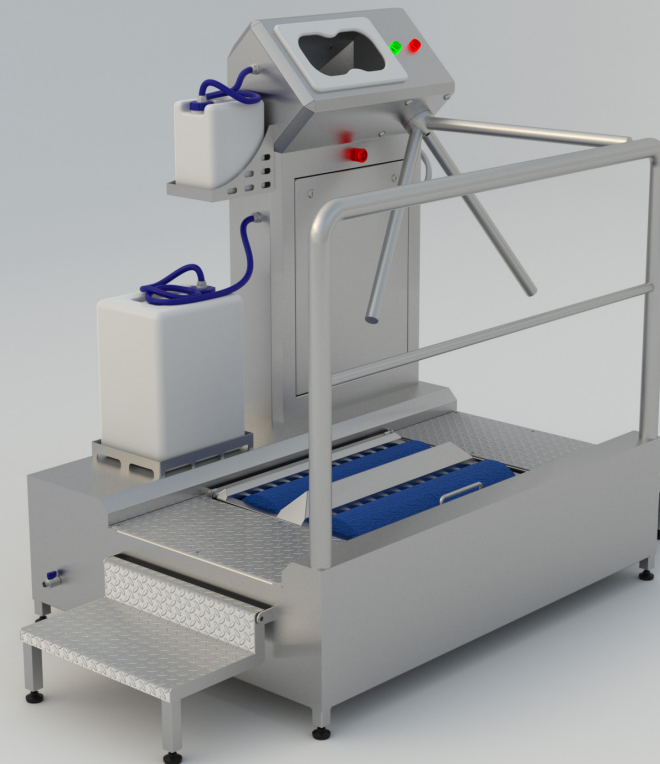
A turnstile of our own design, the mechanism of which is completely made of stainless steel. With manual and automatic shut-off system (if the station is connected to the fire alarm system)

Voice notification system. Voice notification of employees to speed up passage and notify about emergency situations, such as running out of soap or liquid, turning off the turnstile, etc.

The cloud control system will allow you to remotely configure station parameters and obtain station usage statistics

Possibility of integration with any access control systems

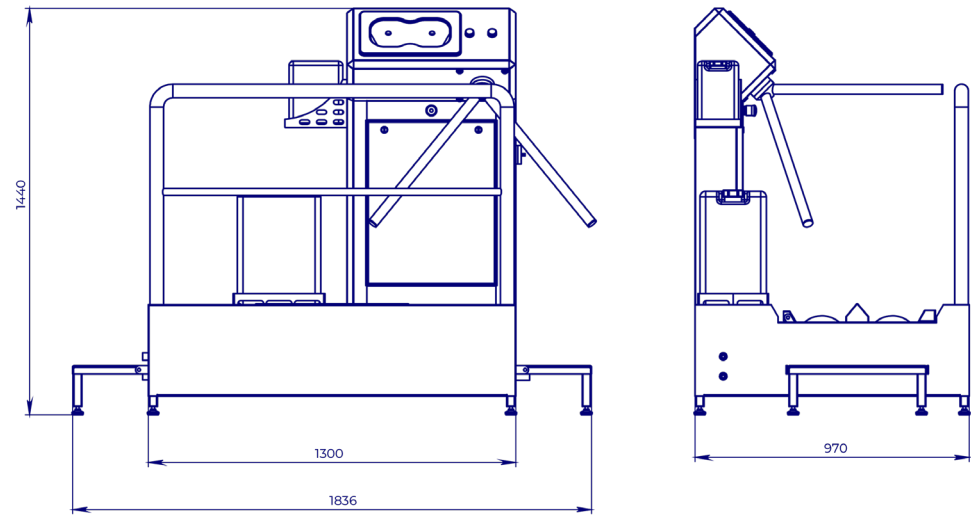
1 year factory warranty



Full control hygiene station GRENT-022 P
 Product ID: 1.8.1.22.600

Characteristics:

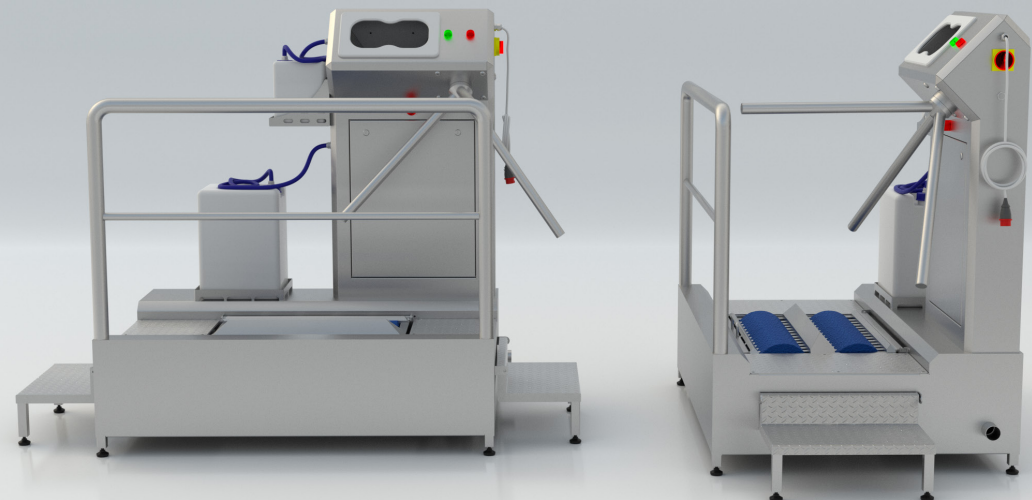
Flow rate, sec. per person	11
Sewer drain, mm.....	50
Weight, kg	220
Power consumption, kW	0,7
Mains voltage, V	220/360
Mains frequency, Hz	50
Connection to hot and cold water supply G	½
Length, mm	1836
Width, mm	970
Height, mm	1440
Dimensions of brush shafts, mm	600



Scan and turn
 ROUND



3D MODEL



Full control hygiene station GRENT-022 P (brushes 900 mm)

Description:

One-sided full control hygiene station GRENT-022 P is designed for disinfection of hands and soles of boots when entering clean areas in production.

Design features:

Standard protection against dust and moisture according to IP54 classification, optional - IP65

Modern ergonomic design

Fine-tuning of the system operation, the ability to independently adjust the water temperature, supply volume of liquid, soap and other parameters depending on the station configuration

A turnstile of our own design, the mechanism of which is completely made of stainless steel. With manual and automatic shut-off system (if the station is connected to the fire alarm system)

Voice notification system. Voice notification of employees to speed up passage and notify about emergency situations, such as running out of soap or liquid, turning off the turnstile, etc.

The cloud control system will allow you to remotely configure station parameters and obtain station usage statistics

Possibility of integration with any access control systems

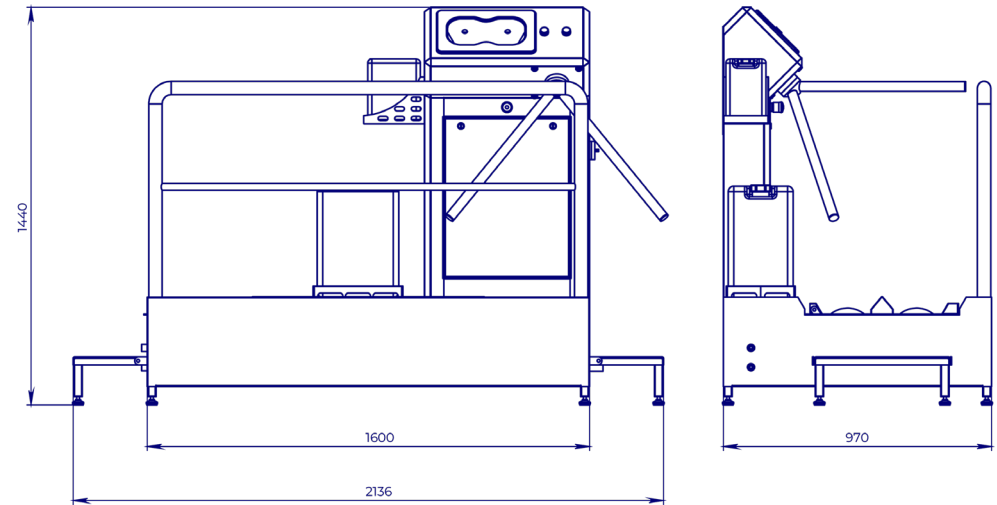
1 year factory warranty



Full control hygiene station GRENT-022 P
Product ID: 1.8.1.22.900

Characteristics:

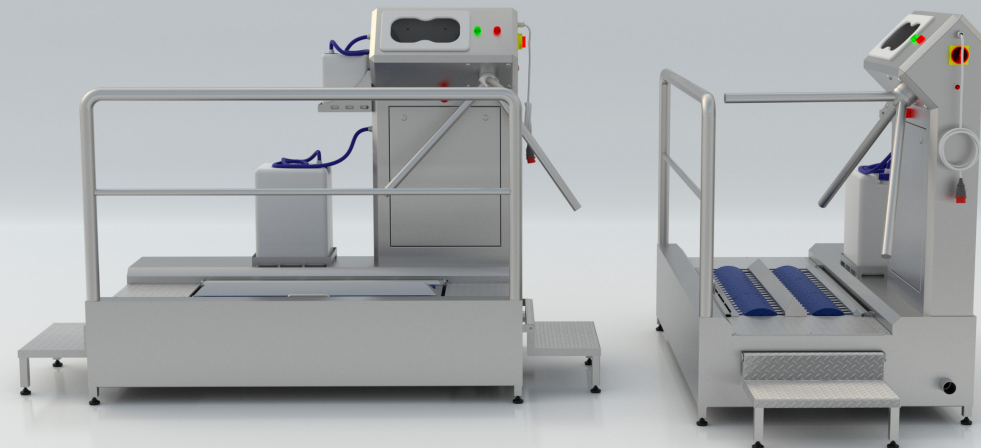
Flow rate, sec. per person	11
Sewer drain, mm	50
Weight, kg	219
Power consumption, kW	0,7
Mains voltage, V	220/360
Mains frequency, Hz	50
Connection to hot and cold water supply G	½
Length, mm	2136
Width, mm	970
Height, mm	1440
Dimensions of brush shafts, mm	900



Scan and turn
ROUND



3D MODEL



Full control hygiene station GRENT-023 P

Description:

One-sided full control hygiene station GRENT-023 P is designed for washing and disinfection of hands and soles of boots when entering clean areas in production.

Design features:

Standard protection against dust and moisture according to IP54 classification, optional - IP65

Modern ergonomic design

Fine-tuning of the system operation, the ability to independently adjust the water temperature, supply volume of liquid, soap and other parameters depending on the station configuration

A turnstile of our own design, the mechanism of which is completely made of stainless steel. With manual and automatic shut-off system (if the station is connected to the fire alarm system)

Voice notification system. Voice notification of employees to speed up passage and notify about emergency situations, such as running out of soap or liquid, turning off the turnstile, etc.

The cloud control system will allow you to remotely configure station parameters and obtain station usage statistics

Possibility of integration with any access control systems

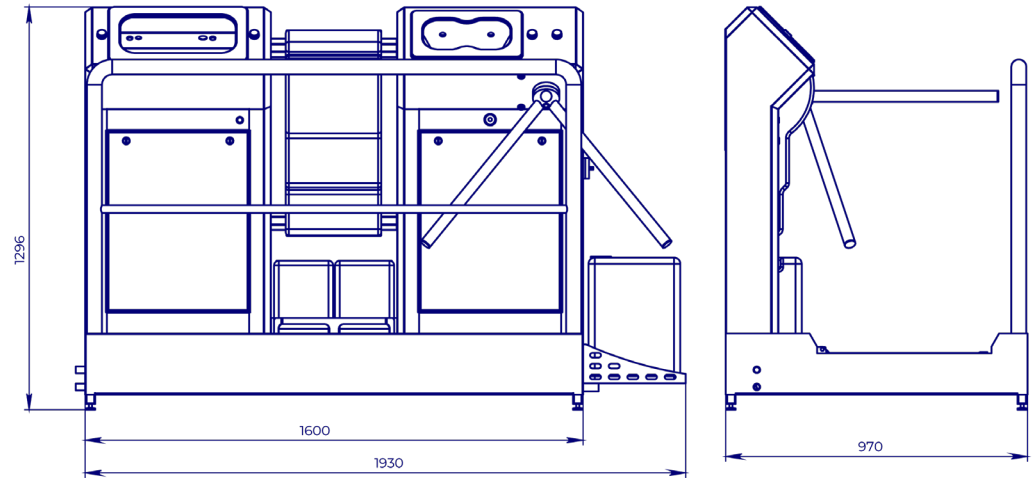
1 year factory warranty



Full control hygiene station GRENT-023 P
Product ID: 1.8.1.23

Characteristics:

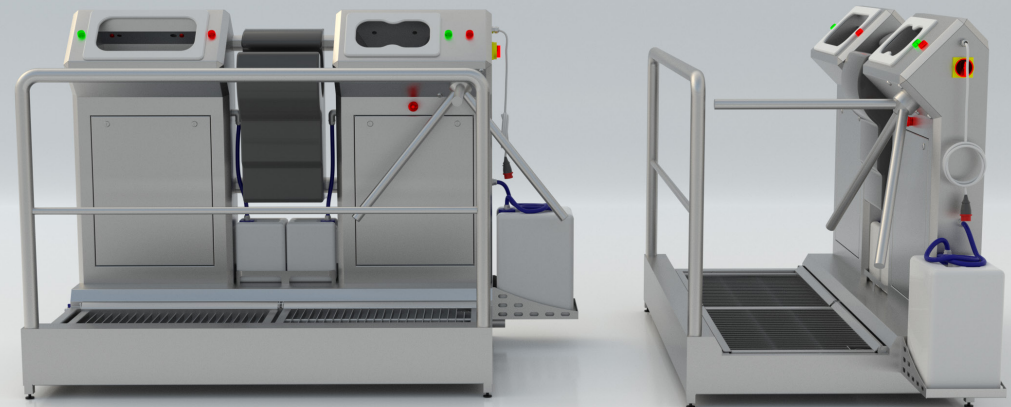
Flow rate, sec. per person	11
Sewer drain, mm	50
Weight, kg	197
Power consumption, kW	1,8
Mains voltage, V	220
Mains frequency, Hz	50
Connection to hot and cold water supply G	½
Length, mm	1930
Width, mm	970
Height, mm	1296



Scan and turn
ROUND



3D MODEL



Full control hygiene station GRENT-024 P

Description:

One-sided full control hygiene station GRENT-024 P is designed for washing and disinfection of hands and soles of boots when entering clean areas in production.

Design features:

Standard protection against dust and moisture according to IP54 classification, optional - IP65

Modern ergonomic design

Fine-tuning of the system operation, the ability to independently adjust the water temperature, supply volume of liquid, soap and other parameters depending on the station configuration

A turnstile of our own design, the mechanism of which is completely made of stainless steel. With manual and automatic shut-off system (if the station is connected to the fire alarm system)

Voice notification system. Voice notification of employees to speed up passage and notify about emergency situations, such as running out of soap or liquid, turning off the turnstile, etc.

The cloud control system will allow you to remotely configure station parameters and obtain station usage statistics

Possibility of integration with any access control systems

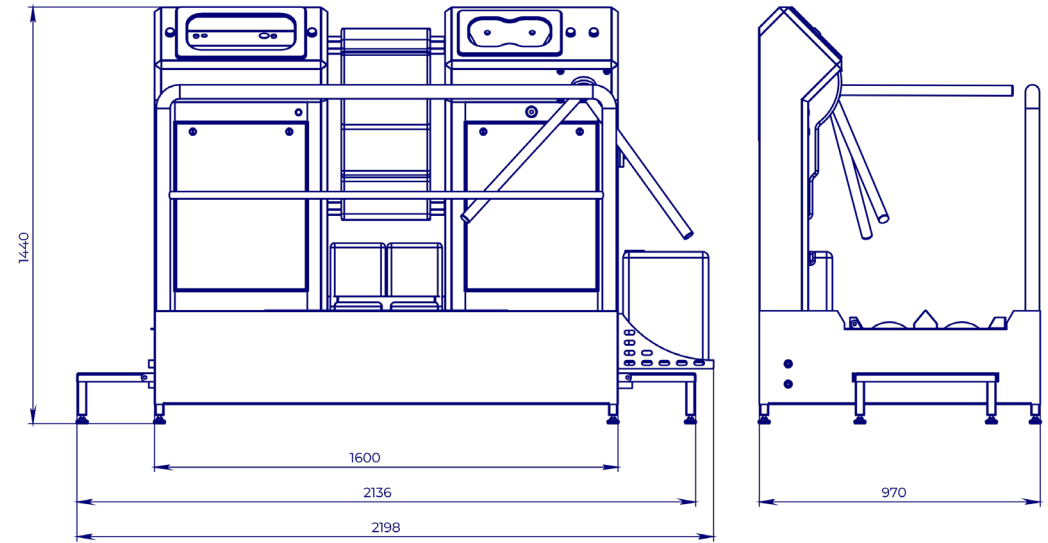
1 year factory warranty



Full control hygiene station GRENT-024 P
 Product ID: 1.8.1.24

Characteristics:

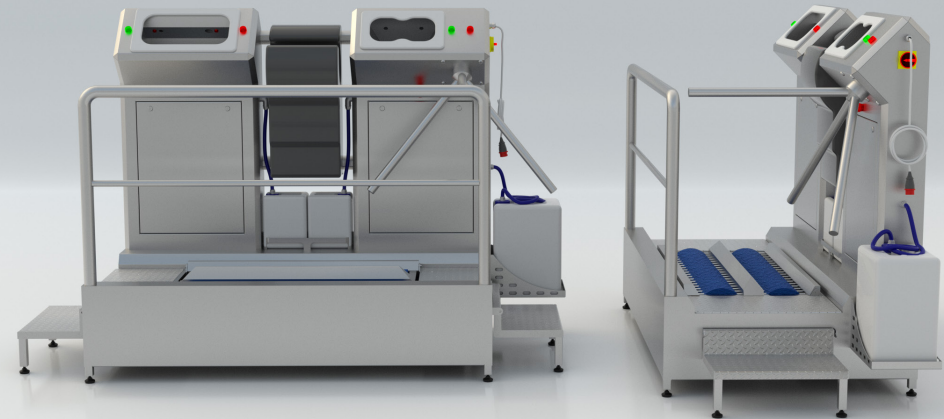
Flow rate, sec. per person	11
Sewer drain, mm	50
Weight, kg	270
Power consumption, kW	2,3
Mains voltage, V	220/380
Mains frequency, Hz	50
Connection to hot and cold water supply G	½
Length, mm	2198
Width, mm	970
Height, mm	1440
Dimensions of brush shafts, mm	900



Scan and turn
 ROUND



3D MODEL



Full control hygiene station GRENT-025 P

Description:

Double-sided full control hygiene station GRENT-025 P is designed for washing and disinfection of hands and soles of boots when entering clean areas in production.

Design features:

Standard protection against dust and moisture according to IP54 classification, optional - IP65

Modern ergonomic design

Fine-tuning of the system operation, the ability to independently adjust the water temperature, supply volume of liquid, soap and other parameters depending on the station configuration

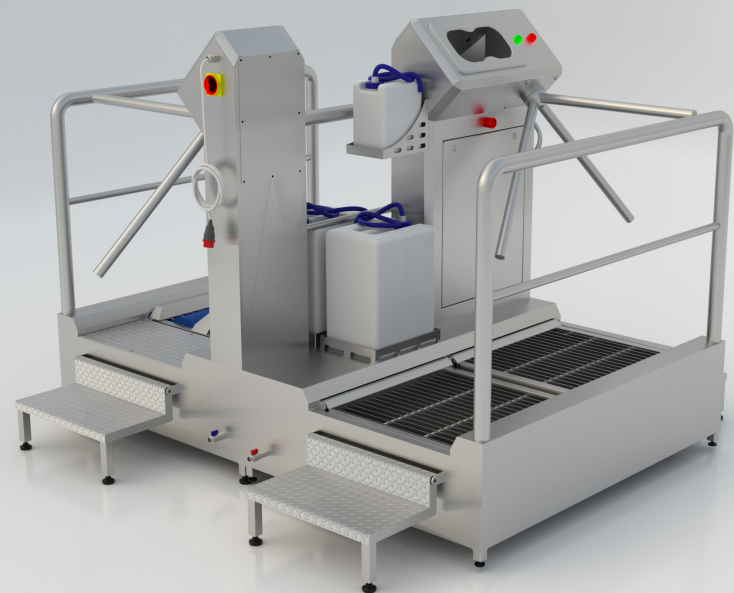
A turnstile of our own design, the mechanism of which is completely made of stainless steel. With manual and automatic shut-off system (if the station is connected to the fire alarm system)

Voice notification system. Voice notification of employees to speed up passage and notify about emergency situations, such as running out of soap or liquid, turning off the turnstile, etc.

The cloud control system will allow you to remotely configure station parameters and obtain station usage statistics

Possibility of integration with any access control systems

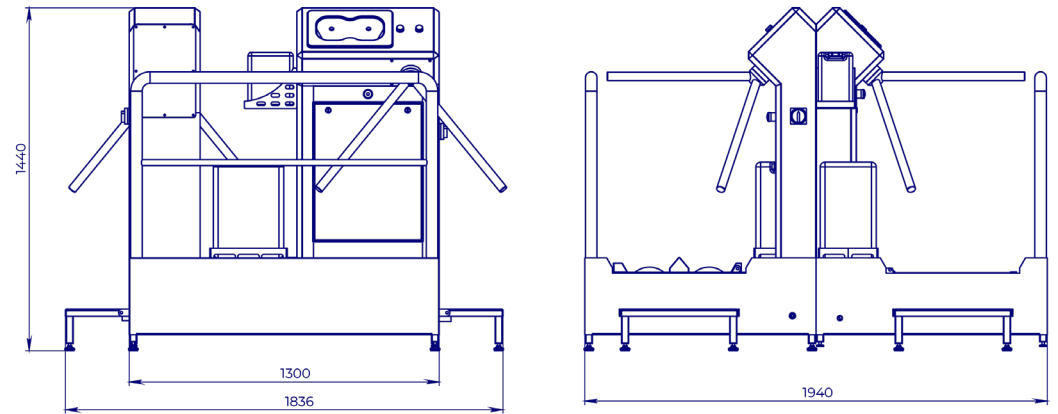
1 year factory warranty



Full control hygiene station GRENT-025 P
Product ID: 1.8.1.25

Characteristics:

Flow rate, sec. per person	11
Sewer drain, mm	50
Weight, kg	348
Power consumption, kW	0,8
Mains voltage, V	220/360
Mains frequency, Hz	50
Connection to hot and cold water supply G	½
Length, mm	1836
Width, mm	1940
Height, mm	1440
Dimensions of brush shafts, mm	900



Scan and turn
ROUND



3D MODEL



Full control hygiene station GRENT-026 P

Description:

Double-sided full control hygiene station GRENT-026 P is designed for disinfection of hands and soles of boots when entering and exiting clean rooms in production.

Design features:

Standard protection against dust and moisture according to IP54 classification, optional - IP65

Modern ergonomic design

Fine-tuning of the system operation, the ability to independently adjust the water temperature, supply volume of liquid, soap and other parameters depending on the station configuration

A turnstile of our own design, the mechanism of which is completely made of stainless steel. With manual and automatic shut-off system (if the station is connected to the fire alarm system)

Voice notification system. Voice notification of employees to speed up passage and notify about emergency situations, such as running out of soap or liquid, turning off the turnstile, etc.

The cloud control system will allow you to remotely configure station parameters and obtain station usage statistics

Possibility of integration with any access control systems

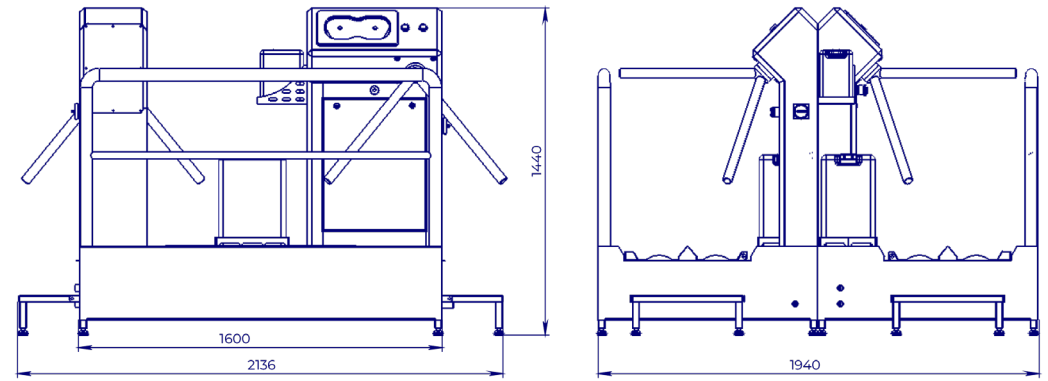
1 year factory warranty



Full control hygiene station GRENT-026 P
Product ID: 1.8.1.26

Characteristics:

Flow rate, sec. per person	11
Weight, kg	417
Power consumption, kW	1,3
Mains voltage, V	220/380
Mains frequency, Hz	50
Connection to hot and cold water supply G	½
Length, mm	2136
Width, mm	1940
Height, mm	1440
Dimensions of brush shafts, mm	900



Scan and turn
ROUND



3D MODEL



Full control hygiene station GRENT-027 P

Description:

Double-sided full control hygiene station GRENT-027 P is designed for disinfection of hands and soles of boots when entering and exiting clean rooms in production.

Design features:

Standard protection against dust and moisture according to IP54 classification, optional - IP65

Modern ergonomic design

Fine-tuning of the system operation, the ability to independently adjust the water temperature, supply volume of liquid, soap and other parameters depending on the station configuration

A turnstile of our own design, the mechanism of which is completely made of stainless steel. With manual and automatic shut-off system (if the station is connected to the fire alarm system)

Voice notification system. Voice notification of employees to speed up passage and notify about emergency situations, such as running out of soap or liquid, turning off the turnstile, etc.

The cloud control system will allow you to remotely configure station parameters and obtain station usage statistics

Possibility of integration with any access control systems

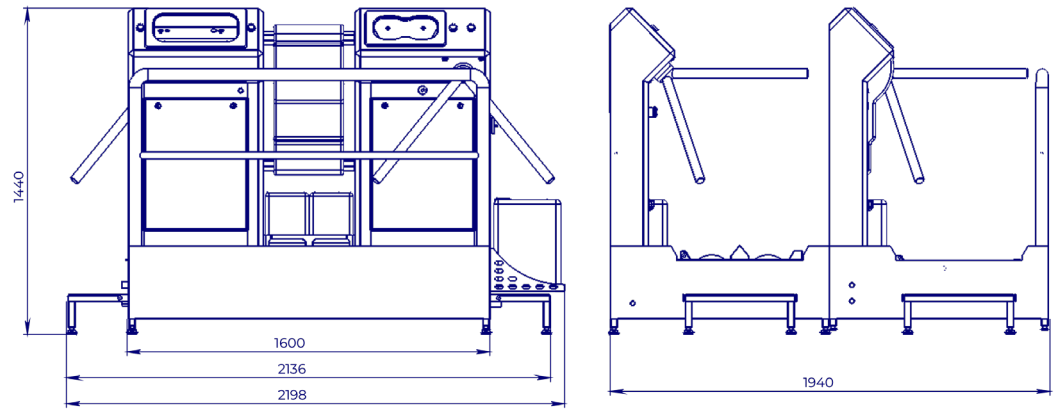
1 year factory warranty



Full control hygiene station GRENT-027 P
Product ID: 1.8.1.27

Characteristics:

Flow rate, sec. per person	11
Sewer drain, mm	50
Weight, kg	329
Power consumption, kW	2,35
Mains voltage, V	220/380
Mains frequency, Hz	50
Connection to hot and cold water supply G	½
Length, mm	2198
Width, mm	1940
Height, mm	1440
Dimensions of brush shafts, mm	900



Scan and turn
ROUND



3D MODEL



Full control hygiene station GRENT-028 P

Description:

Double-sided full control hygiene station GRENT-028 P is designed for disinfection of hands and soles of boots when entering and exiting clean rooms in production.

Design features:

Standard protection against dust and moisture according to IP54 classification, optional - IP65

Modern ergonomic design

Fine-tuning of the system operation, the ability to independently adjust the water temperature, supply volume of liquid, soap and other parameters depending on the station configuration

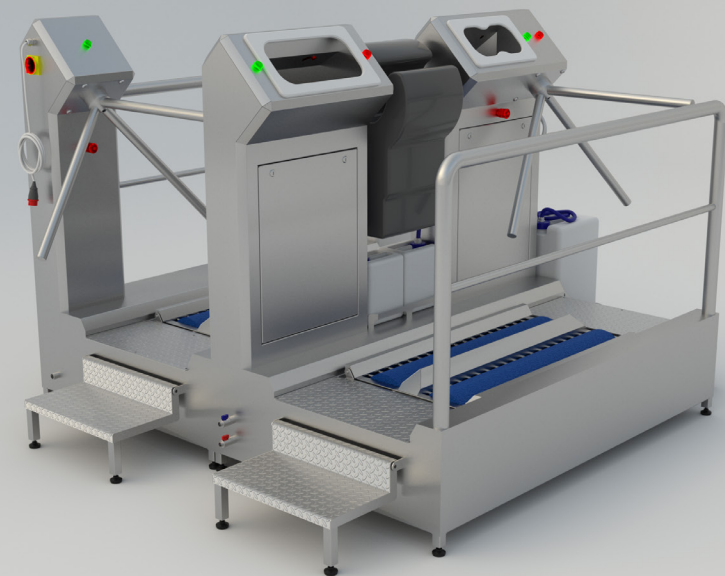
A turnstile of our own design, the mechanism of which is completely made of stainless steel. With manual and automatic shut-off system (if the station is connected to the fire alarm system)

Voice notification system. Voice notification of employees to speed up passage and notify about emergency situations, such as running out of soap or liquid, turning off the turnstile, etc.

The cloud control system will allow you to remotely configure station parameters and obtain station usage statistics

Possibility of integration with any access control systems

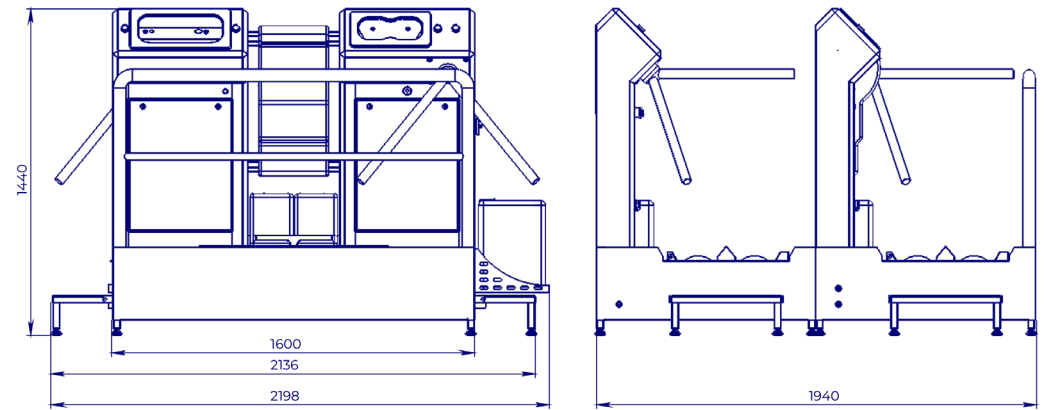
1 year factory warranty



Full control hygiene station GRENT-028 P
 Product ID: 1.8.1.28

Characteristics:

Flow rate, sec. per person	11
Sewer drain, mm	50
Weight, kg	480
Power consumption, kW	2,85
Mains voltage, V	220/380
Mains frequency, Hz	50
Connection to hot and cold water supply G	½
Length, mm	2198
Width, mm	1940
Height, mm	1440
Dimensions of brush shafts, mm	900



Scan and turn
 ROUND



3D MODEL



Full control hygiene station GRENT-029 P

Description:

Double-sided full control hygiene station GRENT-029 P is designed for disinfection of hands and soles of boots when entering and exiting clean rooms in production.

Design features:

Standard protection against dust and moisture according to IP54 classification, optional - IP65

Modern ergonomic design

Fine-tuning of the system operation, the ability to independently adjust the water temperature, supply volume of liquid, soap and other parameters depending on the station configuration

A turnstile of our own design, the mechanism of which is completely made of stainless steel. With manual and automatic shut-off system (if the station is connected to the fire alarm system)

Voice notification system. Voice notification of employees to speed up passage and notify about emergency situations, such as running out of soap or liquid, turning off the turnstile, etc.

The cloud control system will allow you to remotely configure station parameters and obtain station usage statistics

Possibility of integration with any access control systems

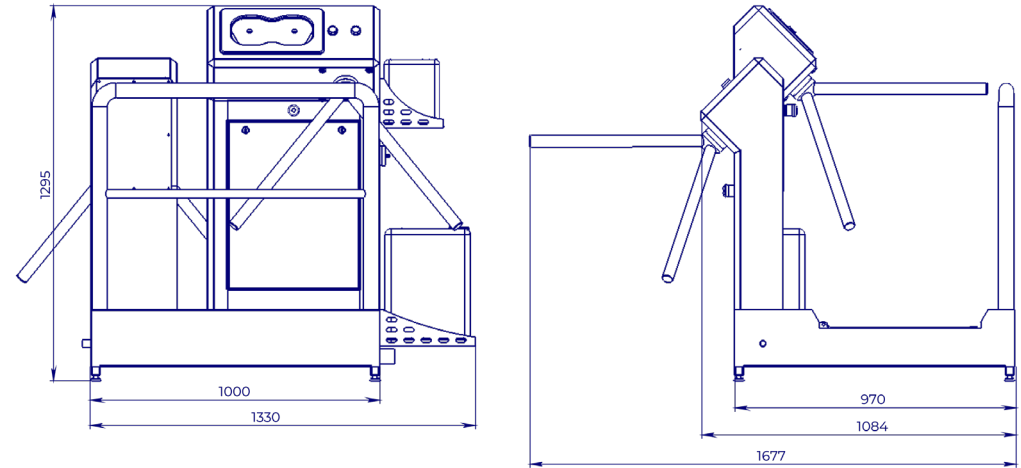
1 year factory warranty



Full control hygiene station GRENT-029 P
 Product ID: 1.8.1.29

Characteristics:

Flow rate, sec. per person	11
Sewer drain, mm	50
Weight, kg	155
Power consumption, kW	0,2
Mains voltage, V	220/380
Mains frequency, Hz	50
Connection to hot and cold water supply G	½
Length, mm	1330
Width, mm	970
Width with turnstile, mm	1677
Height, mm	1295



Scan and turn
 ROUND



3D MODEL



Full control hygiene station GRENT-030 P

Description:

Double-sided full control hygiene station GRENT-030 P is designed for disinfection of hands and soles of boots when entering and exiting clean rooms in production.

Design features:

Standard protection against dust and moisture according to IP54 classification, optional - IP65

Modern ergonomic design

Fine-tuning of the system operation, the ability to independently adjust the water temperature, supply volume of liquid, soap and other parameters depending on the station configuration

A turnstile of our own design, the mechanism of which is completely made of stainless steel. With manual and automatic shut-off system (if the station is connected to the fire alarm system)

Voice notification system. Voice notification of employees to speed up passage and notify about emergency situations, such as running out of soap or liquid, turning off the turnstile, etc.

The cloud control system will allow you to remotely configure station parameters and obtain station usage statistics

Possibility of integration with any access control systems

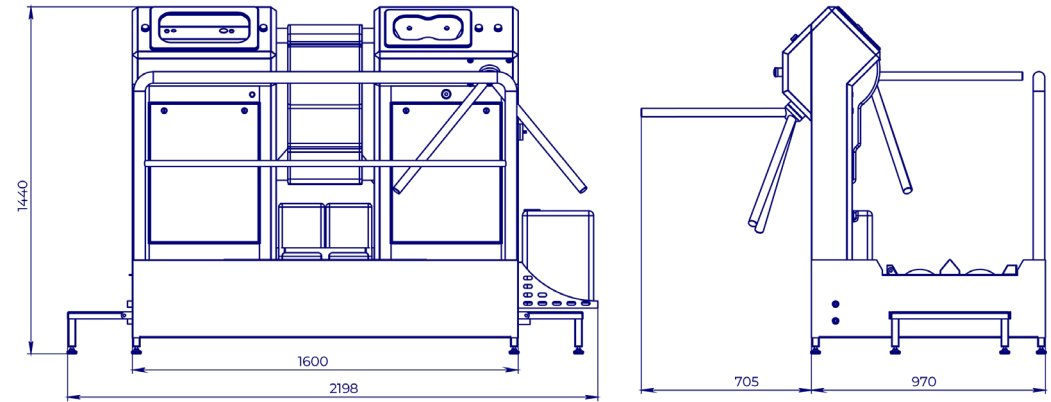
1 year factory warranty



Full control hygiene station GRENT-030 P
Product ID: 1.8.1.30

Characteristics:

Flow rate, sec. per person	11
Sewer drain, mm	50
Weight, kg	286
Power consumption, kW	2,3
Mains voltage, V	220/380
Mains frequency, Hz	50
Connection to hot and cold water supply G	½
Length, mm	2198
Width, mm	1675
Height, mm	1440
Dimensions of brush shafts, mm	900

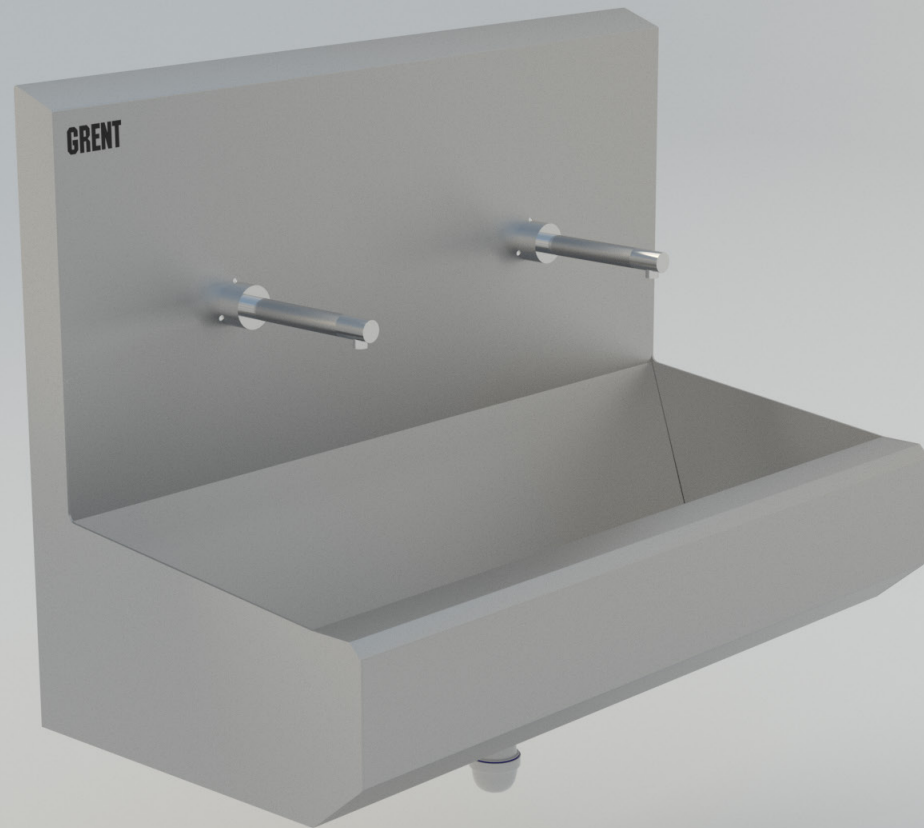


Scan and turn
ROUND



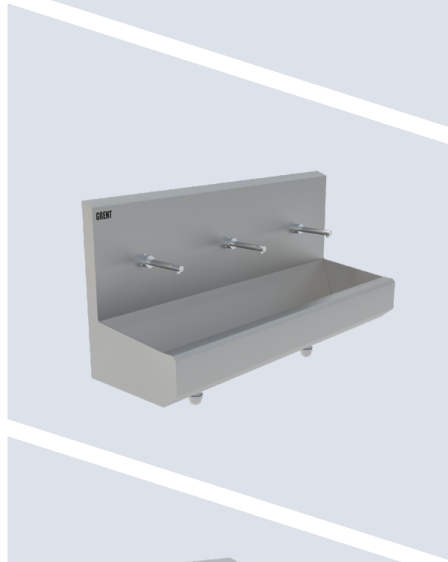
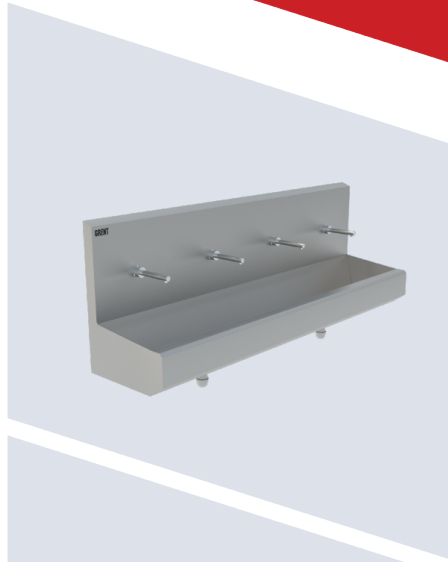
3D MODEL





Hanging Wash Basins

One-section hanging wash basin GRENT-P-01.....	76
One-section hanging wash basin GRENT-P-01 with elbow dispenser.....	78
Two-section hanging wash basin GRENT-P-02	80
Three-section hanging wash basin GRENT-P-03	82
Four-section hanging wash basin GRENT-P-04	84



One-section hanging wash basin GRENT-P-01

Description:

One-section wall-hung wash basin GRENT-P-01 is used for contactless hand washing of personnel mainly in enterprises of catering and food industry.

Activation of water supply is carried out by a photo sensor when you bring your hands to the mixer.

Design features:

Standard protection against dust and moisture according to IP54 classification, optional - IP65

Made of stainless steel AISI 304

Glass-blasted matte surface

Equipped with mixer and siphon

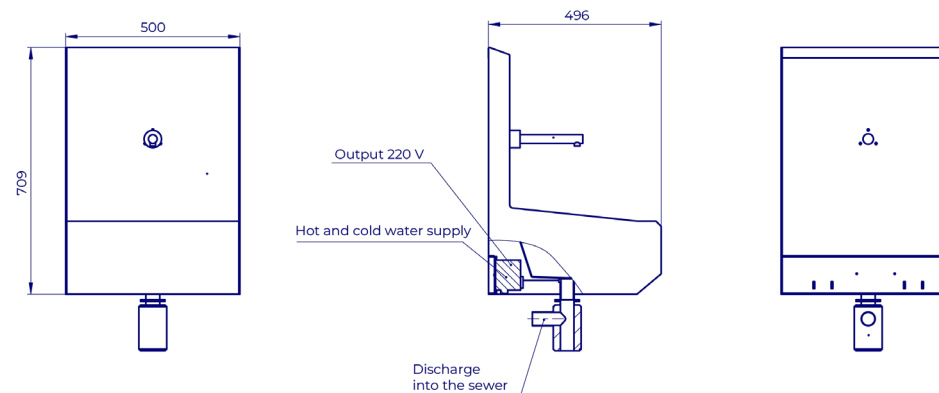
Temperature and volume of water flow are adjustable



One-section hanging wash basin
 GRENT-P-01
 Product ID: 1.8.2.1.01

Characteristics:

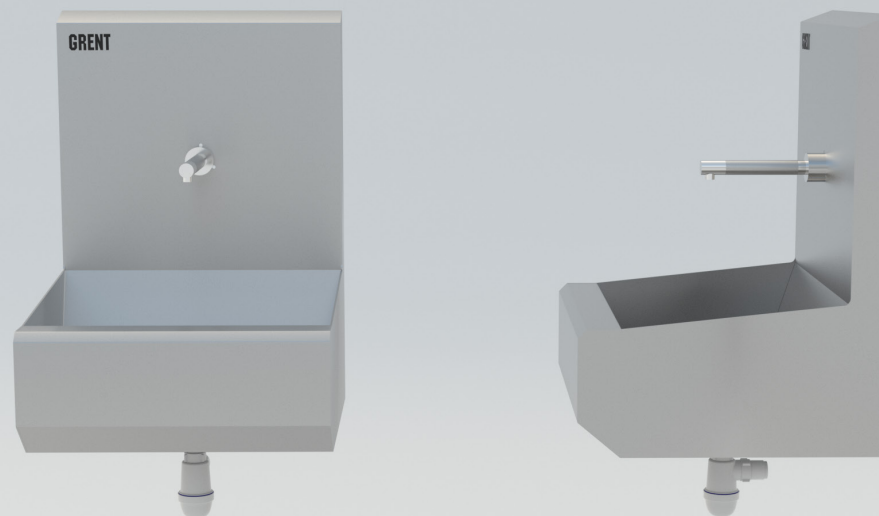
Weight, kg	19
Power consumption, kW	0,1
Mains voltage, V	220
Mains frequency, Hz	50
Length, mm	500
Width, mm	496
Height, mm	709
Material	AISI 304



Scan and turn
 ROUND



3D MODEL



One-section hanging wash basin GRENT-P-01 with elbow dispenser

Description:

One-section wall-hung wash basin GRENT-P-01 is used for contactless hand washing of personnel mainly in enterprises of catering and food industry.

Activation of water supply is carried out by a photo sensor when you bring your hands to the mixer.

Design features:

Standard protection against dust and moisture according to IP54 classification, optional - IP65

Made of stainless steel AISI 304

Glass-blasted matte surface

Equipped with mixer, siphon and elbow dispenser

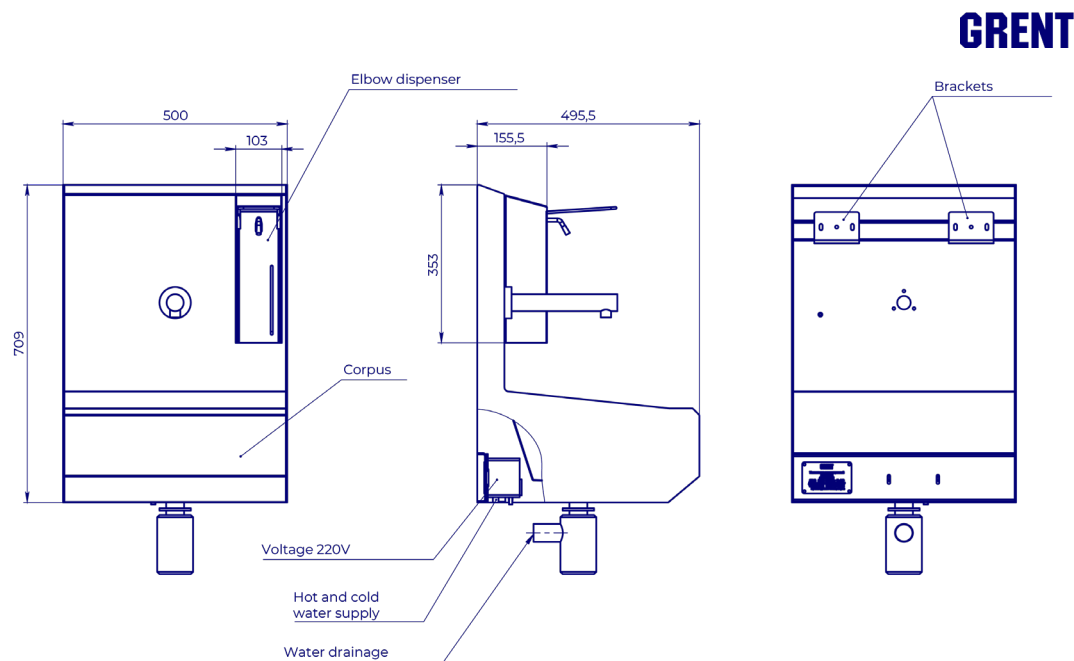
Temperature and volume of water flow are adjustable



One-section hanging wash basin
 GRENT-P-01 with elbow dispenser
 Product ID: 1.8.2.1.01

Characteristics:

Weight, kg	19,2
Power consumption, kW	0,1
Mains voltage, V	220
Mains frequency, Hz	50
Length, mm	500
Width, mm	496
Height, mm	709
Material	AISI 304



Scan and turn
 ROUND



3D MODEL



Two-section hanging wash basin GRENT-P-02

Description:

Two-section wall-hung wash basin GRENT-P-02 is used for contactless hand washing of personnel mainly in enterprises of catering and food industry.

Activation of water supply is carried out by a photo sensor when you bring your hands to the mixer.

Design features:

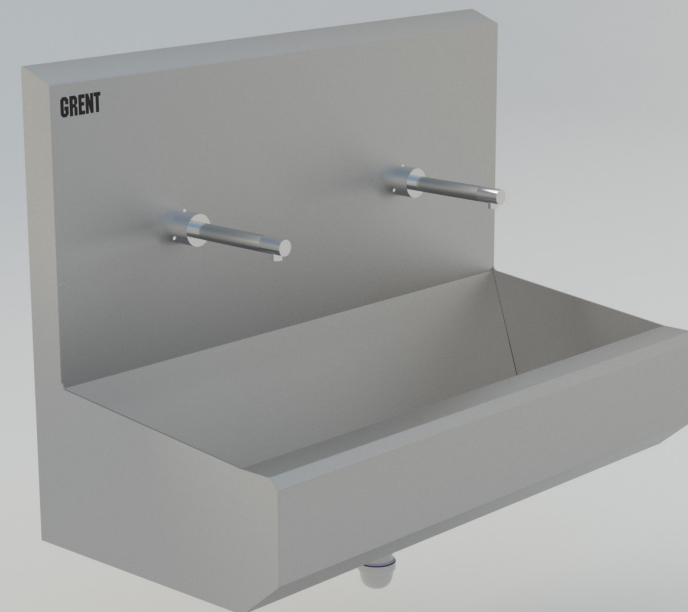
Standard protection against dust and moisture according to IP54 classification, optional - IP65

Made of stainless steel AISI 304

Glass-blasted matte surface

Equipped with mixer and siphon

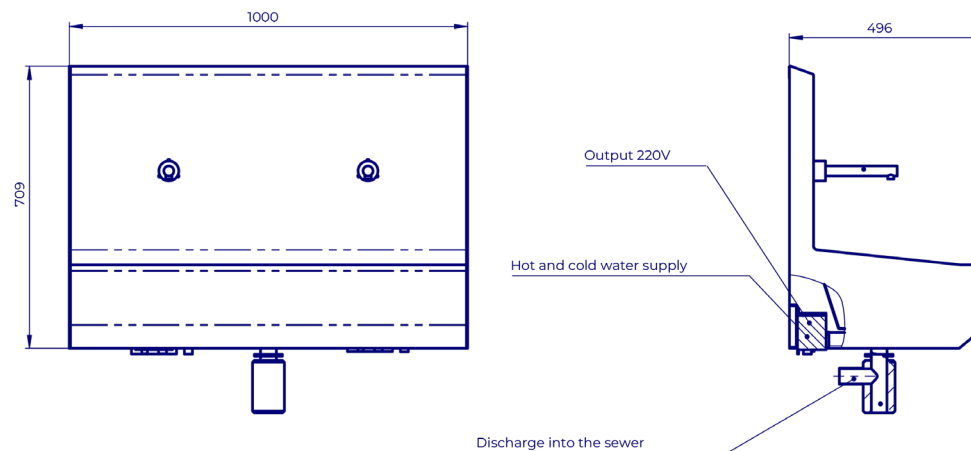
Temperature and volume of water flow are adjustable



Two-section hanging wash basin
 GRENT-P-02
 Product ID: 1.8.2.1.02

Characteristics:

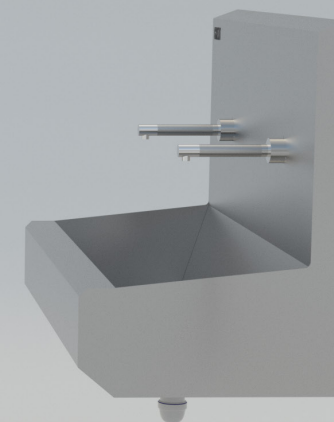
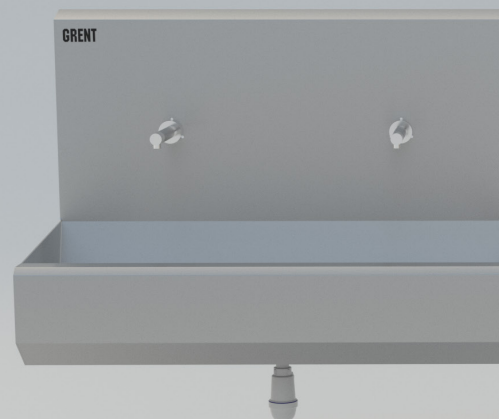
Weight, kg	29
Power consumption, kW	0,1
Mains voltage, V	220
Mains frequency, Hz	50
Length, mm	1000
Width, mm	496
Height, mm	709
Material	AISI 304



Scan and turn
 ROUND



3D MODEL



Three-section hanging wash basin GRENT-P-03

Description:

Three-section wall-hung wash basin GRENT-P-03 is used for contactless hand washing of personnel mainly in enterprises of catering and food industry.

Activation of water supply is carried out by a photo sensor when you bring your hands to the mixer.

Design features:

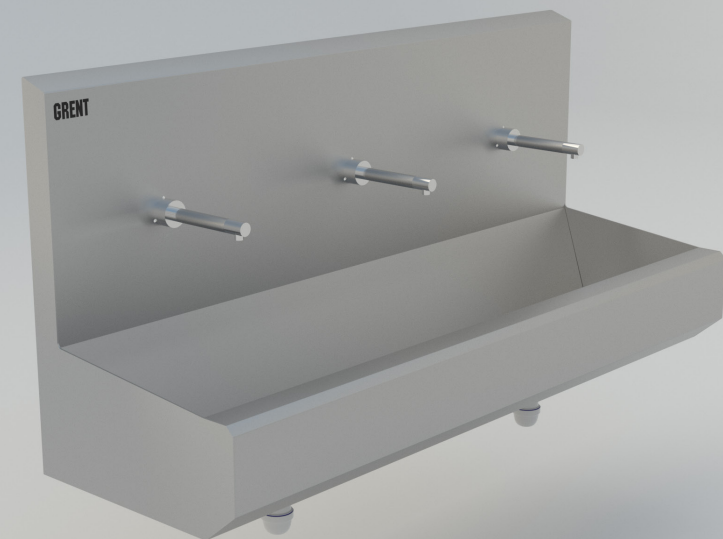
Standard protection against dust and moisture according to IP54 classification, optional - IP65

Made of stainless steel AISI 304

Glass-blasted matte surface

Equipped with mixer and siphon

Temperature and volume of water flow are adjustable



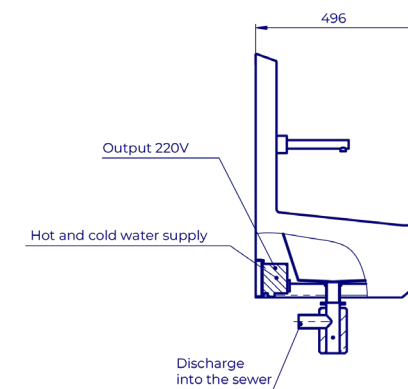
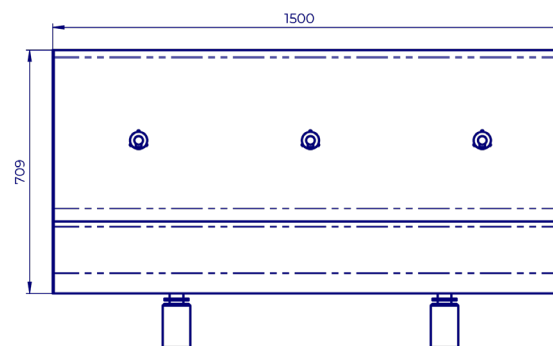
Three-section hanging wash basin

GRENT-P-03

Product ID: 1.8.2.1.03

Characteristics:

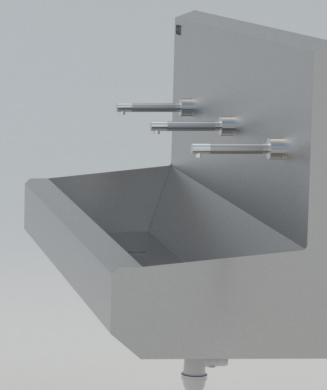
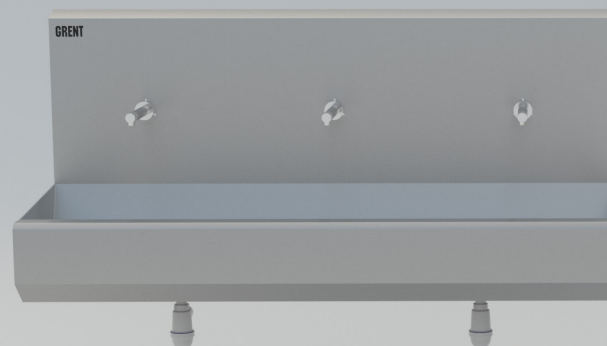
Weight, kg	40
Power consumption, kW	0,1
Mains voltage, V	220
Mains frequency, Hz	50
Length, mm	1500
Width, mm	496
Height, mm	709
Material	AISI 304



Scan and turn
ROUND



3D MODEL



Four-section hanging wash basin GRENT-P-04

Description:

Four-section wall-hung wash basin GRENT-P-04 is used for contactless hand washing of personnel mainly in enterprises of catering and food industry.

Activation of water supply is carried out by a photo sensor when you bring your hands to the mixer.

Design features:

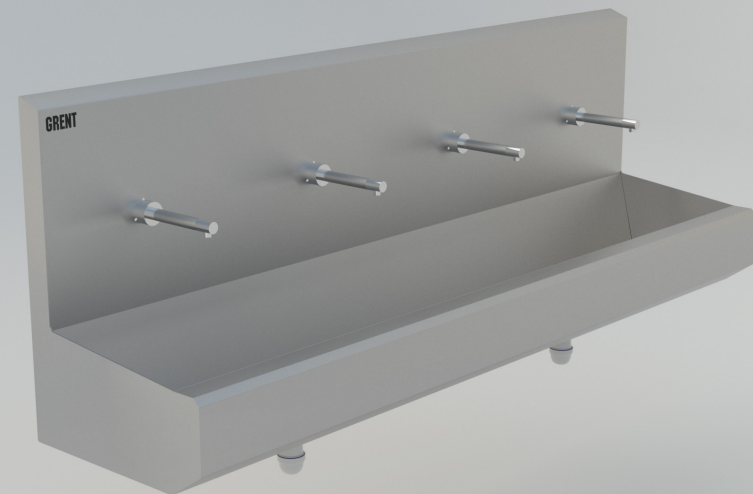
Standard protection against dust and moisture according to IP54 classification, optional - IP65

Made of stainless steel AISI 304

Glass-blasted matte surface

Equipped with mixer and siphon

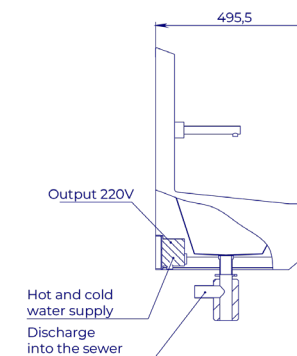
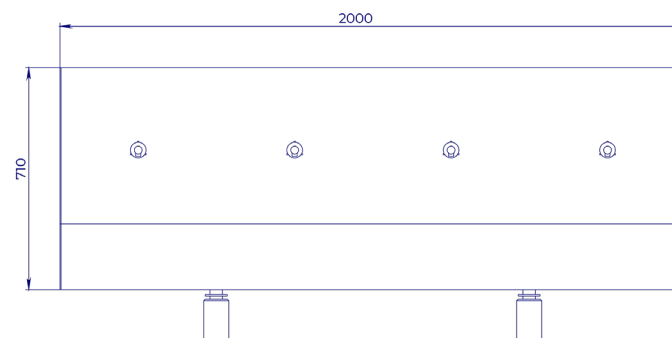
Temperature and volume of water flow are adjustable



Four-section hanging wash basin
 GRENT-P-04
 Product ID: 1.8.2.1.04

Characteristics:

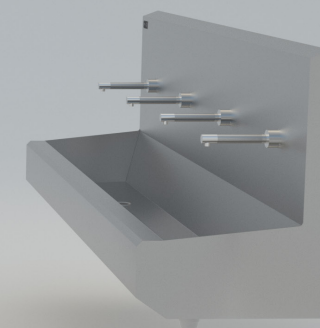
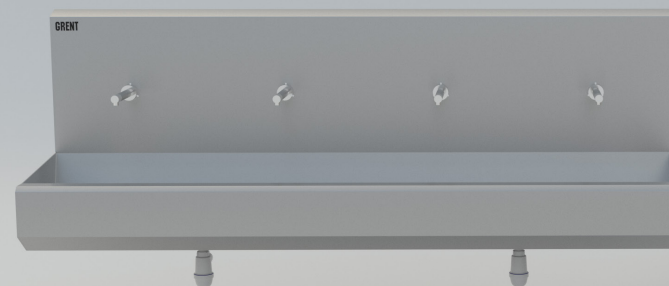
Weight, kg	51
Power consumption, kW	0,1
Mains voltage, V	220
Mains frequency, Hz	50
Length, mm	2000
Width, mm	496
Height, mm	709
Material	AISI 304



Scan and turn
 ROUND



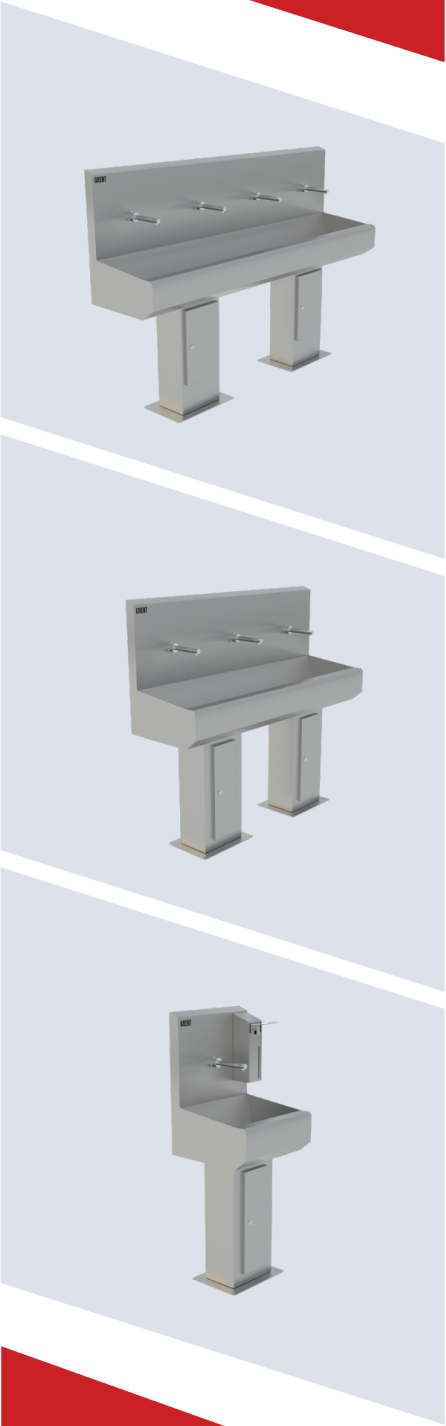
3D MODEL





Standing Wash Basins

One-section standing wash basin GRENT-S-01 88
One-section standing wash basin GRENT-S-01 with elbow dispenser 90
Two-section standing wash basin GRENT-S-02 92
Three-section standing wash basin GRENT-S-03 94
Four-section standing wash basin GRENT-S-04 96



One-section standing wash basin GRENT-S-01

Description:

One-section standing wash basin GRENT-S-01 is used for contactless hand washing of personnel mainly in enterprises of catering and food industry.

Activation of water supply is carried out by a photo sensor when you bring your hands to the mixer.

Design features:

Standard protection against dust and moisture according to IP54 classification, optional - IP65

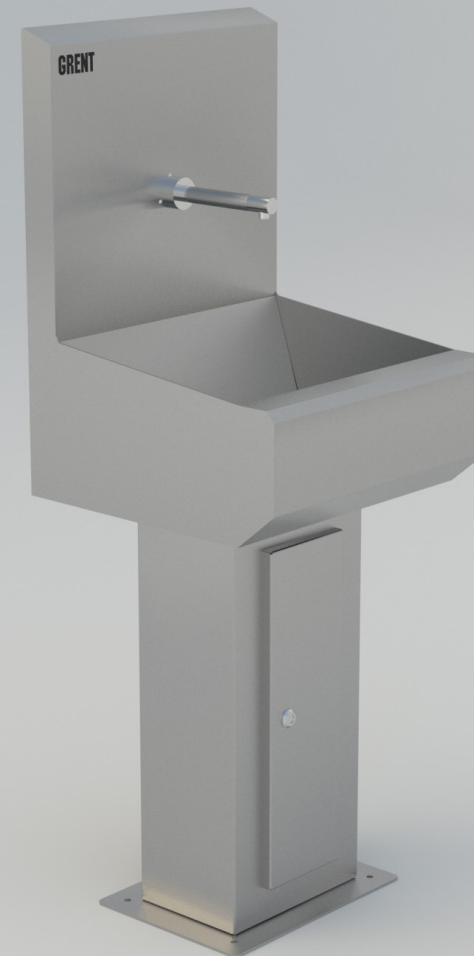
Made of stainless steel AISI 304

Glass-blasted matte surface

Equipped with mixer and siphon

Temperature and volume of water flow are adjustable

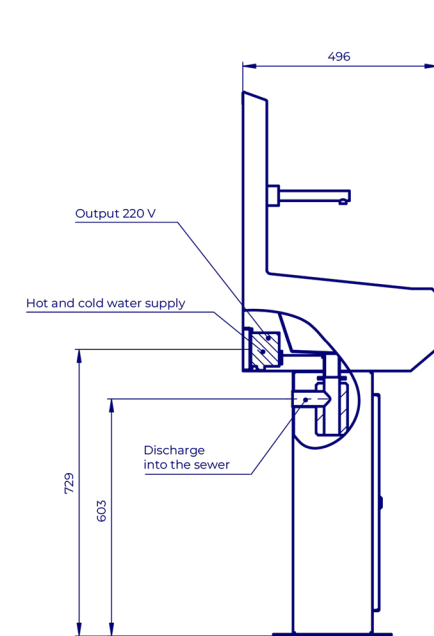
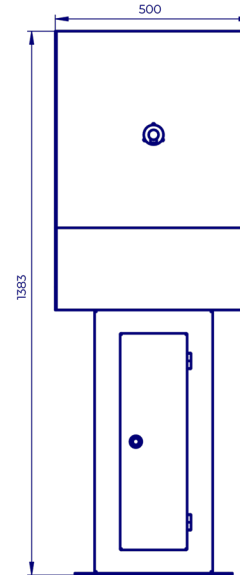
Floor-standing design, stand with door equipped with a lock



One-section standing wash basin
 GRENT-S-01
 Product ID: 1.8.2.2.01

Characteristics:

Weight, kg	31
Power consumption, kW	0,1
Mains voltage, V	220
Mains frequency, Hz	50
Length, mm	500
Width, mm	496
Height, mm	1383
Material	AISI 304

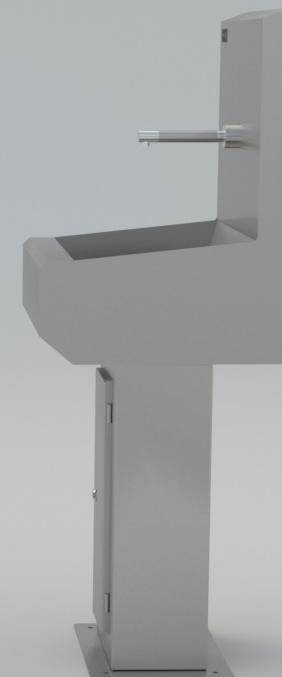
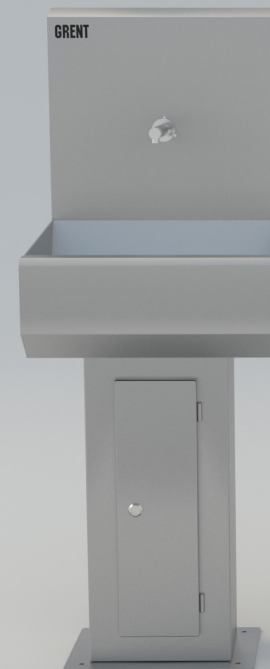


GRENT

Scan and turn
 ROUND



3D MODEL



One-section standing wash basin GRENT-S-01 with elbow dispenser

Description:

One-section standing wash basin GRENT-S-01 is used for contactless hand washing of personnel mainly in enterprises of catering and food industry.

Activation of water supply is carried out by a photo sensor when you bring your hands to the mixer.

Design features:

Standard protection against dust and moisture according to IP54 classification, optional - IP65

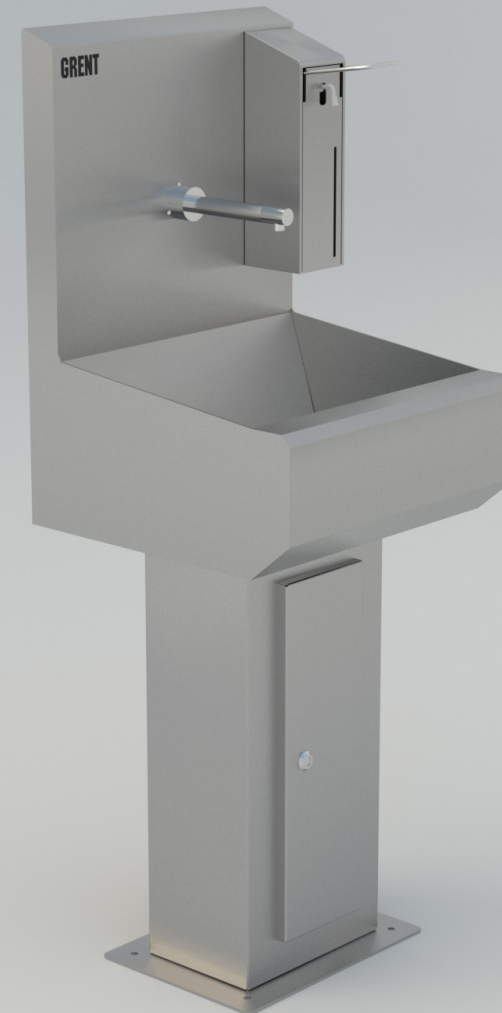
Made of stainless steel AISI 304

Glass-blasted matte surface

Equipped with mixer, siphon and elbow dispenser

Temperature and volume of water flow are adjustable

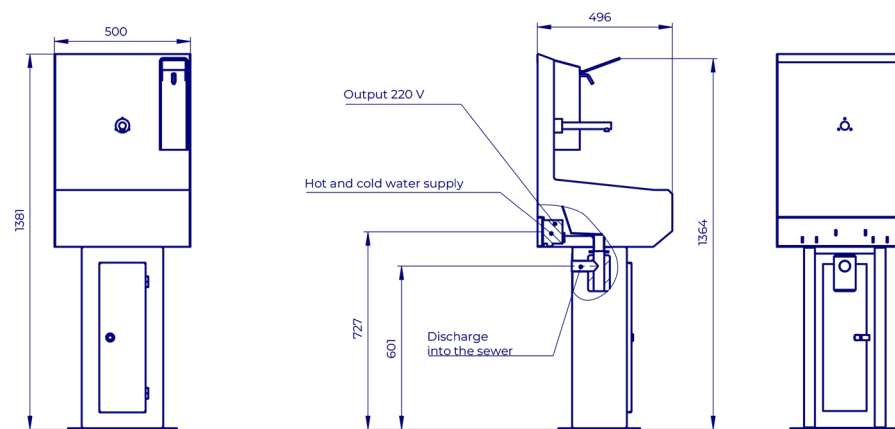
Floor-standing design, stand with door equipped with a lock



One-section standing wash basin
 GRENT-S-01 with elbow dispenser
 Product ID: 1.8.2.2.01

Characteristics:

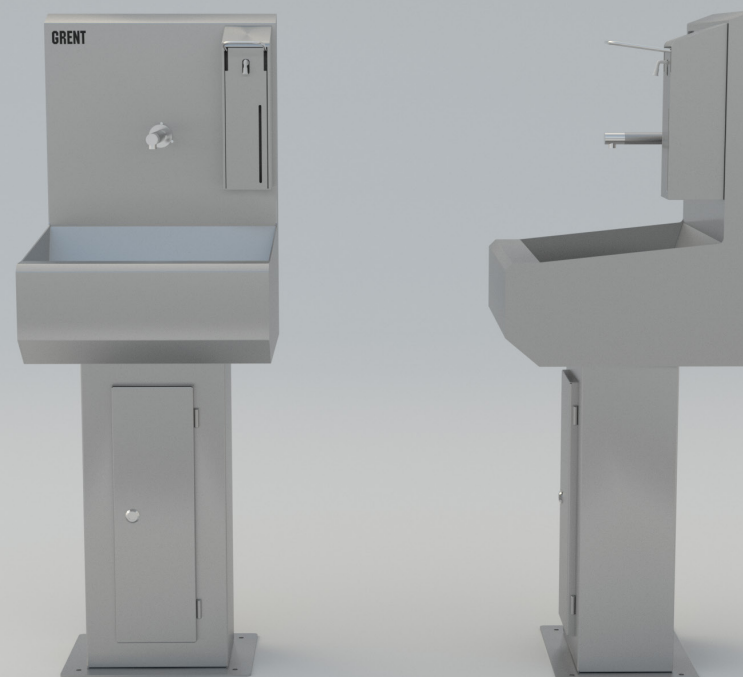
Weight, kg	31,2
Power consumption, kW	0,1
Mains voltage, V	220
Mains frequency, Hz	50
Length, mm	500
Width, mm	496
Height, mm	1383
Material	AISI 304



Scan and turn
 ROUND



3D MODEL



Two-section standing wash basin GRENT-S-02

Description:

Two-section standing wash basin GRENT-S-02 is used for contactless hand washing of personnel mainly in enterprises of catering and food industry.

Activation of water supply is carried out by a photo sensor when you bring your hands to the mixer.

Design features:

Standard protection against dust and moisture according to IP54 classification, optional - IP65

Made of stainless steel AISI 304

Glass-blasted matte surface

Equipped with mixer and siphon

Temperature and volume of water flow are adjustable

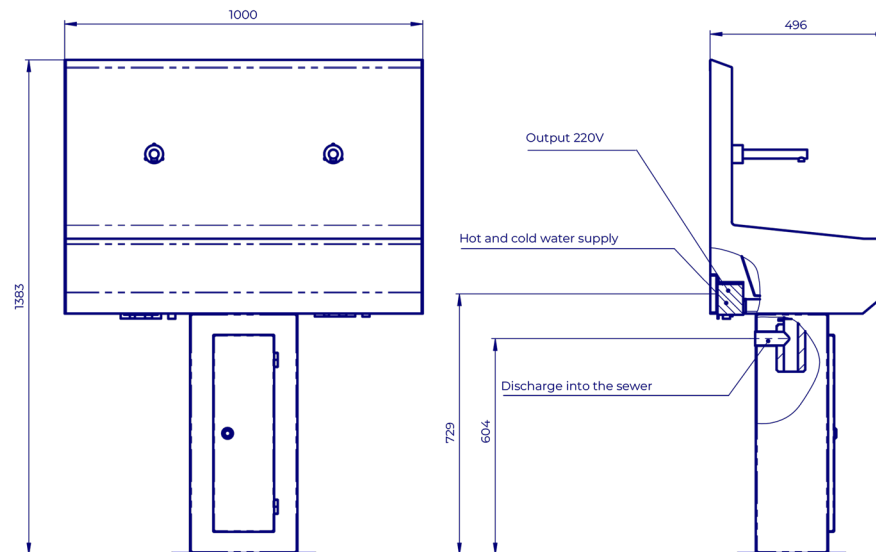
Floor-standing design, stand with door equipped with a lock



Two-section standing wash basin
 GRENT-S-02
 Product ID: 1.8.2.2.02

Characteristics:

Weight, kg	42
Power consumption, kW	0,1
Mains voltage, V	220
Mains frequency, Hz	50
Length, mm	1000
Width, mm	496
Height, mm	1383
Material	AISI 304



Scan and turn
 ROUND



3D MODEL



Three-section standing wash basin GRENT-S-03

Description:

Three-section standing wash basin GRENT-S-03 is used for contactless hand washing of personnel mainly in enterprises of catering and food industry.

Activation of water supply is carried out by a photo sensor when you bring your hands to the mixer.

Design features:

Standard protection against dust and moisture according to IP54 classification, optional - IP65

Made of stainless steel AISI 304

Glass-blasted matte surface

Equipped with mixer and siphon

Temperature and volume of water flow are adjustable

Floor-standing design, stand with door equipped with a lock



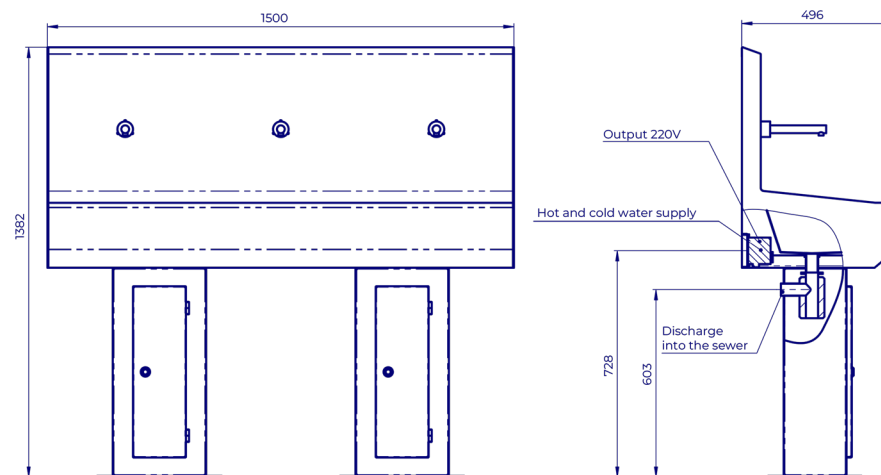
Three-section standing wash basin

GRENT-S-03

Product ID: 1.8.2.2.03

Characteristics:

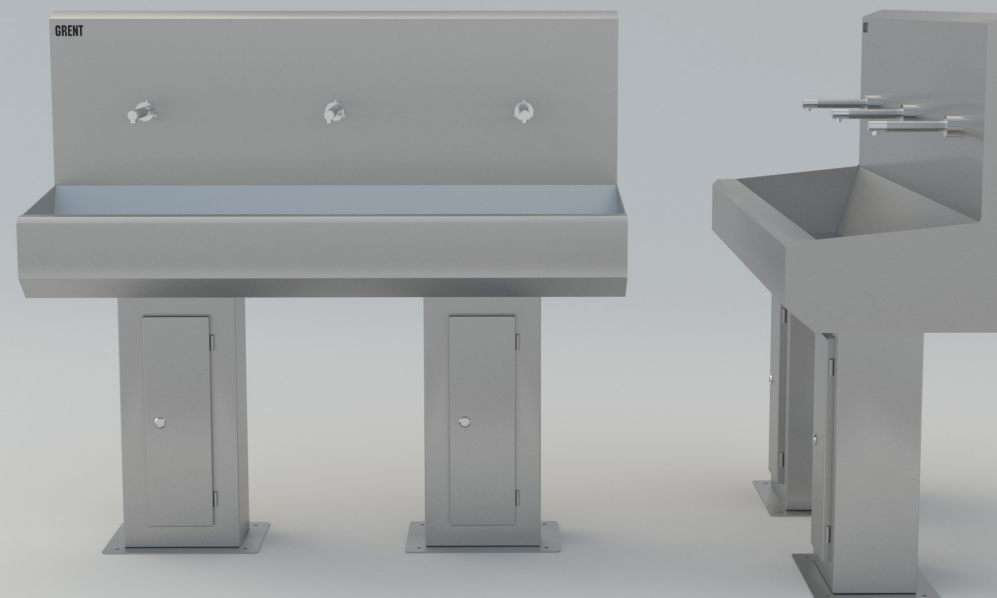
Weight, kg	67
Power consumption, kW	0,1
Mains voltage, V	220
Mains frequency, Hz	50
Length, mm	1500
Width, mm	496
Height, mm	1382
Material	AISI 304



Scan and turn
ROUND



3D MODEL



Four-section standing wash basin GRENT-S-04

Description:

Four-section standing wash basin GRENT-S-04 is used for contactless hand washing of personnel mainly in enterprises of catering and food industry.

Activation of water supply is carried out by a photo sensor when you bring your hands to the mixer.

Design features:

Standard protection against dust and moisture according to IP54 classification, optional - IP65

Made of stainless steel AISI 304

Glass-blasted matte surface

Equipped with mixer and siphon

Temperature and volume of water flow are adjustable

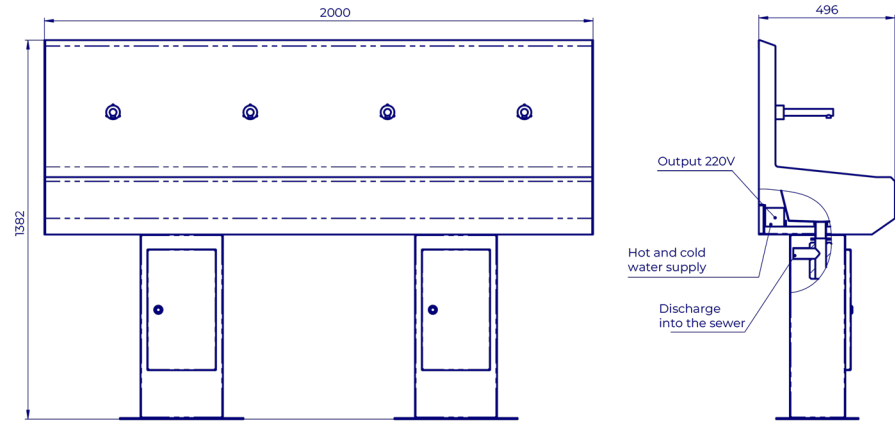
Floor-standing design, stand with door equipped with a lock



Four-section standing wash basin
GRENT-S-04
Product ID: 1.8.2.2.04

Characteristics:

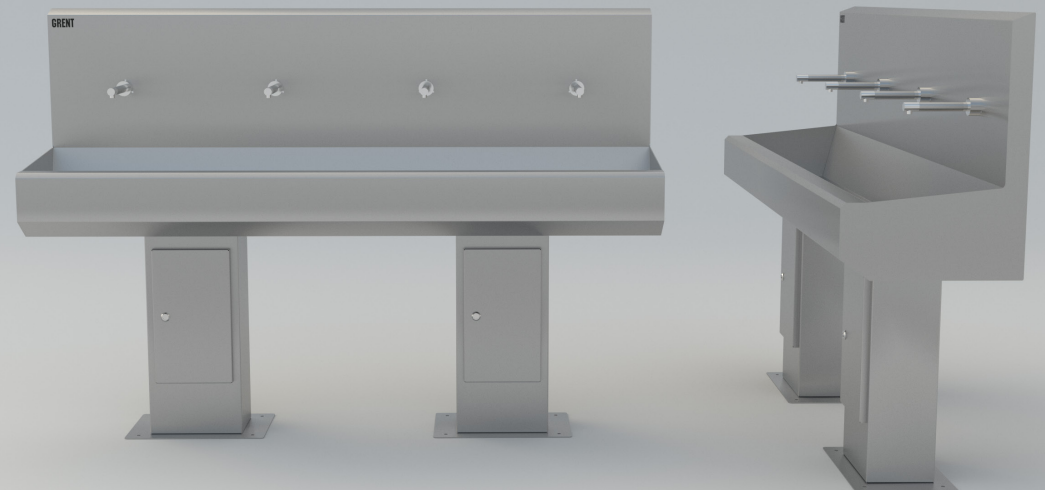
Weight, kg	78
Power consumption, kW	0,1
Mains voltage, V	220
Mains frequency, Hz	50
Length, mm	2000
Width, mm	496
Height, mm	1382
Material	AISI 304

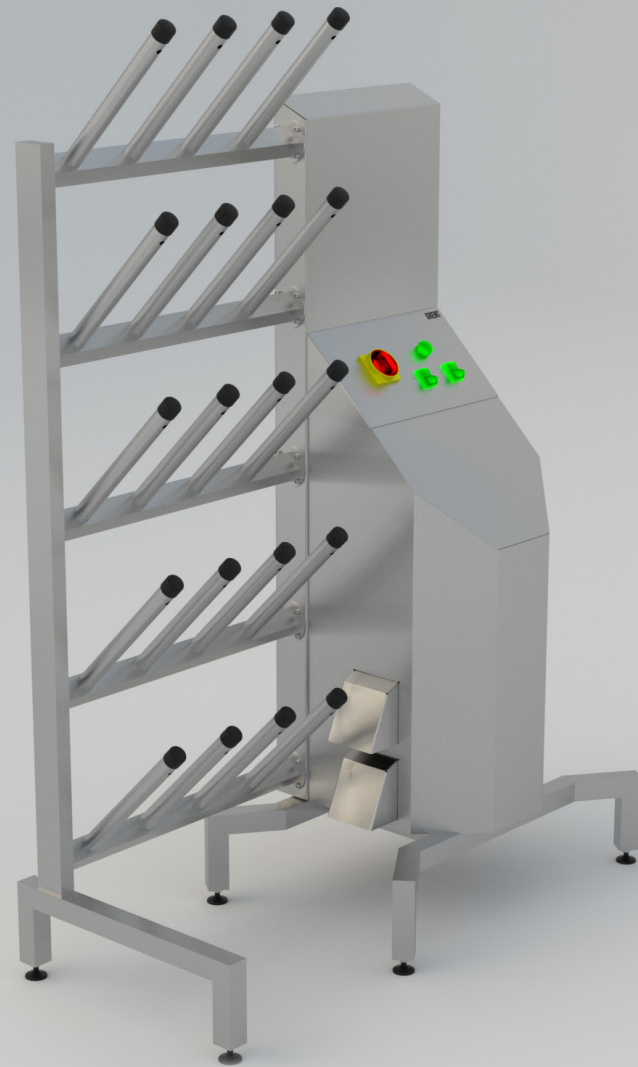


Scan and turn
ROUND



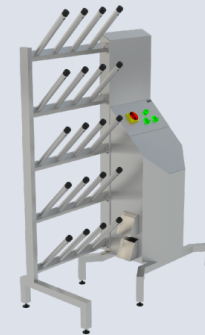
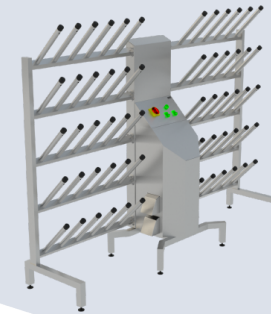
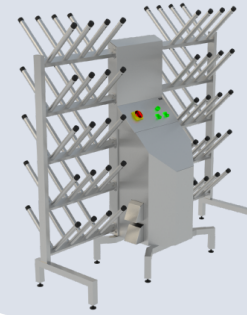
3D MODEL





Boot Dryers

Boot dryer GRENT-10-1	100
Boot dryer GRENT-20-1	102
Boot dryer GRENT-20-2	104
Boot dryer GRENT-30-1	106
Boot dryer GRENT-30-2	108
Boot dryer GRENT-40-1	110
Boot dryer GRENT-40-2	112



Boot Dryer GRENT-10-1

Description:

Bactericidal boot dryer is designed for drying, storing and disinfecting of all types of shoes.

Principle of operation:

External cold air, entering the dryer frame through a fan, is heated by an electric heater, disinfected by mixing with ozone, and supplied through round tubes directly into the boots, providing highly efficient warm air drying and disinfection through circulation from boot to toe.

Design features:

Standard protection against dust and moisture according to IP54 classification, optional - IP65

Simultaneous drying of up to 10 pairs of boots

Material - stainless steel AISI 304

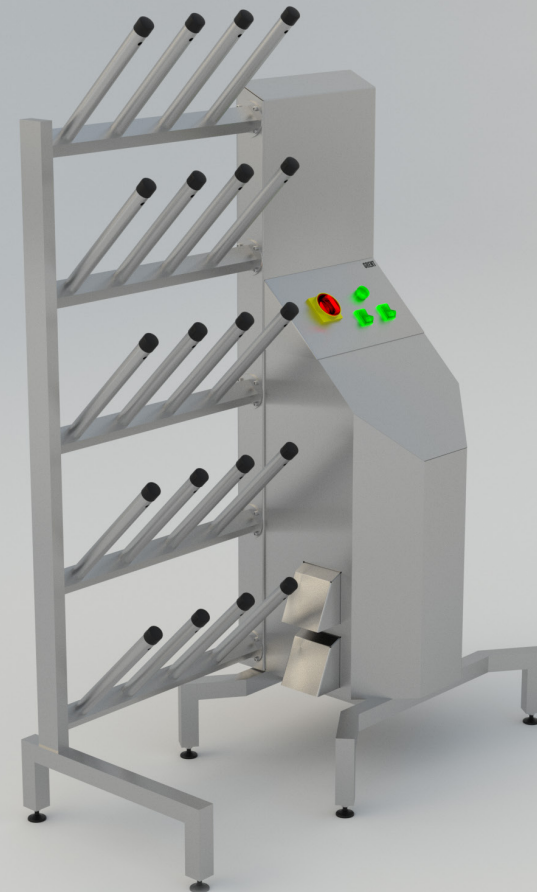
Air disinfection by ozonation

Automatic control, programming of dryer operating time

The frame has adjustable supports

The dryer is easy to maintain

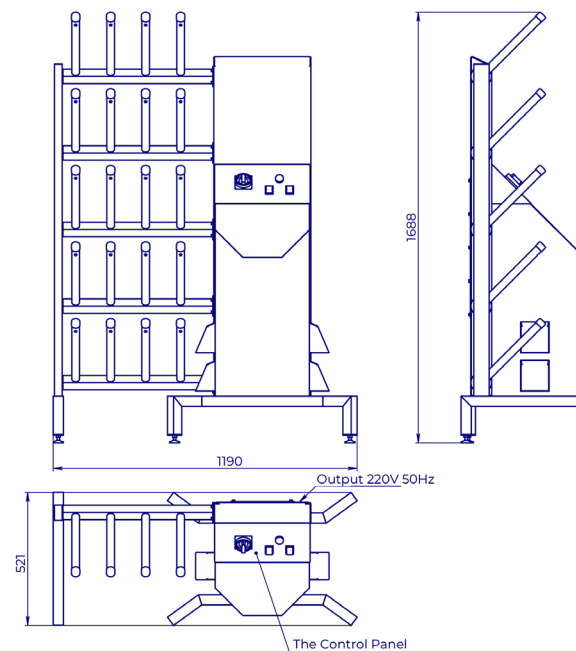
1 year factory warranty



Boot Dryer GRENT-10-1
Product ID: 1.8.3.1.10.1

Characteristics:

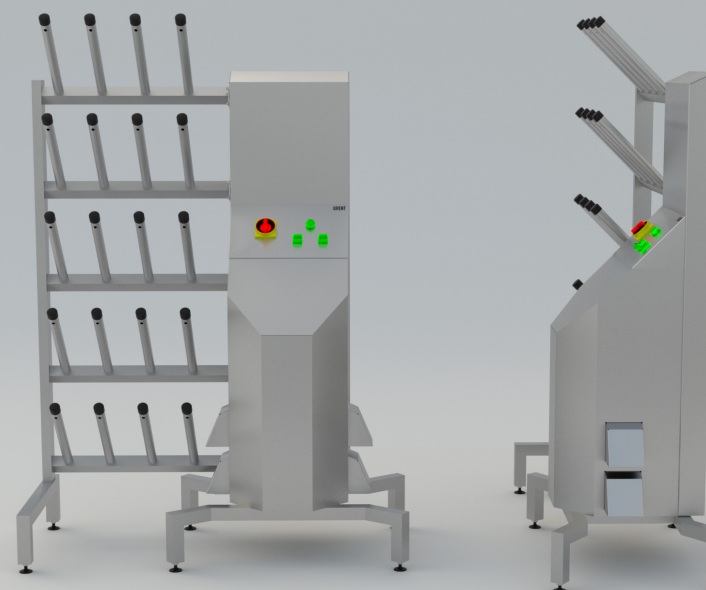
Weight, kg	75
Power consumption, kW	3,3
Mains voltage, V	220
Mains frequency, Hz	50
Length, mm	1190
Width, mm	521
Height, mm	1688
Material	AISI 304



Scan and turn
ROUND



3D MODEL



Boot Dryer GRENT-20-1

Description:

Bactericidal boot dryer is designed for drying, storing and disinfecting of all types of shoes.

Principle of operation:

External cold air, entering the dryer frame through a fan, is heated by an electric heater, disinfected by mixing with ozone, and supplied through round tubes directly into the boots, providing highly efficient warm air drying and disinfection through circulation from boot to toe.

Design features:

Standard protection against dust and moisture according to IP54 classification, optional - IP65

Simultaneous drying of up to 20 pairs of boots

Material - stainless steel AISI 304

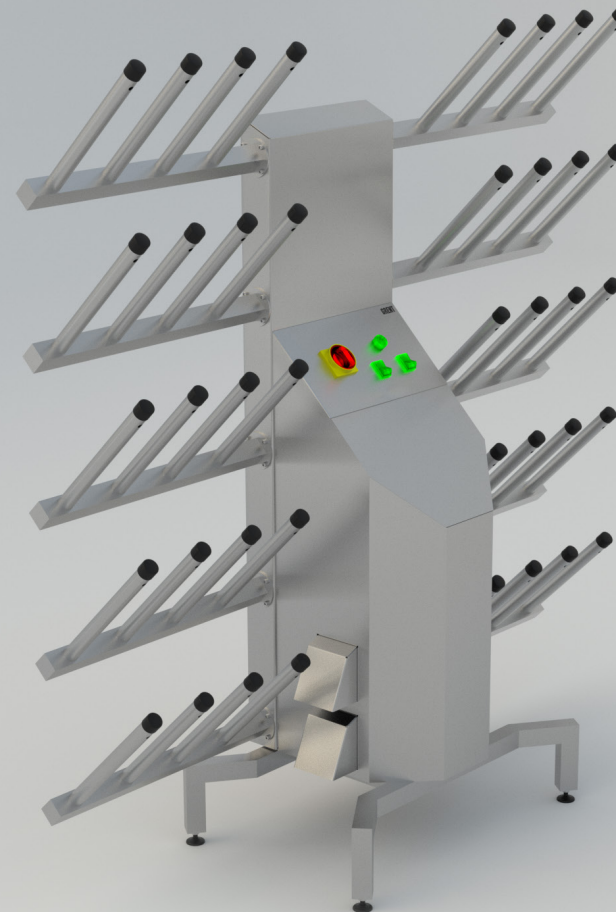
Air disinfection by ozonation

Automatic control, programming of dryer operating time

The frame has adjustable supports

The dryer is easy to maintain

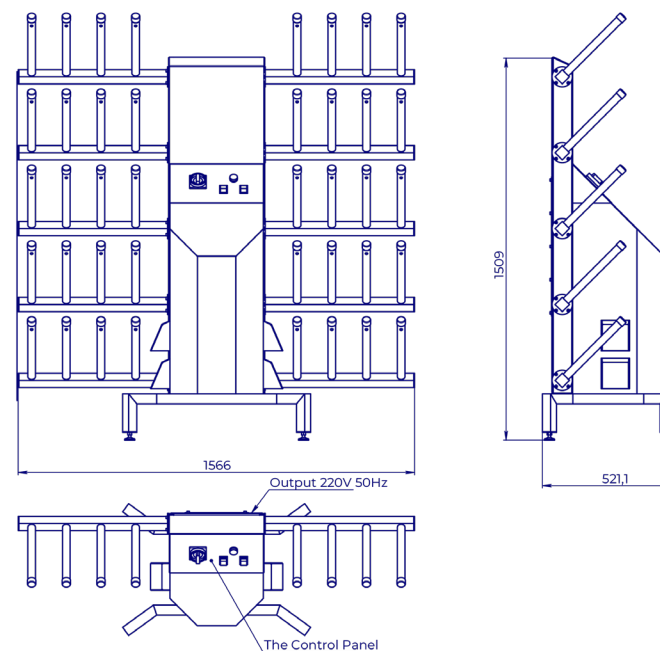
1 year factory warranty



Boot Dryer GRENT-20-1
Product ID: 1.8.31.20.1

Characteristics:

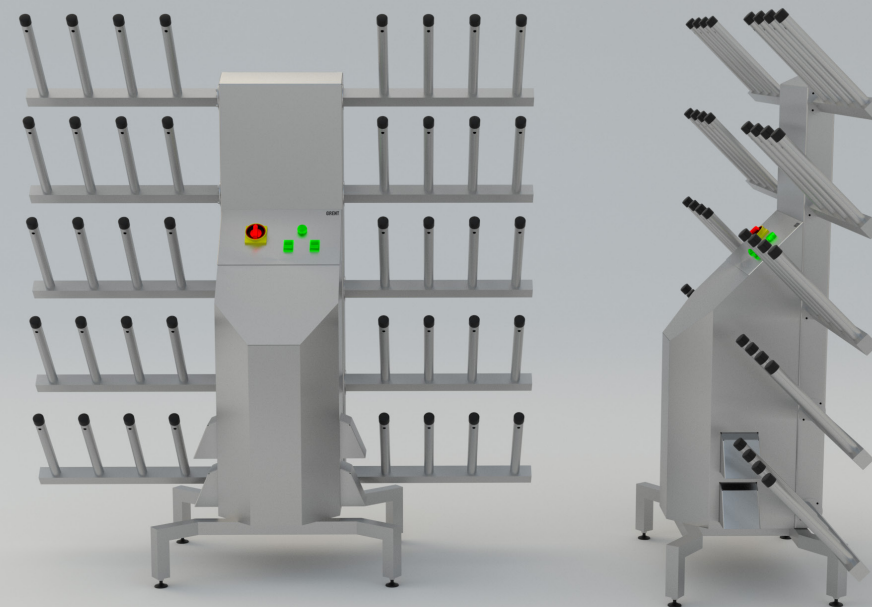
Weight, kg	80
Power consumption, kW	3,3
Mains voltage, V	220
Mains frequency, Hz	50
Length, mm	1566
Width, mm	521,1
Height, mm	1509
Material	AISI 304



Scan and turn
ROUND



3D MODEL



Boot Dryer GRENT-20-2

Description:

Bactericidal boot dryer is designed for drying, storing and disinfecting of all types of shoes.

Principle of operation:

External cold air, entering the dryer frame through a fan, is heated by an electric heater, disinfected by mixing with ozone, and supplied through round tubes directly into the boots, providing highly efficient warm air drying and disinfection through circulation from boot to toe.

Design features:

Standard protection against dust and moisture according to IP54 classification, optional - IP65

Simultaneous drying of up to 20 pairs of boots

Material - stainless steel AISI 304

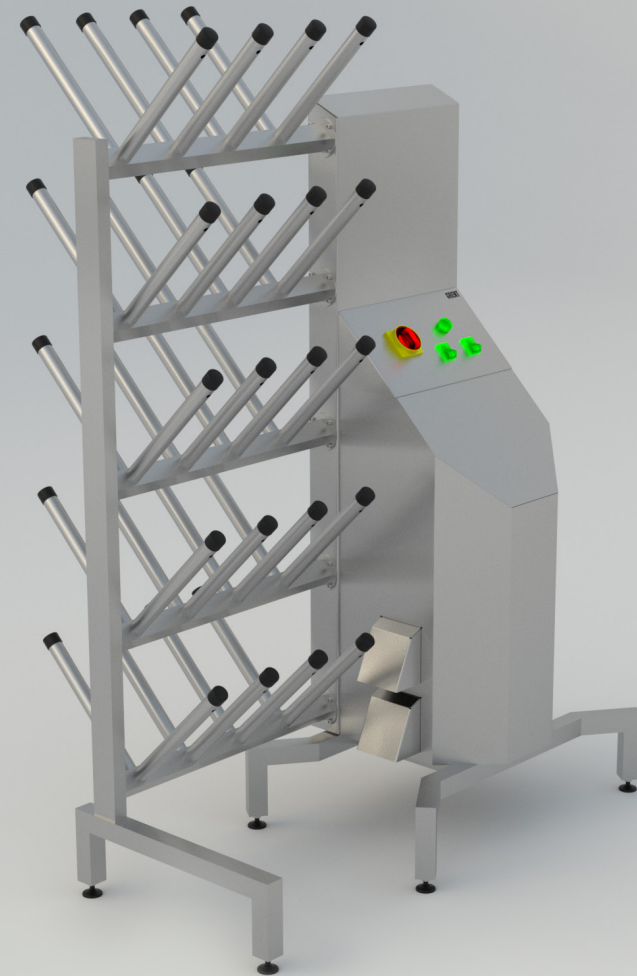
Air disinfection by ozonation

Automatic control, programming of dryer operating time

The frame has adjustable supports

The dryer is easy to maintain

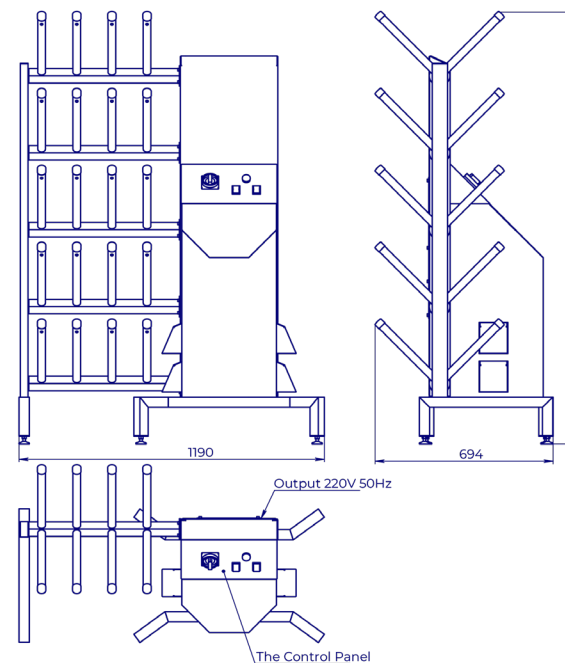
1 year factory warranty



Boot Dryer GRENT-20-2
 Product ID: 1.8.31.20.2

Characteristics:

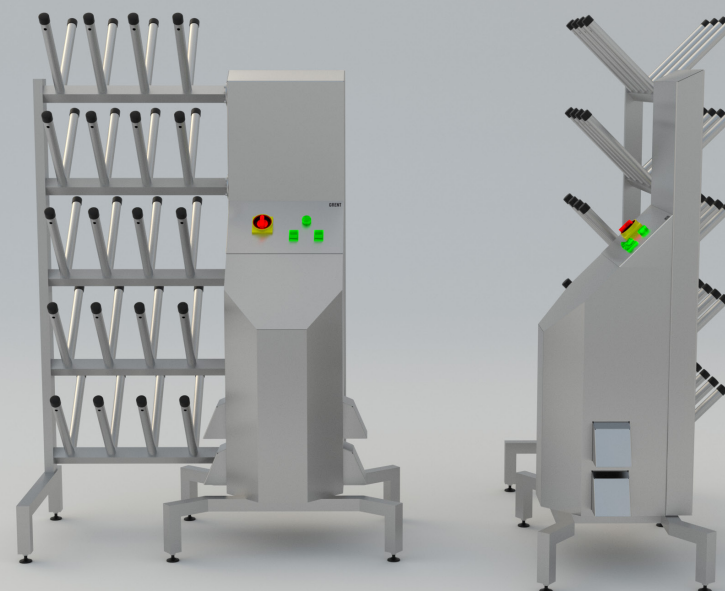
Weight, kg	80
Power consumption, kW	3,3
Mains voltage, V	220
Mains frequency, Hz	50
Length, mm	1190
Width, mm	694
Height, mm	1685
Material	AISI 304



Scan and turn
 ROUND



3D MODEL



Boot Dryer GRENT-30-1

Description:

Bactericidal boot dryer is designed for drying, storing and disinfecting of all types of shoes.

Principle of operation:

External cold air, entering the dryer frame through a fan, is heated by an electric heater, disinfected by mixing with ozone, and supplied through round tubes directly into the boots, providing highly efficient warm air drying and disinfection through circulation from boot to toe.

Design features:

Standard protection against dust and moisture according to IP54 classification, optional - IP65

Simultaneous drying of up to 30 pairs of boots

Material - stainless steel AISI 304

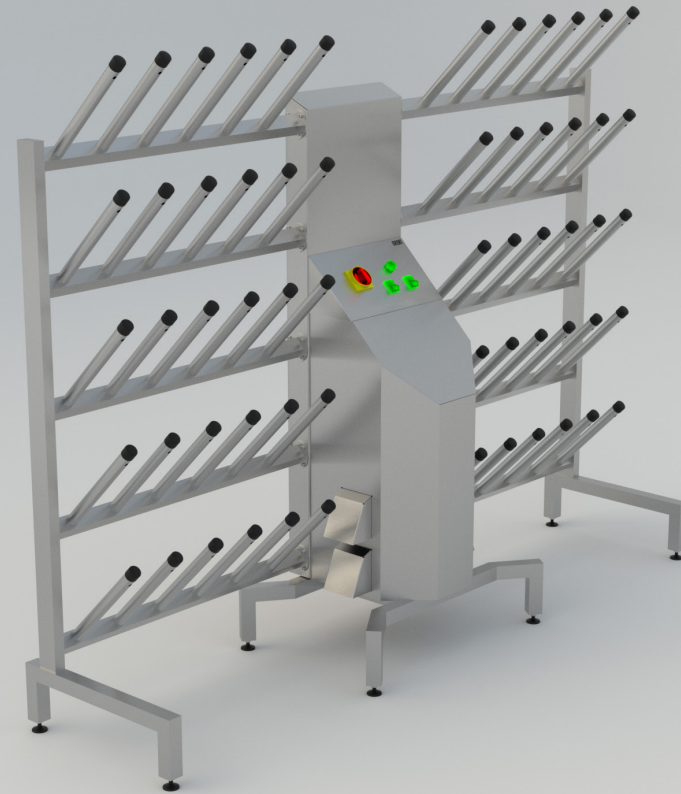
Air disinfection by ozonation

Automatic control, programming of dryer operating time

The frame has adjustable supports

The dryer is easy to maintain

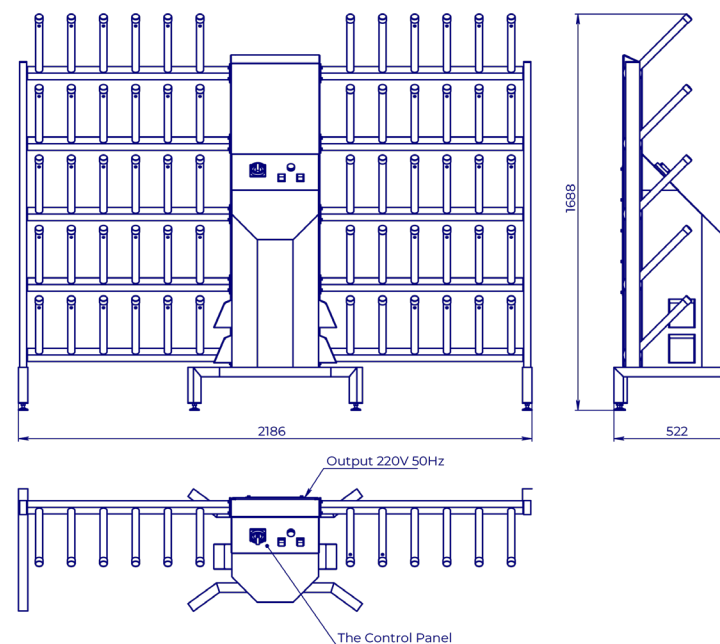
1 year factory warranty



Boot Dryer GRENT-30-1
Product ID: 1.8.31.30.1

Characteristics:

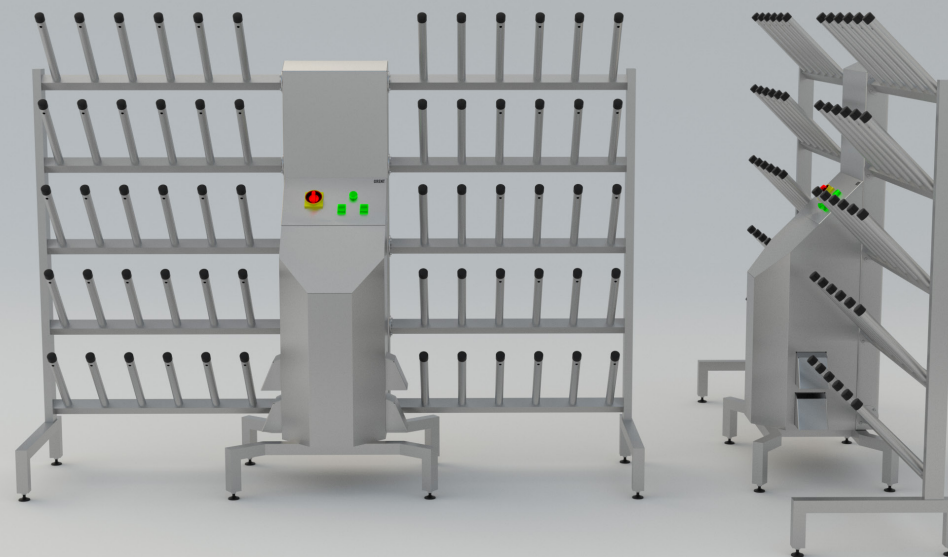
Weight, kg	100
Power consumption, kW	3,3
Mains voltage, V	220
Mains frequency, Hz	50
Length, mm	2186
Width, mm	522
Height, mm	1688
Material	AISI 304



Scan and turn
ROUND



3D MODEL



Boot Dryer GRENT-30-2

Description:

Bactericidal boot dryer is designed for drying, storing and disinfecting of all types of shoes.

Principle of operation:

External cold air, entering the dryer frame through a fan, is heated by an electric heater, disinfected by mixing with ozone, and supplied through round tubes directly into the boots, providing highly efficient warm air drying and disinfection through circulation from boot to toe.

Design features:

Standard protection against dust and moisture according to IP54 classification, optional - IP65

Simultaneous drying of up to 30 pairs of boots

Material - stainless steel AISI 304

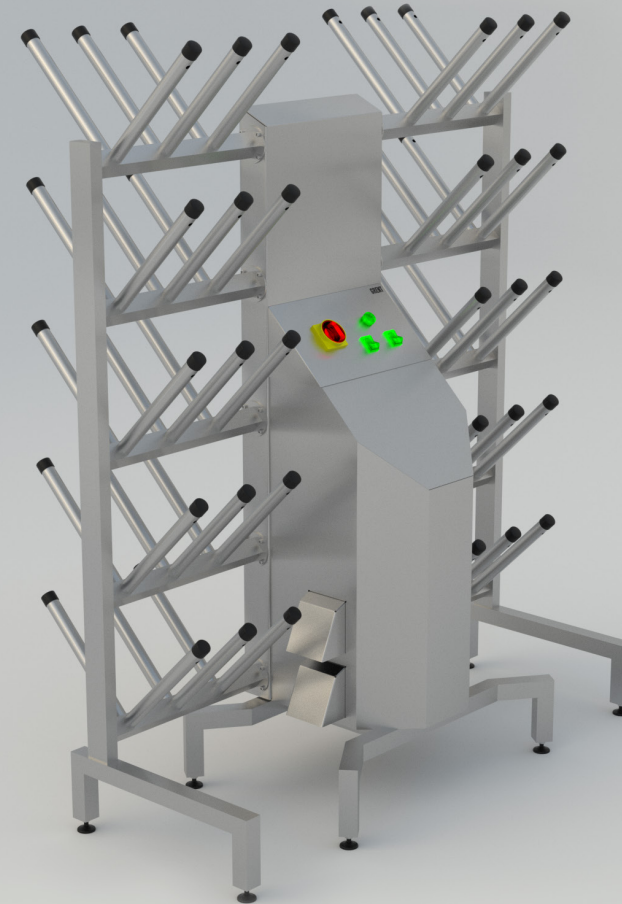
Air disinfection by ozonation

Automatic control, programming of dryer operating time

The frame has adjustable supports

The dryer is easy to maintain

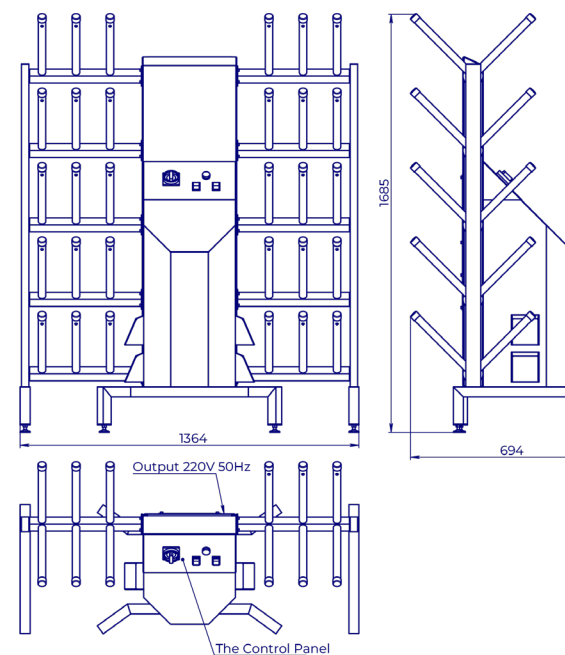
1 year factory warranty



Boot Dryer GRENT-30-2
Product ID: 1.8.31.30.2

Characteristics:

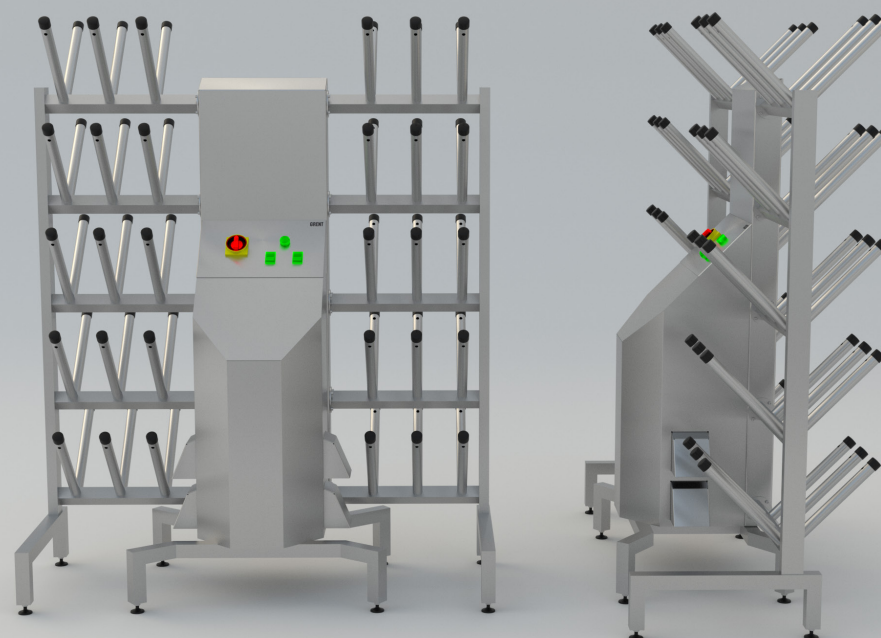
Weight, kg	94
Power consumption, kW	3,3
Mains voltage, V	220
Mains frequency, Hz	50
Length, mm	1364
Width, mm	694
Height, mm	1685
Material	AISI 304



Scan and turn
ROUND



3D MODEL



Boot Dryer GRENT-40-1

Description:

Bactericidal boot dryer is designed for drying, storing and disinfecting of all types of shoes.

Principle of operation:

External cold air, entering the dryer frame through a fan, is heated by an electric heater, disinfected by mixing with ozone, and supplied through round tubes directly into the boots, providing highly efficient warm air drying and disinfection through circulation from boot to toe.

Design features:

Standard protection against dust and moisture according to IP54 classification, optional - IP65

Simultaneous drying of up to 40 pairs of boots

Material - stainless steel AISI 304

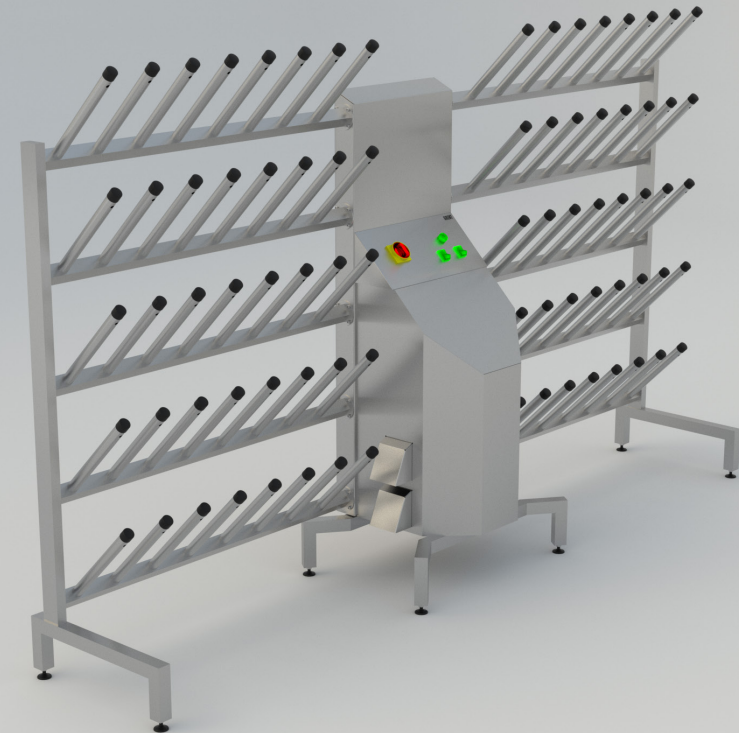
Air disinfection by ozonation

Automatic control, programming of dryer operating time

The frame has adjustable supports

The dryer is easy to maintain

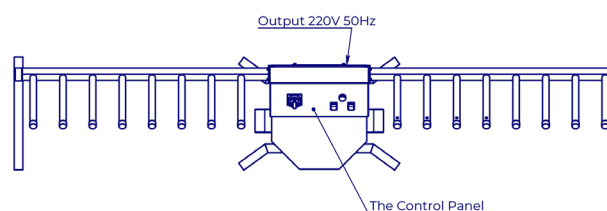
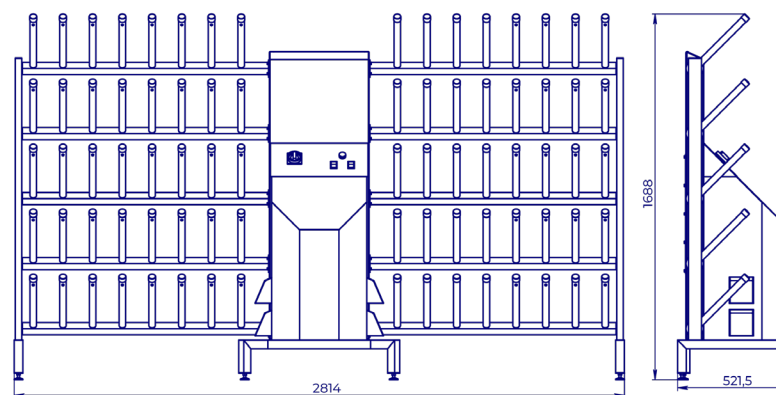
1 year factory warranty



Boot Dryer GRENT-40-1
Product ID: 1.8.3.1.40.1

Characteristics:

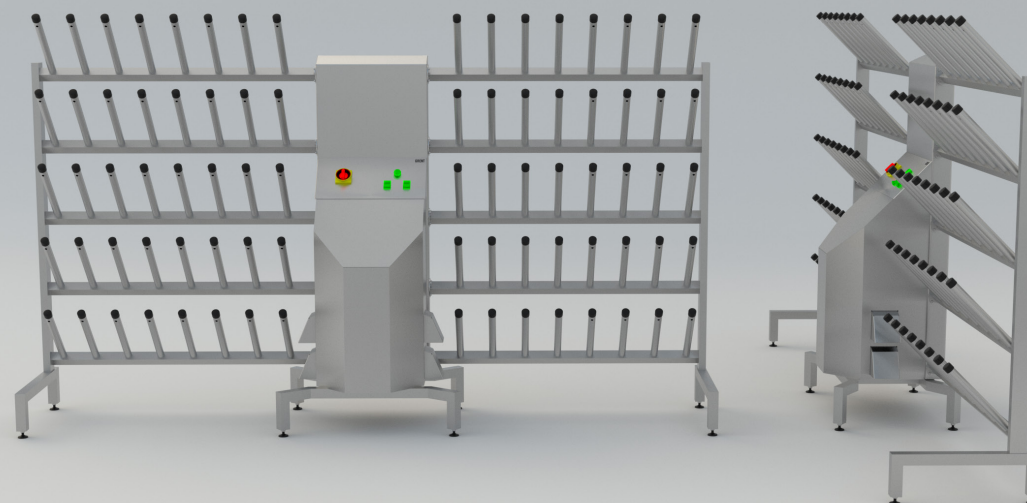
Weight, kg	115
Power consumption, kW	3,3
Mains voltage, V	220
Mains frequency, Hz	50
Length, mm	2814
Width, mm	521,5
Height, mm	1688
Material	AISI 304



Scan and turn
ROUND



3D MODEL



Boot Dryer GRENT-40-2

Description:

Bactericidal boot dryer is designed for drying, storing and disinfecting of all types of shoes.

Principle of operation:

External cold air, entering the dryer frame through a fan, is heated by an electric heater, disinfected by mixing with ozone, and supplied through round tubes directly into the boots, providing highly efficient warm air drying and disinfection through circulation from boot to toe.

Design features:

Standard protection against dust and moisture according to IP54 classification, optional - IP65

Simultaneous drying of up to 40 pairs of boots

Material - stainless steel AISI 304

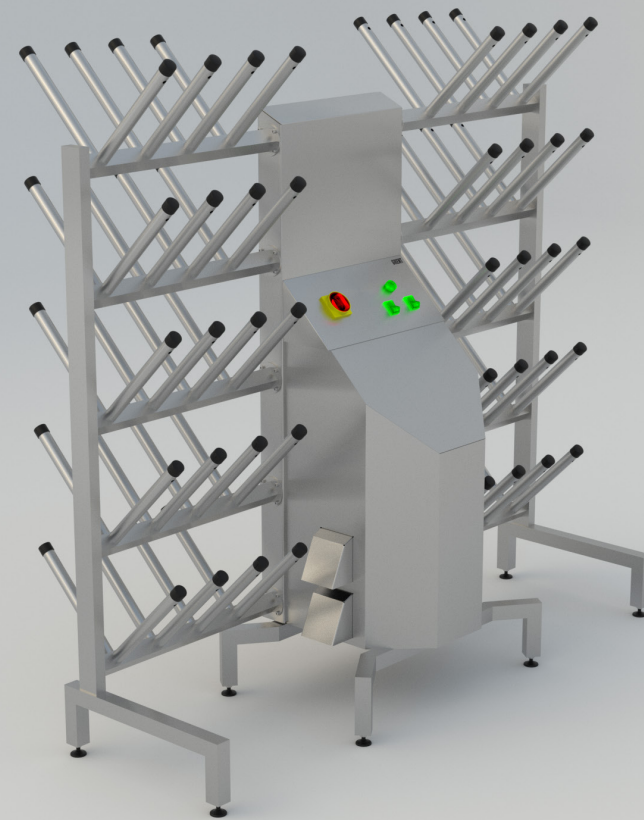
Air disinfection by ozonation

Automatic control, programming of dryer operating time

The frame has adjustable supports

The dryer is easy to maintain

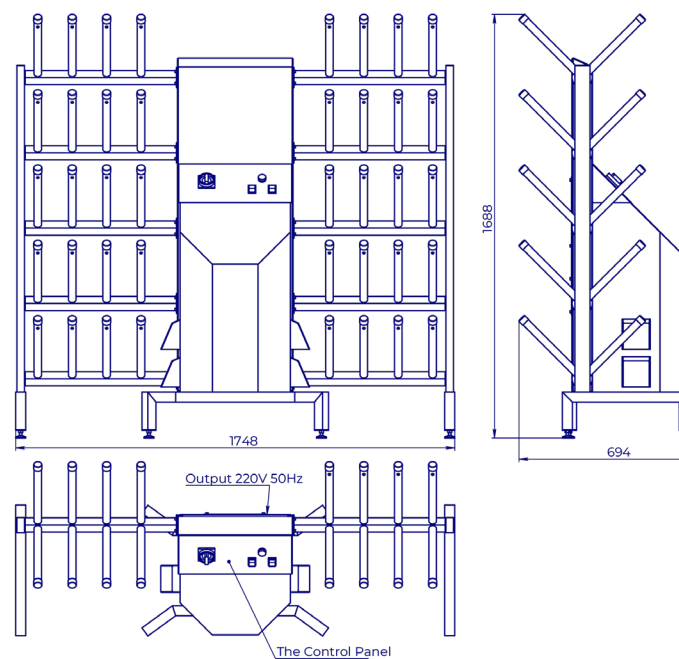
1 year factory warranty



Boot Dryer GRENT-40-2
Product ID: 1.8.31.40.2

Characteristics:

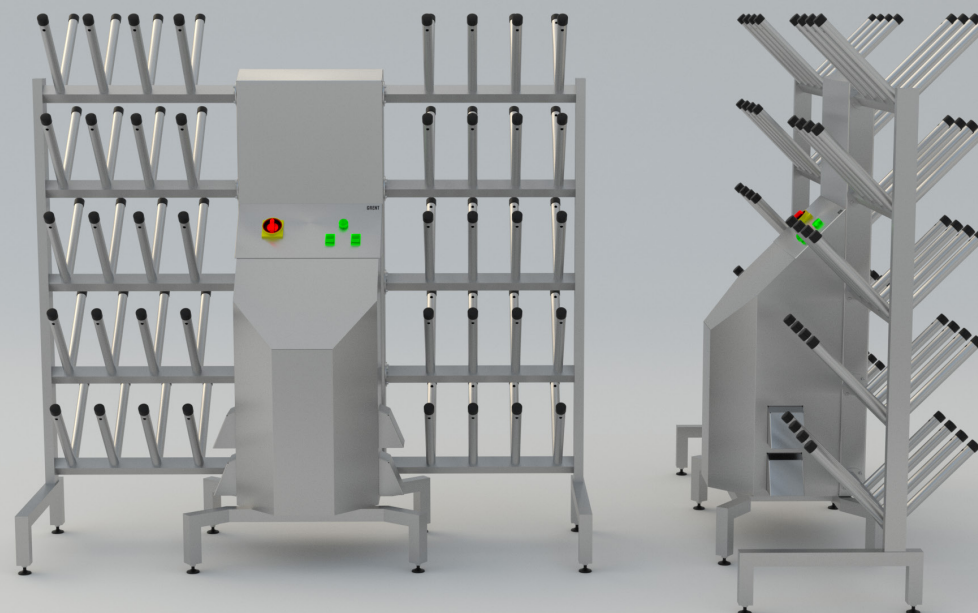
Weight, kg	108
Power consumption, kW	3,3
Mains voltage, V	220
Mains frequency, Hz	50
Length, mm	1748
Width, mm	694
Height, mm	1688
Material	AISI 304



Scan and turn
ROUND



3D MODEL



Plant address: Russian Federation, Tula, Nikolay Ostrovsky str., 76

8 (800) 444-14-98
INFO@GRENT.RU
WWW.GRENT.RU



GRENT.RU